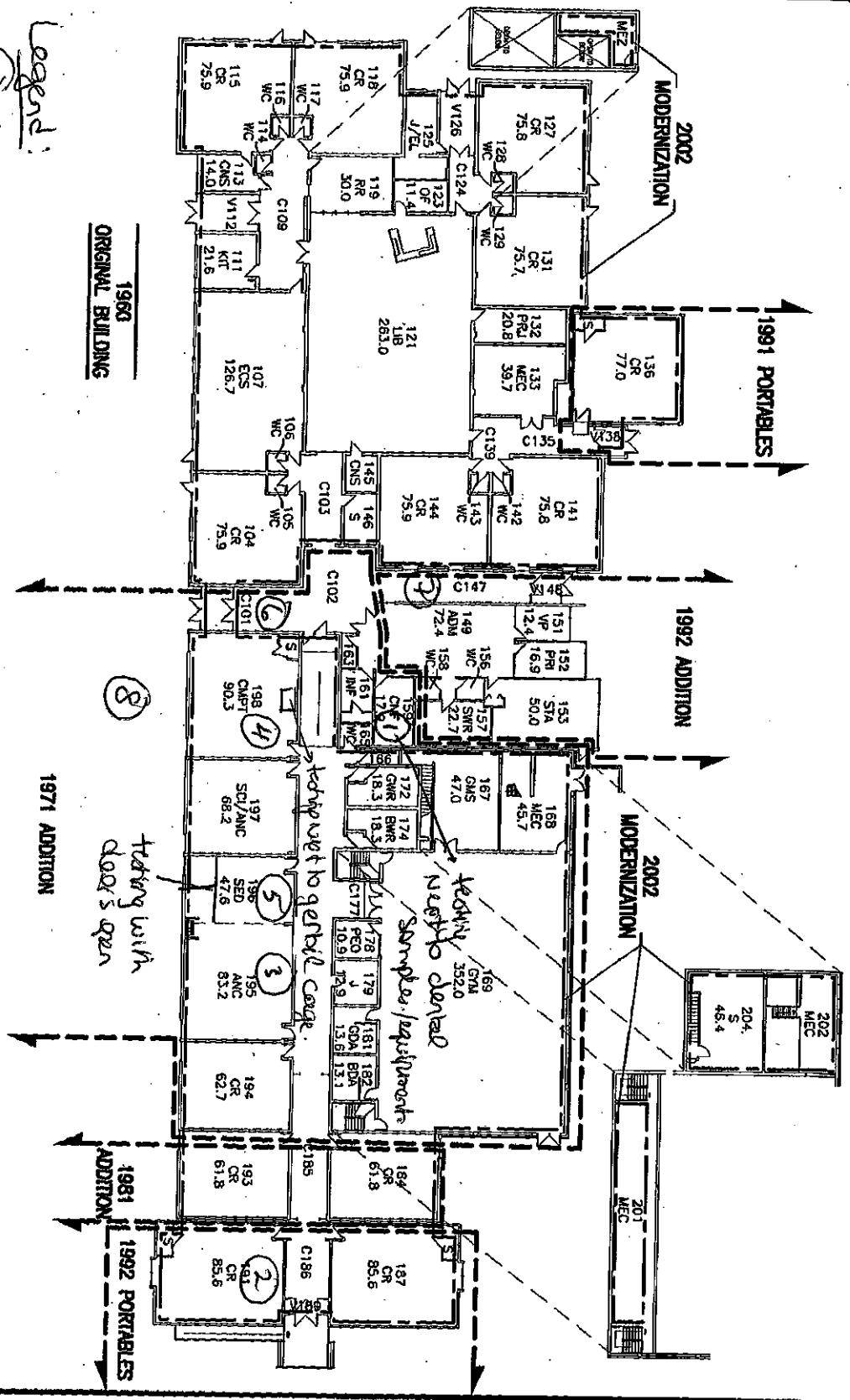


Legend:
 # Location of Inside Air Tests



WILD ROSE SCHOOL DIVISION #66	
LOCHEARN ELEMENTARY	
5416 54 STREET, ROCKY MTN HOUSE, ALBERTA	
DATE: DEC 2003	OWNER: WILD
SCALE: 1:500	PROJECT: FLOOR PLAN
PLT: D-00282A	CODE: 4107
SHEET: 2/3	





RH
Services Inc.

8124-97th Avenue, NW
Edmonton, Alberta.
T6C 2B7
Tel: 780-440-4880
Fax: 780-440-4890
E-Mail: rod@rhservices.ca

Field Office
7340-82 Avenue,
Edmonton, AB.

Viable Mould Count Analysis

Alberta infrastructure
3rd Floor, 6950-113 Street, NW.
Edmonton, Alberta
T6H 5V7
Attn: Andrew Brooks

Job # 8700
Date: December 1st, 2014
Ref:

**Rocky Mountain House
Lochean School**

(Samples collected by client)

Page 1 of 2

Sample number	Location of sample	Time	Volume Litres	Genus	Raw Count	CFU/M ³
08	Exterior control	Nov. 21 st , 2014 11:09-11:13	160	<i>Alternaria</i> <i>Cladosporium</i> <i>Penicillium</i> Yeast (<i>Rhodotorula</i>) Non Sporulating Hyphae Total	1 9 1 2 1 14	6 56 6 13 6 87
01	Room 159	Nov. 21 st , 2014 10:15-10:19	160	Non Sporulating Hyphae Total	1 1	6 6
02	Room 191	Nov.21 st 2014 10:23-10:27	160	<i>Cladosporium</i> Total	1 1	6 6
03	Room 195	Nov. 21 st , 2014 10:30-10:34	160	<i>Alternaria</i> Non Sporulating Hyphae Total	1 1 2	6 6 12

Sample number	Location of sample	Time	Volume Litres	Genus	Raw Count	CFU/M ³
04	Room 198	Nov.21 st , 2014 10:40-10:44	160	<i>Cladosporium</i> <i>Penicillium</i> Total	3 1 4	19 6 25
05	Room 196	Nov. 21 st , 2014 10:48-10:52	160	<i>Cladosporium</i> Yeast (<i>Rhodotorula</i>) Total	2 1 3	13 6 19
06	Front Entrance (pictures)	Nov. 21 st , 2014 10:56-11:00	160	NG Total	- -	- -
07	Corridor by Main Office (by K-3 Bookshelf)	Nov 21 st , 2014 11:03-11:07	160	NG Total	- -	- -

NOTES:

Media will be kept for 10 days only.
Collection Media: Rose Bengal Agar in RCS sample
Sterile Hyphae: Means filamentous mould growth without conidia or fruiting bodies, therefore not identifiable.

Sample Interpretation:

- Red highlight indicates concentrations in excess of Health Canada Guidelines
 - Blue highlight indicates concentrations of interest
 - Green highlight indicate exterior samples
- NG: means no mould growth after incubation period

Analysis by:

Rod Hall RET. CRSP. ROHT