

Sample Format for Combined 3-Year Education Plan and Annual Education Results Report (AERR) for Public/Separate/Francophone Schools

Each school authority establishes requirements for the content and process for school education plans and annual reports as part of its accountability system. Schools should prepare their education plans and annual reports based on specifications provided by their school authority. For details please refer to the *Policy and Requirements for Planning and Results Reporting*: <http://www.education.alberta.ca/admin/resources/planning/reporting2014.aspx>.

This template is provided to assist in the preparation of their plans and reports. Schools may use, modify or extract elements from this template as required.

Please note that this template is not designed to address the requirements for Charter Schools and Accredited Private Schools. These schools should refer to the Sample Format for Combined 3-Year Education Plan and Annual Education Results Report (AERR) for Charter School and Accredited Private School Authorities.

Combined 2014 Accountability Pillar Overall Summary

Measure Category	Measure Category Evaluation	Measure	Evergreen Elementary School			Alberta			Measure Evaluation		
			Current Result	Prev Year Result	Prev 3 Year Average	Current Result	Prev Year Result	Prev 3 Year Average	Achievement	Improvement	Overall
Safe and Caring Schools	Excellent	Safe and Caring	89.1	83.6	83.4	89.1	89.0	88.6	Very High	Improved	Excellent
Student Learning Opportunities	n/a	Program of Studies	74.2	73.7	74.5	81.3	81.5	81.1	Intermediate	Maintained	Acceptable
		Education Quality	90.9	95.2	93.1	89.2	89.8	89.5	Very High	Maintained	Excellent
		Drop Out Rate	n/a	n/a	n/a	3.3	3.5	3.6	n/a	n/a	n/a
		High School Completion Rate (3 yr)	n/a	n/a	n/a	74.9	74.8	73.8	n/a	n/a	n/a
Student Learning Achievement (Grades K-9)	Issue	PAT: Acceptable	81.3	67.9	76.3	74.0	75.3	75.5	Intermediate	Maintained	Acceptable
		PAT: Excellence	8.0	7.4	14.8	19.0	19.1	19.6	Very Low	Declined	Concern
Student Learning Achievement (Grades 10-12)	n/a	Diploma: Acceptable	n/a	n/a	n/a	85.4	84.2	83.4	n/a	n/a	n/a
		Diploma: Excellence	n/a	n/a	n/a	21.0	19.5	19.1	n/a	n/a	n/a
		Diploma Exam Participation Rate (4+ Exams)	n/a	n/a	n/a	50.5	56.6	55.9	n/a	n/a	n/a
		Rutherford Scholarship Eligibility Rate (Revised)	n/a	n/a	n/a	60.9	61.3	60.8	n/a	n/a	n/a
Preparation for Lifelong Learning, World of Work, Citizenship	n/a	Transition Rate (6 yr)	n/a	n/a	n/a	59.2	59.5	59.1	n/a	n/a	n/a
		Work Preparation	87.5	76.2	81.4	81.2	80.3	80.0	Very High	Maintained	Excellent
		Citizenship	84.7	82.5	78.8	83.4	83.4	82.6	Very High	Improved	Excellent
Parental Involvement	Excellent	Parental Involvement	91.3	85.4	85.2	80.6	80.3	80.0	Very High	Maintained	Excellent
Continuous Improvement	Acceptable	School Improvement	77.7	87.6	87.6	79.8	80.6	80.2	High	Declined	Acceptable

Notes:

1. Aggregated PAT results are based upon a weighted average of percent meeting standards (Acceptable, Excellence). The weights are the number of students enrolled in each course. Courses included: English Language Arts (Grades 6, 9, 9 KAE), Français (Grades 6, 9), French Language Arts (Grades 6, 9), Mathematics 9 KAE, Science (Grades 6, 9, 9 KAE), Social Studies (Grades 6, 9, 9 KAE). Grade 3 results were not included due to the introduction of the Student Learning Assessment Pilot.
2. Aggregated Diploma results are a weighted average of percent meeting standards (Acceptable, Excellence) on Diploma Examinations. The weights are the number of students writing the Diploma Examination for each course. Courses included: English Language Arts 30-1, English Language Arts 30-2, French Language Arts 30-1, Français 30-1, Chemistry 30, Physics 30, Biology 30, Science 30, Social Studies 30-1, Social Studies 30-2.
3. The subsequent pages include evaluations for each performance measure. If jurisdictions desire not to present this information for each performance measure in the subsequent pages, please include a reference to this overall summary page for each performance measure.
4. Data values have been suppressed where the number of students or respondents is less than 6. Suppression is marked with an asterisk (*).
5. Please note that participation in Diploma Examinations and Grade 9 Provincial Achievement Tests was impacted by the flooding in June 2013. Caution should be used when interpreting trends over time for the province and those school authorities affected by the floods.
6. Survey results for the province and some school authorities were impacted by an increase in the number of students responding to the survey through the introduction of the Tell THEM From ME survey tool in 2014.

Measure Evaluation Reference

Achievement Evaluation

Achievement evaluation is based upon a comparison of Current Year data to a set of standards which remain consistent over time. The Standards are calculated by taking the 3 year average of baseline data for each measure across all school jurisdictions and calculating the 5th, 25th, 75th and 95th percentiles. Once calculated, these standards remain in place from year to year to allow for consistent planning and evaluation.

The table below shows the range of values defining the 5 achievement evaluation levels for each measure.

Measure	Very Low	Low	Intermediate	High	Very High
Safe and Caring	0.00 - 77.62	77.62 - 81.05	81.05 - 84.50	84.50 - 88.03	88.03 - 100.00
Program of Studies	0.00 - 66.31	66.31 - 72.65	72.65 - 78.43	78.43 - 81.59	81.59 - 100.00
Education Quality	0.00 - 80.94	80.94 - 84.23	84.23 - 87.23	87.23 - 89.60	89.60 - 100.00
Drop Out Rate	100.00 - 9.40	9.40 - 6.90	6.90 - 4.27	4.27 - 2.79	2.79 - 0.00
High School Completion Rate (3 yr)	0.00 - 57.03	57.03 - 62.36	62.36 - 73.88	73.88 - 81.79	81.79 - 100.00
PAT: Acceptable	0.00 - 66.22	66.22 - 72.00	72.00 - 81.95	81.95 - 85.72	85.72 - 100.00
PAT: Excellence	0.00 - 10.93	10.93 - 14.38	14.38 - 20.26	20.26 - 26.17	26.17 - 100.00
Diploma: Acceptable	0.00 - 72.08	72.08 - 78.77	78.77 - 85.43	85.43 - 89.96	89.96 - 100.00
Diploma: Excellence	0.00 - 7.77	7.77 - 11.90	11.90 - 18.63	18.63 - 22.99	22.99 - 100.00
Diploma Exam Participation Rate (4+ Exams)	0.00 - 31.10	31.10 - 44.11	44.11 - 55.78	55.78 - 65.99	65.99 - 100.00
Rutherford Scholarship Eligibility Rate (Revised)	0.00 - 43.18	43.18 - 49.83	49.83 - 59.41	59.41 - 70.55	70.55 - 100.00
Transition Rate (6 yr)	0.00 - 39.80	39.80 - 46.94	46.94 - 56.15	56.15 - 68.34	68.34 - 100.00
Work Preparation	0.00 - 66.92	66.92 - 72.78	72.78 - 77.78	77.78 - 86.13	86.13 - 100.00
Citizenship	0.00 - 66.30	66.30 - 71.63	71.63 - 77.50	77.50 - 81.08	81.08 - 100.00
Parental Involvement	0.00 - 70.76	70.76 - 74.58	74.58 - 78.50	78.50 - 82.30	82.30 - 100.00
School Improvement	0.00 - 65.25	65.25 - 70.85	70.85 - 76.28	76.28 - 80.41	80.41 - 100.00

Notes:

- 1) For all measures except Drop Out Rate: The range of values at each evaluation level is interpreted as greater than or equal to the lower value, and less than the higher value. For the Very High evaluation level, values range from greater than or equal to the lower value to 100%.
- 2) Drop Out Rate measure: As "Drop Out Rate" is inverse to most measures (i.e. lower values are "better"), the range of values at each evaluation level is interpreted as greater than the lower value and less than or equal to the higher value. For the Very High evaluation level, values range from 0% to less than or equal to the higher value.

Improvement Table

For each jurisdiction, improvement evaluation consists of comparing the Current Year result for each measure with the previous three-year average. A chi-square statistical test is used to determine the significance of the improvement. This test takes into account the size of the jurisdiction in the calculation to make improvement evaluation fair across jurisdictions of different sizes.

The table below shows the definition of the 5 improvement evaluation levels based upon the chi-square result.

Evaluation Category	Chi-Square Range
Declined Significantly	3.84 + (current < previous 3-year average)
Declined	1.00 - 3.83 (current < previous 3-year average)
Maintained	less than 1.00
Improved	1.00 - 3.83 (current > previous 3-year average)
Improved Significantly	3.84 + (current > previous 3-year average)

Overall Evaluation Table

The overall evaluation combines the Achievement Evaluation and the Improvement Evaluation. The table below illustrates how the Achievement and Improvement evaluations are combined to get the overall evaluation.

Improvement	Achievement				
	Very High	High	Intermediate	Low	Very Low
Improved Significantly	Excellent	Good	Good	Good	Acceptable
Improved	Excellent	Good	Good	Acceptable	Issue
Maintained	Excellent	Good	Acceptable	Issue	Concern
Declined	Good	Acceptable	Issue	Issue	Concern
Declined Significantly	Acceptable	Issue	Issue	Concern	Concern

Category Evaluation

The category evaluation is an average of the Overall Evaluation of the measures that make up the category. For the purpose of the calculation, consider an Overall Evaluation of Excellent to be 2, Good to be 1, Acceptable to be 0, Issue to be -1, and Concern to be -2. The simple average (mean) of these values rounded to the nearest integer produces the Category Evaluation value. This is converted back to a colour using the same scale above (e.g. 2=Excellent, 1=Good, 0=Intermediate, -1=Issue, -2=Concern)

Goal One: An excellent start to learning

Outcome: *Children are reaching emotional, social, intellectual and physical development milestones and are ready for school.*

- There are no required performance measures for this goal. Schools are encouraged to incorporate early development data available at the local level.

<p>Comment on Results</p>

<p><i>(an assessment of progress toward achieving the target)</i></p>

<p><i>Emotional, social, intellectual and physical development is a permanent part of school goals.</i></p>

<p>Strategies</p>

<p><i>Continued focus on health and safety.</i></p>

Goal Two: Success for Every Student

Outcome: Students achieve student learning outcomes.

[No Data for Diploma Exam Results]

Performance Measure	Results (in percentages)					Target	Evaluation			Targets		
	2009	2010	2011	2012	2013	2014	Achievement	Improvement	Overall	2015	2016	2017
High School Completion Rate - Percentage of students who completed high school within three years of entering Grade 10.	n/a	n/a	n/a	n/a	n/a		n/a	n/a	n/a			
Drop Out Rate - annual dropout rate of students aged 14 to 18	n/a	n/a	n/a	n/a	n/a		n/a	n/a	n/a			
High school to post-secondary transition rate of students within six years of entering Grade 10.	n/a	n/a	n/a	n/a	n/a		n/a	n/a	n/a			
Percentage of Grade 12 students eligible for a Rutherford Scholarship.	n/a	n/a	n/a	n/a	n/a		n/a	n/a	n/a			
Percentage of students writing four or more diploma exams within three years of entering Grade 10.	n/a	n/a	n/a	n/a	n/a		n/a	n/a	n/a			

Comment on Results

(an assessment of progress toward achieving the target)

Strategies

Notes:

1. Aggregated Diploma results are a weighted average of percent meeting standards (Acceptable, Excellence) on Diploma Examinations. The weights are the number of students writing the Diploma Examination for each course. Courses included: English Language Arts 30-1, English Language Arts 30-2, French Language Arts 30-1, Français 30-1, Chemistry 30, Physics 30, Biology 30, Science 30, Social Studies 30-1, Social Studies 30-2.
2. Diploma Examination Participation, High School Completion and High school to Post-secondary Transition rates are based upon a cohort of grade 10 students who are tracked over time.
3. Data values have been suppressed where the number of students or respondents is less than 6. Suppression is marked with an asterisk (*).
4. Please note that participation in Diploma Examinations was impacted by the flooding in June 2013. Caution should be used when interpreting trends over time for the province and those school authorities affected by the floods.

Outcome: *Students demonstrate proficiency in literacy and numeracy.*

Performance Measure	Results (in percentages)					Target	Evaluation			Targets		
	2010	2011	2012	2013	2014	2014	Achievement	Improvement	Overall	2015	2016	2017
Overall percentage of students in Grades 6 and 9 who achieved the acceptable standard on Provincial Achievement Tests (overall cohort results).	85.3	76.6	84.4	67.9	81.3	90	Intermediate	Maintained	Acceptable	85	85	85
Overall percentage of students in Grades 6 and 9 who achieved the standard of excellence on Provincial Achievement Tests (overall cohort results).	19.4	15.6	21.3	7.4	8.0	25	Very Low	Declined	Concern	20	25	25

<p>Comment on Results <i>(an assessment of progress toward achieving the target)</i> Excelling in all subjects was low.</p>
<p>Strategies <i>We started with some interesting staff discussion on excellence which generated questions on how we push for excellence and what excellence can mean. Very fruitful.</i></p>

Notes:

1. Aggregated PAT results are based upon a weighted average of percent meeting standards (Acceptable, Excellence). The weights are the number of students enrolled in each course. Courses included: English Language Arts (Grades 6, 9, 9 KAE), Français (Grades 6, 9), French Language Arts (Grades 6, 9), Mathematics 9 KAE, Science (Grades 6, 9, 9 KAE), Social Studies (Grades 6, 9, 9 KAE). Grade 3 results were not included due to the introduction of the Student Learning Assessment Pilot.
2. Data values have been suppressed where the number of students or respondents is less than 6. Suppression is marked with an asterisk (*).
3. Please note that participation in Grade 9 Provincial Achievement Tests was substantially impacted by the flooding in June 2013. Caution should be used when interpreting trends over time for the province and those school authorities affected by the floods.

Outcome: *Students demonstrate citizenship and entrepreneurship.*

Performance Measure	Results (in percentages)					Target	Evaluation			Targets		
	2010	2011	2012	2013	2014	2014	Achievement	Improvement	Overall	2015	2016	2017
Percentage of teachers, parents and students who are satisfied that students model the characteristics of active citizenship.	73.1	72.8	80.9	82.5	84.7	85	Very High	Improved	Excellent	90	90	90
Percentage of teachers and parents who agree that students are taught attitudes and behaviours that will make them successful at work when they finish school.	70.4	79.6	88.3	76.2	87.5	90	Very High	Maintained	Excellent	85	85	85

Comment on Results
(an assessment of progress toward achieving the target)

Satisfied.

Strategies

Continue to encourage participation in surveys to get better data.

Note: Data values have been suppressed where the number of students or respondents is less than 6. Suppression is marked with an asterisk (*).

Survey results for the province and some school authorities were impacted by an increase in the number of students responding to the survey through the introduction of the Tell THEM From ME survey tool in 2014.

Outcome: *The achievement gap between First Nations, Métis and Inuit (FNMI) students and all other students is eliminated.*

(Results and evaluations for FNMI measures are required for Public/Separate/Francophone School Authorities only)

Performance Measure	Results (in percentages)					Target	Evaluation			Targets		
	2010	2011	2012	2013	2014	2014	Achievement	Improvement	Overall	2015	2016	2017
Overall percentage of self-identified FNMI students in Grades 6 and 9 who achieved the acceptable standard on Provincial Achievement Tests (overall cohort results).	*	*	*	66.7	85.7	90	High	Maintained	Good	90	90	90
Overall percentage of self-identified FNMI students in Grades 6 and 9 who achieved the standard of excellence on Provincial Achievement Tests (overall cohort results).	*	*	*	4.8	0.0	20	Very Low	Maintained	Concern	25	25	25
Overall percentage of self-identified FNMI students who achieved the acceptable standard on diploma examinations (overall results).	n/a	n/a	n/a	n/a	n/a		n/a	n/a	n/a			
Overall percentage of self-identified FNMI students who achieved the standard of excellence on diploma examinations (overall results).	n/a	n/a	n/a	n/a	n/a		n/a	n/a	n/a			

Performance Measure	Results (in percentages)					Target	Evaluation			Targets		
	2009	2010	2011	2012	2013	2014	Achievement	Improvement	Overall	2015	2016	2017
High School Completion Rate - Percentage of self-identified FNMI students who completed high school within three years of entering Grade 10.	n/a	n/a	n/a	n/a	n/a		n/a	n/a	n/a			
Drop Out Rate - annual dropout rate of self-identified FNMI students aged 14 to 18	n/a	n/a	n/a	n/a	n/a		n/a	n/a	n/a			
High school to post-secondary transition rate of self-identified FNMI students within six years of entering Grade 10.	n/a	n/a	n/a	n/a	n/a		n/a	n/a	n/a			
Percentage of Grade 12 self-identified FNMI students eligible for a Rutherford Scholarship.	n/a	n/a	n/a	n/a	n/a		n/a	n/a	n/a			
Percentage of self-identified FNMI students writing four or more diploma exams within three years of entering Grade 10.	n/a	n/a	n/a	n/a	n/a		n/a	n/a	n/a			

Comment on Results

(an assessment of progress toward achieving the target)

Small group to gather data. One or two students makes an exaggerated statement.

Strategies

Continue to recognize diversity in our classrooms.

Notes:

1. Aggregated PAT results are based upon a weighted average of percent meeting standards (Acceptable, Excellence). The weights are the number of students enrolled in each course. Courses included: English Language Arts (Grades 6, 9, 9 KAE), Français (Grades 6, 9), French Language Arts (Grades 6, 9), Mathematics 9 KAE, Science (Grades 6, 9, 9 KAE), Social Studies (Grades 6, 9, 9 KAE). Grade 3 results were not included due to the introduction of the Student Learning Assessment Pilot.
2. Aggregated Diploma results are a weighted average of percent meeting standards (Acceptable, Excellence) on Diploma Examinations. The weights are the number of students writing the Diploma Examination for each course. Courses included: English Language Arts 30-1, English Language Arts 30-2, French Language Arts 30-1, Français 30-1, Chemistry 30, Physics 30, Biology 30, Science 30, Social Studies 30-1, Social Studies 30-2.
3. Diploma Examination Participation, High School Completion and High school to Post-secondary Transition rates are based upon a cohort of grade 10 students who are tracked over time.
4. Data values have been suppressed where the number of students or respondents is less than 6. Suppression is marked with an asterisk (*).

Goal Three: Quality teaching and school leadership

Outcome: Teacher preparation and professional growth focus on the competencies needed to help students learn. Effective learning and teaching is achieved through collaborative leadership.

Performance Measure	Results (in percentages)					Target	Evaluation			Targets		
	2010	2011	2012	2013	2014	2014	Achievement	Improvement	Overall	2015	2016	2017
Percentage of teachers, parents and students satisfied with the opportunity for students to receive a broad program of studies including fine arts, career, technology, and health and physical education.	72.7	76.1	73.8	73.7	74.2	85	Intermediate	Maintained	Acceptable	85	85	85

Comment on Results

*(an assessment of progress toward achieving the target)
Logistically impossible to cover all possible reasons for lower results.*

Strategies

Promote the emphasis on health, authentic use of technology, fine arts and physical education that we continuing to strive for.

Note: Data values have been suppressed where the number of students or respondents is less than 6. Suppression is marked with an asterisk (*).

Survey results for the province and some school authorities were impacted by an increase in the number of students responding to the survey through the introduction of the Tell THEM From ME survey tool in 2014.

Goal Four: Engaged and effective governance

Outcome: The education system demonstrates collaboration and engagement.

Performance Measure	Results (in percentages)					Target	Evaluation			Targets		
	2010	2011	2012	2013	2014	2014	Achievement	Improvement	Overall	2015	2016	2017
Percentage of teachers and parents satisfied with parental involvement in decisions about their child's education.	85.8	83.2	87.1	85.4	91.3	90	Very High	Maintained	Excellent	90	90	90
Percentage of teachers, parents and students satisfied with the overall quality of basic education.	93.7	93.5	90.6	95.2	90.9	90	Very High	Maintained	Excellent	95	95	95

Comment on Results

(an assessment of progress toward achieving the target)

Satisfied.

Strategies

Continue to share goals and PD work that we are doing with the school community.

Note: Data values have been suppressed where the number of students or respondents is less than 6. Suppression is marked with an asterisk (*).

Survey results for the province and some school authorities were impacted by an increase in the number of students responding to the survey through the introduction of the Tell THEM From ME survey tool in 2014.

Outcome: *Students and communities have access to safe and healthy learning environments.*

Performance Measure	Results (in percentages)					Target	Evaluation			Targets		
	2010	2011	2012	2013	2014	2014	Achievement	Improvement	Overall	2015	2016	2017
Percentage of teacher, parent and student agreement that: students are safe at school, are learning the importance of caring for others, are learning respect for others and are treated fairly in school.	80.5	84.5	82.0	83.6	89.1	85	Very High	Improved	Excellent	90	90	90
Percentage of teachers, parents and students indicating that their school and schools in their jurisdiction have improved or stayed the same the last three years.	87.7	87.3	87.8	87.6	77.7	90	High	Declined	Acceptable	95	95	95

Comment on Results

(an assessment of progress toward achieving the target)

We know that some challenging students have created discomfort for some parents. Privacy prevents them from being privy to the intense work we are doing with these challenged kids.

Strategies

Safe and caring is our number one priority. Continue to promote and emphasize this.

Note: Data values have been suppressed where the number of students or respondents is less than 6. Suppression is marked with an asterisk (*).
 Survey results for the province and some school authorities were impacted by an increase in the number of students responding to the survey through the introduction of the Tell THEM From ME survey tool in 2014.

APPENDIX – Measure Details

The following pages include tables and graphs that provide detailed data for the performance measures. Schools may include these under each measure/outcome to provide context and help in interpreting the results.

Diploma Examination Results – Measure Details

[No Data for Diploma Exam Results]

Note: Data values have been suppressed where the number of students or respondents is less than 6. Suppression is marked with an asterisk (*).

“A” = Acceptable; “E” = Excellence — the percentages achieving the acceptable standard include the percentages achieving the standard of excellence.

Please note that participation in Diploma Examinations was impacted by the flooding in June 2013. Caution should be used when interpreting trends over time for the province and those school authorities affected by the floods.

Graph of Diploma Examination Results – Overall

[No Data for Diploma Exam Results]

Note: Please note that participation in Diploma Examinations was impacted by the flooding in June 2013. Caution should be used when interpreting trends over time for the province and those school authorities affected by the floods.

Diploma Examination Results by Course	
[No Data for English Lang Arts 30-1]	[No Data for English Lang Arts 30-2]
[No Data for French Lang Arts 30-1]	[No Data for Français 30]
[No Data for Pure Mathematics 30]	[No Data for Mathematics 30-1]

Note: Data values have been suppressed where the number of students or respondents is less than 6. Suppression is marked with an asterisk (*).
 Please note that participation in Diploma Examinations was impacted by the flooding in June 2013. Caution should be used when interpreting trends over time for the province and those school authorities affected by the floods.

Diploma Examination Results by Course	
[No Data for Applied Mathematics 30]	[No Data for Mathematics 30-2]
[No Data for Social Studies 30]	[No Data for Social Studies 30-1]
[No Data for Social Studies 33]	[No Data for Social Studies 30-2]

Note: Data values have been suppressed where the number of students or respondents is less than 6. Suppression is marked with an asterisk (*).
 Please note that participation in Diploma Examinations was impacted by the flooding in June 2013. Caution should be used when interpreting trends over time for the province and those school authorities affected by the floods.

Diploma Examination Results by Course	
[No Data for Biology 30]	[No Data for Chemistry 30 Old]
[No Data for Chemistry 30]	[No Data for Physics 30 Old]
[No Data for Physics 30]	[No Data for Science 30]

Note: Data values have been suppressed where the number of students or respondents is less than 6. Suppression is marked with an asterisk (*).
 Please note that participation in Diploma Examinations was impacted by the flooding in June 2013. Caution should be used when interpreting trends over time for the province and those school authorities affected by the floods.

Diploma Examination Results Course By Course Summary With Measure Evaluation

[No Data for Diploma Exam Results]

Note: Data values have been suppressed where the number of students or respondents is less than 6. Suppression is marked with an asterisk (*). Achievement Evaluation is not calculated for courses that do not have sufficient data available, either due to too few jurisdictions offering the course or because of changes in examinations.

Please note that participation in Diploma Examinations was impacted by the flooding in June 2013. Caution should be used when interpreting trends over time for the province and those school authorities affected by the floods.

Measure Evaluation Reference - Achievement Evaluation

Achievement evaluation is based upon a comparison of Current Year data to a set of standards which remain consistent over time. The Standards are calculated by taking the 3 year average of baseline data for each measure across all school jurisdictions and calculating the 5th, 25th, 75th, and 95th percentiles. Once calculated, these standards remain in place from year to year to allow for consistent planning and evaluation.

The table below shows the range of values defining the 5 achievement evaluation levels for each measure.

[No Data for Diploma Achievement Evaluation Reference]

Notes:

The range of values at each evaluation level is interpreted as greater than or equal to the lower value, and less than the higher value. For the Very High evaluation level, values range from greater than or equal to the lower value to 100%.

Achievement Evaluation is not calculated for courses that do not have sufficient data available, either due to too few jurisdictions offering the course or because of changes in examinations.

Improvement Table

For each jurisdiction, improvement evaluation consists of comparing the Current Year result for each measure with the previous three-year average. A chi-square statistical test is used to determine the significance of the improvement. This test takes into account the size of the jurisdiction in the calculation to make improvement evaluation fair across jurisdictions of different sizes.

The table below shows the definition of the 5 improvement evaluation levels based upon the chi-square result.

[No Data for Diploma Improvement Reference]

Overall Evaluation Table

The overall evaluation combines the Achievement Evaluation and the Improvement Evaluation. The table below illustrates how the Achievement and Improvement evaluations are combined to get the overall evaluation.

[No Data for Diploma Overall Evaluation Reference]

High School Completion Rate – Measure Details

[No Data for High School Completion Rate]

<p>Graph of School Results</p> <p>[No Data for High School Completion Rate]</p>	<p>Graph of School Results</p> <p>[No Data for High School Completion Rate]</p>
<p>Graph of School Results</p> <p>[No Data for High School Completion Rate]</p>	

Note: Data values have been suppressed where the number of students or respondents is less than 6. Suppression is marked with an asterisk (*).

Drop Out Rate – Measure Details

[No Data for Dropout Rate]

<p>Graph of School Results</p> <p>[No Data for Dropout Rate]</p>	<p>Graph of School Results</p> <p>[No Data for Returning Rate]</p>
--	--

Note: Data values have been suppressed where the number of students or respondents is less than 6. Suppression is marked with an asterisk (*).

High School to Post-secondary Transition Rate – Measure Details

[No Data for High School to Post-Secondary Transition Rate]

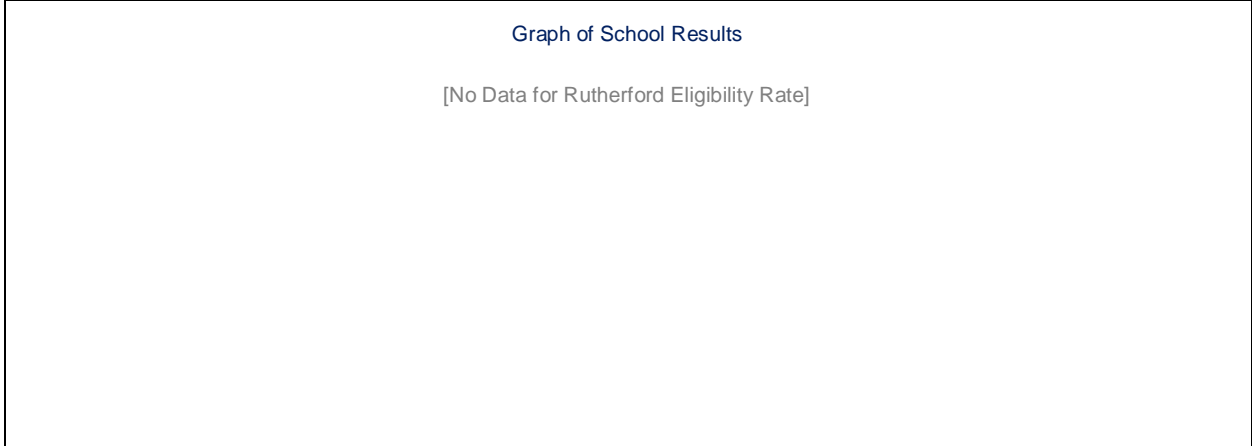
<p style="text-align: center;">Graph of School Results</p> <p>[No Data for High School to Post-Secondary Transition Rate]</p>	<p style="text-align: center;">Graph of School Results</p> <p>[No Data for High School to Post-Secondary Transition Rate]</p>
---	---

Note: Data values have been suppressed where the number of students or respondents is less than 6. Suppression is marked with an asterisk (*).

Rutherford Eligibility Rate – Measure Details

[No Data for Rutherford Eligibility Rate]

[No Data for Rutherford Eligibility Rate]



Note: Data values have been suppressed where the number of students or respondents is less than 6. Suppression is marked with an asterisk (*).

Diploma Examination Participation Rate – Measure Details

[No Data for Diploma Exam Participation Rate]

Graph of School Results

[No Data for Diploma Exam Participation Rate]

[No Data for Diploma Exam Participation Rate]

Note: Data values have been suppressed where the number of students or respondents is less than 6. Suppression is marked with an asterisk (*).

Please note that participation in Diploma Examinations was impacted by the flooding in June 2013. Caution should be used when interpreting trends over time for the province and those school authorities affected by the floods.

Provincial Achievement Test Results – Measure Details

PAT Course by Course Results by Number Enrolled.													
		Results (in percentages)										Target	
		2010		2011		2012		2013		2014		2014	
		A	E	A	E	A	E	A	E	A	E	A	E
English Language Arts 3*	School	69.4	8.2	81.3	6.3	80.0	8.0	76.5	15.7	n/a	n/a		
	Authority	84.2	16.9	86.2	9.8	84.9	12.6	83.3	12.6	85.7	23.8		
	Province	81.6	19.5	81.8	17.5	81.9	20.4	81.5	17.8	78.0	15.3		
French Language Arts 3*	School	n/a	n/a	n/a	n/a	n/a	n/a	n/a	n/a	n/a	n/a		
	Authority	72.4	3.4	92.3	11.5	85.7	17.9	65.4	3.8	n/a	n/a		
	Province	84.1	16.3	80.6	15.8	82.1	14.5	79.7	12.4	74.6	10.4		
Français 3*	School	n/a	n/a	n/a	n/a	n/a	n/a	n/a	n/a	n/a	n/a		
	Authority	n/a	n/a	n/a	n/a	n/a	n/a	n/a	n/a	n/a	n/a		
	Province	86.4	16.3	84.2	18.6	82.3	12.5	82.8	14.1	78.2	7.0		
Mathematics 3*	School	n/a	n/a	81.3	18.8	78.0	14.0	72.5	19.6	n/a	n/a		
	Authority	n/a	n/a	80.3	21.1	80.3	18.6	78.3	24.5	90.5	52.4		
	Province	n/a	n/a	77.4	26.0	76.8	25.5	76.5	25.5	74.0	25.1		
English Language Arts 6	School	90.7	9.3	80.9	8.5	80.9	8.5	81.5	7.4	78.0	4.0	85	20
	Authority	83.0	13.1	83.2	9.2	85.1	9.2	86.7	11.9	78.7	8.7		
	Province	83.3	18.9	83.0	18.5	82.7	17.8	82.5	16.3	81.9	17.6		
French Language Arts 6	School	n/a	n/a	n/a	n/a	n/a	n/a	n/a	n/a	n/a	n/a		
	Authority	72.2	5.6	73.9	8.7	94.7	15.8	77.8	0.0	85.7	4.8		
	Province	88.3	15.9	89.4	17.1	89.3	17.2	88.6	16.3	88.0	15.6		
Français 6	School	n/a	n/a	n/a	n/a	n/a	n/a	n/a	n/a	n/a	n/a		
	Authority	n/a	n/a	n/a	n/a	n/a	n/a	n/a	n/a	n/a	n/a		
	Province	91.3	18.3	92.2	17.6	91.0	21.9	94.0	21.6	90.6	17.1		
Mathematics 6	School	n/a	n/a	76.6	17.0	85.1	10.6	48.1	1.9	80.0	2.0	85	20
	Authority	n/a	n/a	73.3	12.3	70.7	9.2	69.5	10.0	69.4	8.5		
	Province	n/a	n/a	73.7	17.8	74.7	16.6	73.0	16.4	73.5	15.4		
Science 6	School	83.7	30.2	83.0	29.8	91.5	44.7	63.0	11.1	88.0	18.0	85	20
	Authority	79.4	22.5	77.4	23.4	79.9	21.3	77.0	17.7	73.2	15.8		
	Province	76.8	26.4	76.2	25.0	77.8	28.2	77.5	25.9	75.9	24.9		
Social Studies 6	School	81.4	18.6	66.0	8.5	80.9	10.6	59.3	3.7	78.0	2.0	85	20
	Authority	71.3	13.1	71.5	11.0	71.8	11.5	72.6	11.4	63.4	8.7		
	Province	71.0	16.4	71.1	18.5	73.2	19.5	72.7	19.0	70.4	16.6		
English Language Arts 9	School	n/a	n/a	n/a	n/a	n/a	n/a	n/a	n/a	n/a	n/a		
	Authority	76.0	9.3	81.6	12.4	76.6	12.4	76.8	11.7	76.5	7.3		
	Province	79.3	15.0	79.1	16.3	77.4	16.4	76.7	14.8	76.3	15.1		
English Lang Arts 9 KAE	School	n/a	n/a	n/a	n/a	n/a	n/a	n/a	n/a	n/a	n/a		
	Authority	73.3	3.3	56.0	8.0	76.9	15.4	28.0	0.0	75.0	0.0		
	Province	66.8	7.8	67.2	7.9	61.4	5.8	62.4	4.3	62.9	3.5		
French Language Arts 9	School	n/a	n/a	n/a	n/a	n/a	n/a	n/a	n/a	n/a	n/a		
	Authority	60.0	20.0	62.5	0.0	n/a	n/a	n/a	n/a	n/a	n/a		
	Province	86.1	12.4	88.8	15.0	87.5	12.2	87.2	13.9	86.5	11.1		
Français 9	School	n/a	n/a	n/a	n/a	n/a	n/a	n/a	n/a	n/a	n/a		
	Authority	n/a	n/a	n/a	n/a	n/a	n/a	n/a	n/a	n/a	n/a		
	Province	84.3	12.7	90.2	15.8	84.6	16.1	84.0	14.5	86.1	17.8		
Mathematics 9	School	n/a	n/a	n/a	n/a	n/a	n/a	n/a	n/a	n/a	n/a		
	Authority	n/a	n/a	52.9	9.2	58.8	8.8	62.1	12.3	63.4	14.4		
	Province	n/a	n/a	66.1	17.3	66.5	17.8	66.9	18.3	67.1	17.3		
Mathematics 9 KAE	School	n/a	n/a	n/a	n/a	n/a	n/a	n/a	n/a	n/a	n/a		
	Authority	57.6	18.2	68.0	0.0	92.9	42.9	26.9	0.0	77.8	22.2		
	Province	65.6	15.3	64.9	14.9	62.4	15.4	65.9	14.7	63.4	14.5		

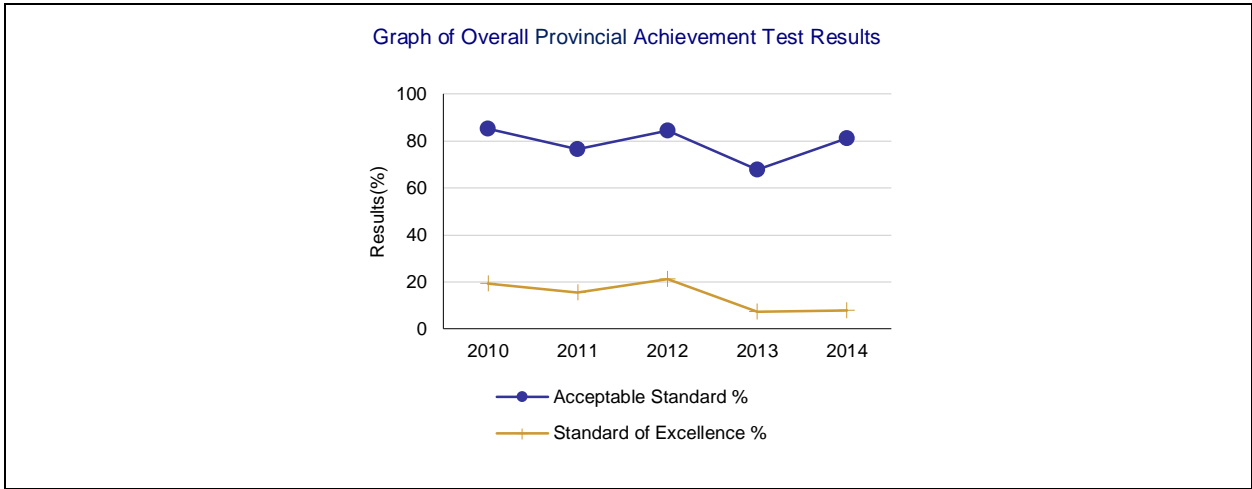
Science 9	School	n/a	n/a	n/a	n/a	n/a	n/a	n/a	n/a	n/a	n/a		
	Authority	71.0	17.5	77.4	15.0	74.8	25.2	70.1	16.7	75.2	25.4		
	Province	73.6	17.7	74.9	20.8	74.2	22.4	73.0	20.0	73.2	22.1		
Science 9 KAE	School	n/a	n/a	n/a	n/a	n/a	n/a	n/a	n/a	n/a	n/a		
	Authority	76.7	20.0	56.0	12.0	90.9	36.4	28.0	0.0	77.8	11.1		
	Province	67.2	14.3	69.5	15.3	67.9	17.3	68.4	17.1	64.1	14.9		
Social Studies 9	School	n/a	n/a	n/a	n/a	n/a	n/a	n/a	n/a	n/a	n/a		
	Authority	65.9	14.7	61.6	13.2	61.5	11.2	56.5	14.1	63.5	13.2		
	Province	68.9	18.8	67.2	19.0	68.9	19.1	65.6	18.8	65.5	19.9		
Social Studies 9 KAE	School	n/a	n/a	n/a	n/a	n/a	n/a	n/a	n/a	n/a	n/a		
	Authority	70.0	26.7	44.0	8.0	83.3	16.7	26.9	3.8	50.0	12.5		
	Province	64.6	15.7	61.9	13.6	63.5	13.9	64.6	13.0	61.8	10.7		

Note: Data values have been suppressed where the number of students or respondents is less than 6. Suppression is marked with an asterisk (*).

"A" = Acceptable; "E" = Excellence — the percentages achieving the acceptable standard include the percentages achieving the standard of excellence.

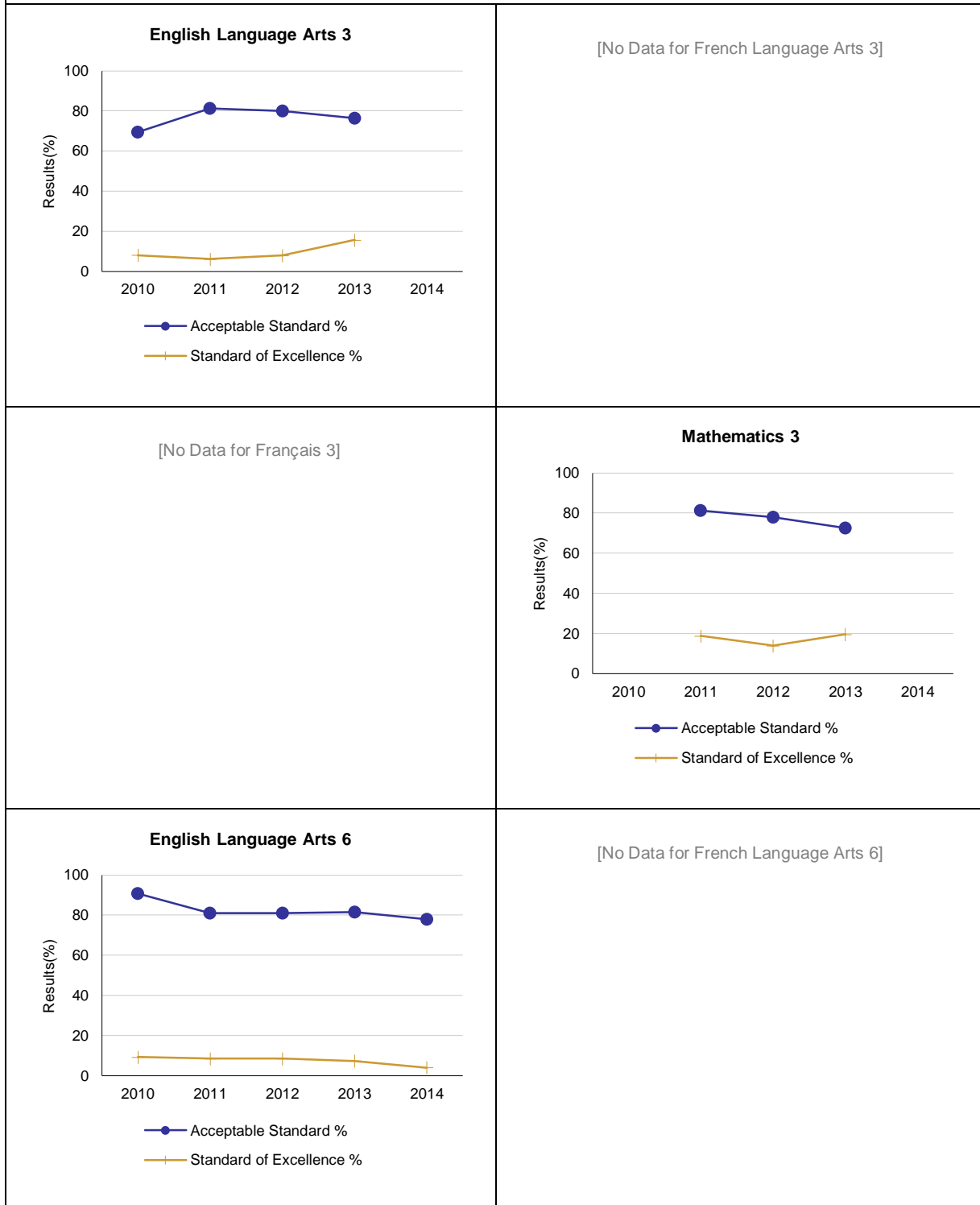
Please note that participation in Grade 9 Provincial Achievement Tests was substantially impacted by the flooding in June 2013. Caution should be used when interpreting trends over time for the province and those school authorities affected by the floods.

*School authorities that do not have students participating in the Grade 3 Provincial Achievement Tests due to their participation in the Student Learning Assessment Pilot in Fall 2014 are not required to include Grade 3 Provincial Achievement Test results in their plans and reports.



Note: Please note that participation in Grade 9 Provincial Achievement Tests was substantially impacted by the flooding in June 2013. Caution should be used when interpreting trends over time for the province and those school authorities affected by the floods.

Graph of Provincial Achievement Test Results by Course

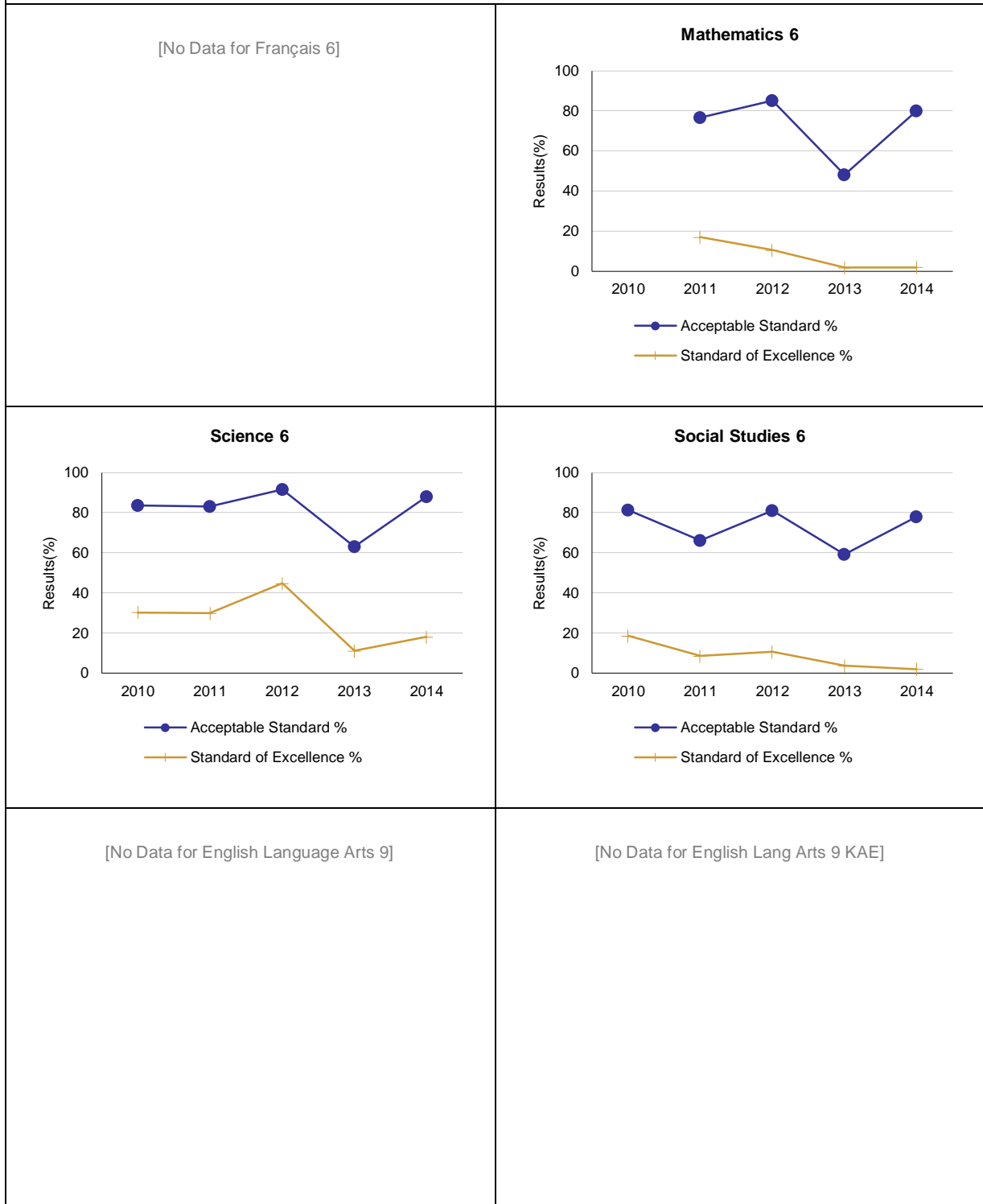


Note: Data values have been suppressed where the number of students or respondents is less than 6. Suppression is marked with an asterisk (*).

Please note that participation in Grade 9 Provincial Achievement Tests was substantially impacted by the flooding in June 2013. Caution should be used when interpreting trends over time for the province and those school authorities affected by the floods.

School authorities that do not have students participating in the Grade 3 Provincial Achievement Tests due to their participation in the Student Learning Assessment Pilot in Fall 2014 are not required to include Grade 3 Provincial Achievement Test results in their plans and reports.

Graph of Provincial Achievement Test Results by Course



Note: Data values have been suppressed where the number of students or respondents is less than 6. Suppression is marked with an asterisk (*).

Please note that participation in Grade 9 Provincial Achievement Tests was substantially impacted by the flooding in June 2013. Caution should be used when interpreting trends over time for the province and those school authorities affected by the floods.

Graph of Provincial Achievement Test Results by Course	
[No Data for French Language Arts 9]	[No Data for Français 9]
[No Data for Mathematics 9]	[No Data for Mathematics 9 KAE]
[No Data for Science 9]	[No Data for Science 9 KAE]

Note: Data values have been suppressed where the number of students or respondents is less than 6. Suppression is marked with an asterisk (*).

Please note that participation in Grade 9 Provincial Achievement Tests was substantially impacted by the flooding in June 2013. Caution should be used when interpreting trends over time for the province and those school authorities affected by the floods.

Graph of Provincial Achievement Test Results by Course	
[No Data for Social Studies 9]	[No Data for Social Studies 9 KAE]

Note: Data values have been suppressed where the number of students or respondents is less than 6. Suppression is marked with an asterisk (*).

Please note that participation in Grade 9 Provincial Achievement Tests was substantially impacted by the flooding in June 2013. Caution should be used when interpreting trends over time for the province and those school authorities affected by the floods.

PAT Results Course By Course Summary By Enrolled With Measure Evaluation

Course	Measure	Evergreen Elementary School						Alberta				
		Achievement	Improvement	Overall	2014		Prev 3 Yr Avg		2014		Prev 3 Yr Avg	
					N	%	N	%	N	%	N	%
English Language Arts 3*	Acceptable Standard	n/a	n/a	n/a	n/a	n/a	50	79.2	16,235	78.0	44,576	81.7
	Standard of Excellence	n/a	n/a	n/a	n/a	n/a	50	10.0	16,235	15.3	44,576	18.6
French Language Arts 3*	Acceptable Standard	n/a	n/a	n/a	n/a	n/a	n/a	n/a	966	74.6	3,319	80.8
	Standard of Excellence	n/a	n/a	n/a	n/a	n/a	n/a	n/a	966	10.4	3,319	14.3
Français 3*	Acceptable Standard	n/a	n/a	n/a	n/a	n/a	n/a	n/a	358	78.2	540	83.1
	Standard of Excellence	n/a	n/a	n/a	n/a	n/a	n/a	n/a	358	7.0	540	15.1
Mathematics 3*	Acceptable Standard	n/a	n/a	n/a	n/a	n/a	50	77.3	16,202	74.0	44,562	76.9
	Standard of Excellence	n/a	n/a	n/a	n/a	n/a	50	17.5	16,202	25.1	44,562	25.7
English Language Arts 6	Acceptable Standard	Low	Maintained	Issue	50	78.0	49	81.1	45,704	81.9	43,581	82.7
	Standard of Excellence	Very Low	Maintained	Concern	50	4.0	49	8.1	45,704	17.6	43,581	17.5
French Language Arts 6	Acceptable Standard	n/a	n/a	n/a	n/a	n/a	n/a	n/a	2,752	88.0	2,609	89.1
	Standard of Excellence	n/a	n/a	n/a	n/a	n/a	n/a	n/a	2,752	15.6	2,609	16.9
Français 6	Acceptable Standard	n/a	n/a	n/a	n/a	n/a	n/a	n/a	531	90.6	474	92.4
	Standard of Excellence	n/a	n/a	n/a	n/a	n/a	n/a	n/a	531	17.1	474	20.4
Mathematics 6	Acceptable Standard	High	Improved	Good	50	80.0	49	70.0	45,617	73.5	43,599	73.8
	Standard of Excellence	Very Low	Declined	Concern	50	2.0	49	9.8	45,617	15.4	43,599	17.0
Science 6	Acceptable Standard	High	Improved	Good	50	88.0	49	79.1	45,608	75.9	43,551	77.2
	Standard of Excellence	Intermediate	Declined	Issue	50	18.0	49	28.5	45,608	24.9	43,551	26.4
Social Studies 6	Acceptable Standard	High	Improved	Good	50	78.0	49	68.7	45,593	70.4	43,540	72.3
	Standard of Excellence	Very Low	Declined	Concern	50	2.0	49	7.6	45,593	16.6	43,540	19.0
English Language Arts 9	Acceptable Standard	n/a	n/a	n/a	n/a	n/a	n/a	n/a	43,760	76.3	37,776	77.8
	Standard of Excellence	n/a	n/a	n/a	n/a	n/a	n/a	n/a	43,760	15.1	37,776	15.8
English Lang Arts 9 KAE	Acceptable Standard	n/a	n/a	n/a	n/a	n/a	n/a	n/a	1,524	62.9	1,570	63.7
	Standard of Excellence	n/a	n/a	n/a	n/a	n/a	n/a	n/a	1,524	3.5	1,570	6.0
French Language Arts 9	Acceptable Standard	n/a	n/a	n/a	n/a	n/a	n/a	n/a	2,658	86.5	2,387	87.8
	Standard of Excellence	n/a	n/a	n/a	n/a	n/a	n/a	n/a	2,658	11.1	2,387	13.7

Note: Data values have been suppressed where the number of students or respondents is less than 6. Suppression is marked with an asterisk (*).

Achievement Evaluation is not calculated for courses that do not have sufficient data available, either due to too few jurisdictions offering the course or because of changes in tests.

Please note that participation in Grade 9 Provincial Achievement Tests was substantially impacted by the flooding in June 2013. Caution should be used when interpreting trends over time for the province and those school authorities affected by the floods.

*School authorities that do not have students participating in the Grade 3 Provincial Achievement Tests due to their participation in the Student Learning Assessment Pilot in Fall 2014 are not required to include Grade 3 Provincial Achievement Test results in their plans and reports.

Course	Measure	Evergreen Elementary School							Alberta			
		Achievement	Improvement	Overall	2014		Prev 3 Yr Avg		2014		Prev 3 Yr Avg	
					N	%	N	%	N	%	N	%
Français 9	Acceptable Standard	n/a	n/a	n/a	n/a	n/a	n/a	n/a	381	86.1	330	86.3
	Standard of Excellence	n/a	n/a	n/a	n/a	n/a	n/a	n/a	381	17.8	330	15.5
Mathematics 9	Acceptable Standard	n/a	n/a	n/a	n/a	n/a	n/a	n/a	43,279	67.1	37,487	66.5
	Standard of Excellence	n/a	n/a	n/a	n/a	n/a	n/a	n/a	43,279	17.3	37,487	17.8
Mathematics 9 KAE	Acceptable Standard	n/a	n/a	n/a	n/a	n/a	n/a	n/a	1,971	63.4	1,846	64.4
	Standard of Excellence	n/a	n/a	n/a	n/a	n/a	n/a	n/a	1,971	14.5	1,846	15.0
Science 9	Acceptable Standard	n/a	n/a	n/a	n/a	n/a	n/a	n/a	43,769	73.2	37,974	74.0
	Standard of Excellence	n/a	n/a	n/a	n/a	n/a	n/a	n/a	43,769	22.1	37,974	21.1
Science 9 KAE	Acceptable Standard	n/a	n/a	n/a	n/a	n/a	n/a	n/a	1,513	64.1	1,528	68.6
	Standard of Excellence	n/a	n/a	n/a	n/a	n/a	n/a	n/a	1,513	14.9	1,528	16.6
Social Studies 9	Acceptable Standard	n/a	n/a	n/a	n/a	n/a	n/a	n/a	43,773	65.5	38,159	67.2
	Standard of Excellence	n/a	n/a	n/a	n/a	n/a	n/a	n/a	43,773	19.9	38,159	19.0
Social Studies 9 KAE	Acceptable Standard	n/a	n/a	n/a	n/a	n/a	n/a	n/a	1,510	61.8	1,510	63.3
	Standard of Excellence	n/a	n/a	n/a	n/a	n/a	n/a	n/a	1,510	10.7	1,510	13.5

Note: Data values have been suppressed where the number of students or respondents is less than 6. Suppression is marked with an asterisk (*).

Achievement Evaluation is not calculated for courses that do not have sufficient data available, either due to too few jurisdictions offering the course or because of changes in tests.

Please note that participation in Grade 9 Provincial Achievement Tests was substantially impacted by the flooding in June 2013. Caution should be used when interpreting trends over time for the province and those school authorities affected by the floods.

*School authorities that do not have students participating in the Grade 3 Provincial Achievement Tests due to their participation in the Student Learning Assessment Pilot in Fall 2014 are not required to include Grade 3 Provincial Achievement Test results in their plans and reports.

Measure Evaluation Reference - Achievement Evaluation

Achievement evaluation is based upon a comparison of Current Year data to a set of standards which remain consistent over time. The Standards are calculated by taking the 3 year average of baseline data for each measure across all school jurisdictions and calculating the 5th, 25th, 75th, and 95th percentiles. Once calculated, these standards remain in place from year to year to allow for consistent planning and evaluation.

The table below shows the range of values defining the 5 achievement evaluation levels for each measure.

Course	Measure	Very Low	Low	Intermediate	High	Very High
English Language Arts 3	Acceptable Standard	0.00 - 72.53	72.53 - 80.49	80.49 - 89.12	89.12 - 93.04	93.04 - 100.00
	Standard of Excellence	0.00 - 6.06	6.06 - 11.35	11.35 - 16.93	16.93 - 20.27	20.27 - 100.00
French Language Arts 3	Acceptable Standard	0.00 - 60.68	60.68 - 77.74	77.74 - 88.22	88.22 - 94.87	94.87 - 100.00
	Standard of Excellence	0.00 - 3.31	3.31 - 8.38	8.38 - 17.31	17.31 - 25.31	25.31 - 100.00
Mathematics 3	Acceptable Standard	0.00 - 65.67	65.67 - 76.54	76.54 - 84.30	84.30 - 89.88	89.88 - 100.00
	Standard of Excellence	0.00 - 14.73	14.73 - 21.19	21.19 - 30.01	30.01 - 39.19	39.19 - 100.00
English Language Arts 6	Acceptable Standard	0.00 - 67.95	67.95 - 78.40	78.40 - 86.09	86.09 - 91.37	91.37 - 100.00
	Standard of Excellence	0.00 - 6.83	6.83 - 11.65	11.65 - 17.36	17.36 - 22.46	22.46 - 100.00
French Language Arts 6	Acceptable Standard	0.00 - 41.69	41.69 - 73.54	73.54 - 92.32	92.32 - 97.93	97.93 - 100.00
	Standard of Excellence	0.00 - 2.72	2.72 - 8.13	8.13 - 15.29	15.29 - 23.86	23.86 - 100.00
Mathematics 6	Acceptable Standard	0.00 - 63.91	63.91 - 70.73	70.73 - 79.61	79.61 - 88.67	88.67 - 100.00
	Standard of Excellence	0.00 - 8.53	8.53 - 11.31	11.31 - 18.13	18.13 - 25.17	25.17 - 100.00
Science 6	Acceptable Standard	0.00 - 60.36	60.36 - 78.51	78.51 - 86.46	86.46 - 90.64	90.64 - 100.00
	Standard of Excellence	0.00 - 11.74	11.74 - 17.42	17.42 - 25.34	25.34 - 34.31	34.31 - 100.00
Social Studies 6	Acceptable Standard	0.00 - 58.97	58.97 - 68.15	68.15 - 76.62	76.62 - 83.55	83.55 - 100.00
	Standard of Excellence	0.00 - 7.30	7.30 - 12.45	12.45 - 19.08	19.08 - 30.09	30.09 - 100.00
English Language Arts 9	Acceptable Standard	0.00 - 63.55	63.55 - 75.66	75.66 - 83.70	83.70 - 90.27	90.27 - 100.00
	Standard of Excellence	0.00 - 5.96	5.96 - 9.43	9.43 - 14.72	14.72 - 20.46	20.46 - 100.00
English Lang Arts 9 KAE	Acceptable Standard	0.00 - 29.97	29.97 - 53.86	53.86 - 76.19	76.19 - 91.85	91.85 - 100.00
	Standard of Excellence	0.00 - 0.00	0.00 - 0.30	0.30 - 10.00	10.00 - 20.31	20.31 - 100.00
French Language Arts 9	Acceptable Standard	0.00 - 67.59	67.59 - 81.33	81.33 - 92.06	92.06 - 97.26	97.26 - 100.00
	Standard of Excellence	0.00 - 1.67	1.67 - 6.81	6.81 - 17.11	17.11 - 28.68	28.68 - 100.00
Mathematics 9	Acceptable Standard	0.00 - 52.42	52.42 - 60.73	60.73 - 73.88	73.88 - 78.00	78.00 - 100.00
	Standard of Excellence	0.00 - 8.18	8.18 - 12.49	12.49 - 18.10	18.10 - 24.07	24.07 - 100.00
Mathematics 9 KAE	Acceptable Standard	0.00 - 28.14	28.14 - 53.85	53.85 - 75.83	75.83 - 94.44	94.44 - 100.00
	Standard of Excellence	0.00 - 0.00	0.00 - 6.07	6.07 - 20.43	20.43 - 31.67	31.67 - 100.00
Science 9	Acceptable Standard	0.00 - 50.57	50.57 - 60.14	60.14 - 72.50	72.50 - 76.89	76.89 - 100.00
	Standard of Excellence	0.00 - 3.39	3.39 - 6.71	6.71 - 11.81	11.81 - 15.85	15.85 - 100.00
Science 9 KAE	Acceptable Standard	0.00 - 38.75	38.75 - 59.30	59.30 - 78.33	78.33 - 87.58	87.58 - 100.00
	Standard of Excellence	0.00 - 0.00	0.00 - 7.47	7.47 - 21.41	21.41 - 40.82	40.82 - 100.00
Social Studies 9	Acceptable Standard	0.00 - 56.26	56.26 - 62.27	62.27 - 74.04	74.04 - 79.85	79.85 - 100.00
	Standard of Excellence	0.00 - 10.03	10.03 - 12.78	12.78 - 19.76	19.76 - 24.03	24.03 - 100.00
Social Studies 9 KAE	Acceptable Standard	0.00 - 38.79	38.79 - 53.82	53.82 - 72.42	72.42 - 84.88	84.88 - 100.00
	Standard of Excellence	0.00 - 0.00	0.00 - 5.71	5.71 - 17.19	17.19 - 36.26	36.26 - 100.00

Notes:

The range of values at each evaluation level is interpreted as greater than or equal to the lower value, and less than the higher value. For the Very High evaluation level, values range from greater than or equal to the lower value to 100%.

Please note that participation in Grade 9 Provincial Achievement Tests was substantially impacted by the flooding in June 2013. Caution should be used when interpreting trends over time for the province and those school authorities affected by the floods

Achievement Evaluation is not calculated for courses that do not have sufficient data available, either due to too few jurisdictions offering the course or because of changes in tests.

Improvement Table

For each jurisdiction, improvement evaluation consists of comparing the Current Year result for each measure with the previous three-year average. A chi-square statistical test is used to determine the significance of the improvement. This test takes into account the size of the jurisdiction in the calculation to make improvement evaluation fair across jurisdictions of different sizes.

The table below shows the definition of the 5 improvement evaluation levels based upon the chi-square result.

Evaluation Category	Chi-Square Range
Declined Significantly	3.84 + (current < previous 3-year average)
Declined	1.00 - 3.83 (current < previous 3-year average)
Maintained	less than 1.00
Improved	1.00 - 3.83 (current > previous 3-year average)
Improved Significantly	3.84 + (current > previous 3-year average)

Overall Evaluation Table

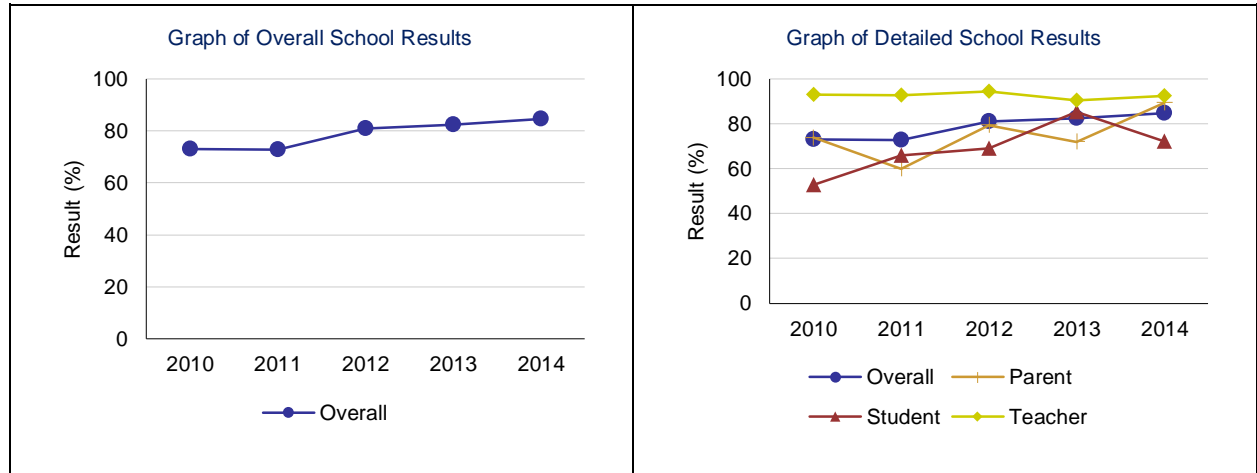
The overall evaluation combines the Achievement Evaluation and the Improvement Evaluation. The table below illustrates how the Achievement and Improvement evaluations are combined to get the overall evaluation.

	Achievement				
	Very High	High	Intermediate	Low	Very Low
Improved Significantly	Excellent	Good	Good	Good	Acceptable
Improved	Excellent	Good	Good	Acceptable	Issue
Maintained	Excellent	Good	Acceptable	Issue	Concern
Declined	Good	Acceptable	Issue	Issue	Concern
Declined Significantly	Acceptable	Issue	Issue	Concern	Concern

Citizenship – Measure Details

Percentage of teachers, parents and students who are satisfied that students model the characteristics of active citizenship.

	School					Authority					Province				
	2010	2011	2012	2013	2014	2010	2011	2012	2013	2014	2010	2011	2012	2013	2014
Overall	73.1	72.8	80.9	82.5	84.7	75.1	73.8	73.8	73.0	74.7	81.4	81.9	82.5	83.4	83.4
Teacher	92.9	92.6	94.5	90.4	92.4	91.4	87.2	86.6	83.3	84.4	93.0	92.7	93.1	93.6	93.8
Parent	73.8	60.0	79.4	71.9	89.4	68.4	69.0	69.2	70.1	75.4	78.5	78.6	79.4	80.3	81.9
Student	52.8	65.8	68.9	85.2	72.2	65.4	65.4	65.7	65.8	64.3	72.7	74.5	75.0	76.2	74.5

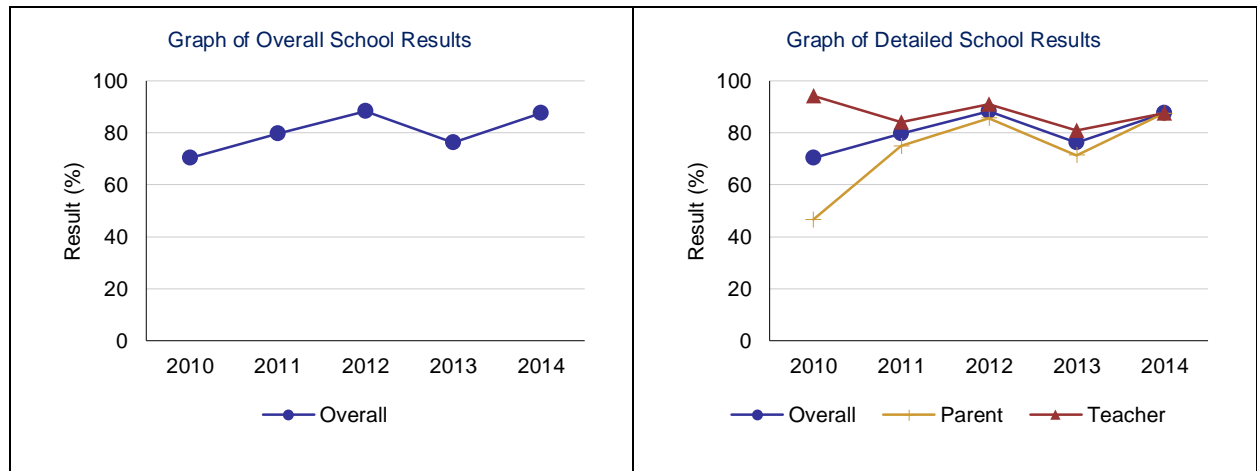


Note: Data values have been suppressed where the number of students or respondents is less than 6. Suppression is marked with an asterisk (*). Survey results for the province and some school authorities were impacted by an increase in the number of students responding to the survey through the introduction of the Tell THEM From ME survey tool in 2014.

Work Preparation – Measure Details

Percentage of teachers and parents who agree that students are taught attitudes and behaviours that will make them successful at work when they finish school.

	School					Authority					Province				
	2010	2011	2012	2013	2014	2010	2011	2012	2013	2014	2010	2011	2012	2013	2014
Overall	70.4	79.6	88.3	76.2	87.5	72.9	73.8	69.3	69.7	72.5	79.9	80.1	79.7	80.3	81.2
Teacher	94.1	84.2	90.9	81.0	87.5	90.0	82.2	84.0	80.5	80.5	90.0	89.6	89.5	89.4	89.3
Parent	46.7	75.0	85.7	71.4	87.5	55.9	65.5	54.6	59.0	64.5	69.8	70.6	69.9	71.1	73.1

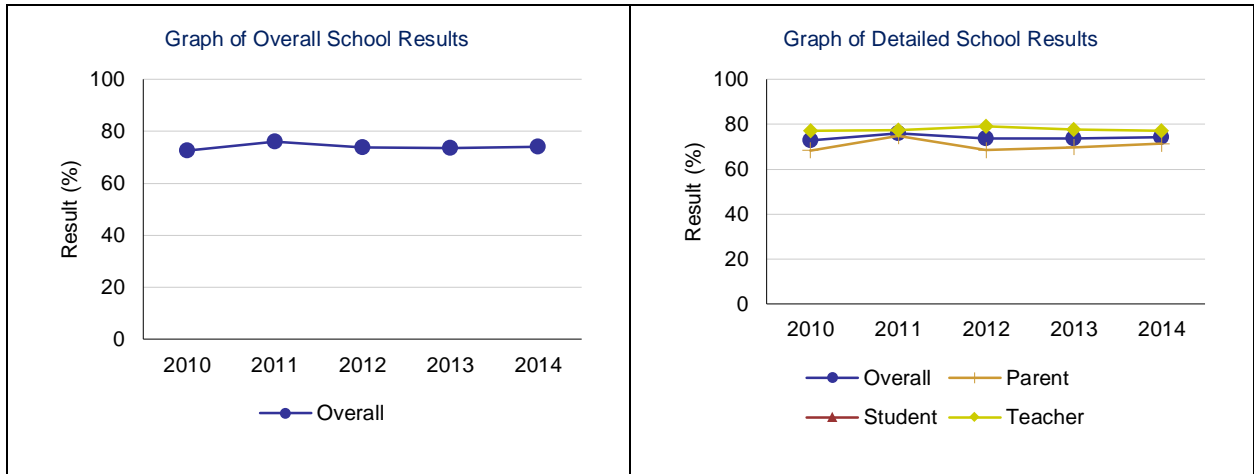


Note: Data values have been suppressed where the number of students or respondents is less than 6. Suppression is marked with an asterisk (*).

Program of Studies – Measure Details

Percentage of teachers, parents and students satisfied with the opportunity for students to receive a broad program of studies including fine arts, career, technology, and health and physical education.

	School					Authority					Province				
	2010	2011	2012	2013	2014	2010	2011	2012	2013	2014	2010	2011	2012	2013	2014
Overall	72.7	76.1	73.8	73.7	74.2	71.9	75.2	71.9	72.9	72.1	80.5	80.9	80.7	81.5	81.3
Teacher	77.2	77.5	79.1	77.6	77.0	79.0	82.0	79.9	80.9	78.4	87.7	87.6	87.3	87.9	87.5
Parent	68.3	74.7	68.5	69.8	71.4	69.6	72.8	69.5	71.3	72.5	78.0	78.3	78.1	78.9	79.9
Student	n/a	n/a	n/a	n/a	n/a	67.1	70.8	66.1	66.4	65.4	75.9	76.9	76.9	77.8	76.6

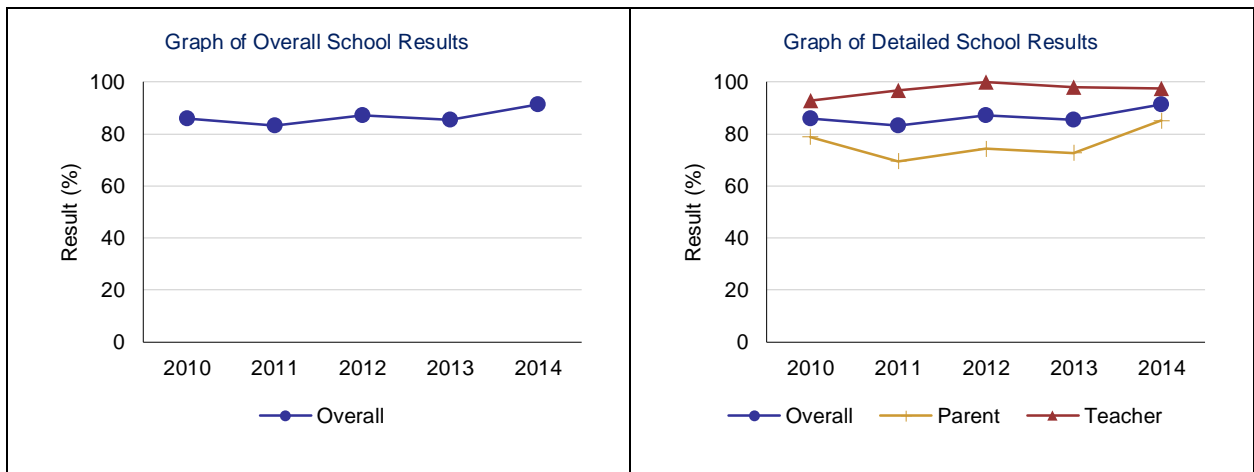


Note: Data values have been suppressed where the number of students or respondents is less than 6. Suppression is marked with an asterisk (*). Survey results for the province and some school authorities were impacted by an increase in the number of students responding to the survey through the introduction of the Tell THEM From ME survey tool in 2014.

Parental Involvement – Measure Details

Percentage of teachers and parents satisfied with parental involvement in decisions about their child's education.

	School					Authority					Province				
	2010	2011	2012	2013	2014	2010	2011	2012	2013	2014	2010	2011	2012	2013	2014
Overall	85.8	83.2	87.1	85.4	91.3	76.8	74.8	73.9	76.0	80.1	80.0	79.9	79.7	80.3	80.6
Teacher	92.9	96.8	100.0	98.1	97.5	88.6	86.3	85.5	85.0	87.2	88.6	88.1	88.0	88.5	88.0
Parent	78.8	69.5	74.3	72.7	85.1	65.0	63.2	62.3	66.9	73.0	71.3	71.7	71.4	72.2	73.1

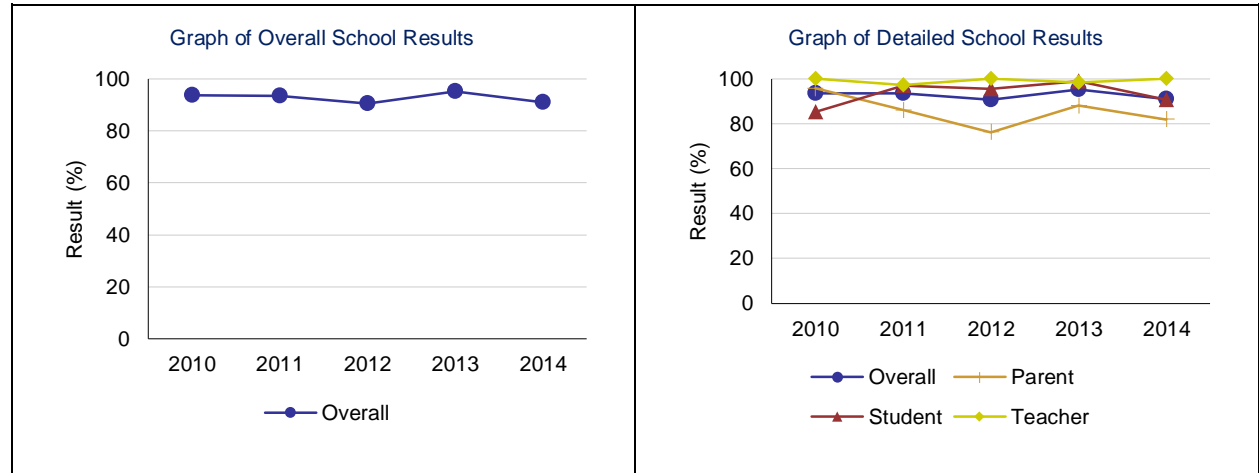


Note: Data values have been suppressed where the number of students or respondents is less than 6. Suppression is marked with an asterisk (*). Survey results for the province and some school authorities were impacted by an increase in the number of students responding to the survey through the introduction of the Tell THEM From ME survey tool in 2014.

Education Quality – Measure Details

Percentage of teachers, parents and students satisfied with the overall quality of basic education.

	School					Authority					Province				
	2010	2011	2012	2013	2014	2010	2011	2012	2013	2014	2010	2011	2012	2013	2014
Overall	93.7	93.5	90.6	95.2	90.9	86.2	85.1	84.9	83.4	85.2	89.2	89.4	89.4	89.8	89.2
Teacher	100.0	97.4	100.0	98.4	100.0	95.1	93.7	93.2	90.9	91.2	95.6	95.5	95.4	95.7	95.5
Parent	95.8	86.1	76.2	88.1	81.9	78.9	78.5	77.7	77.5	82.8	83.9	84.2	84.2	84.9	84.7
Student	85.2	96.9	95.6	99.0	90.7	84.5	83.0	83.8	81.8	81.5	88.2	88.5	88.6	88.7	87.3

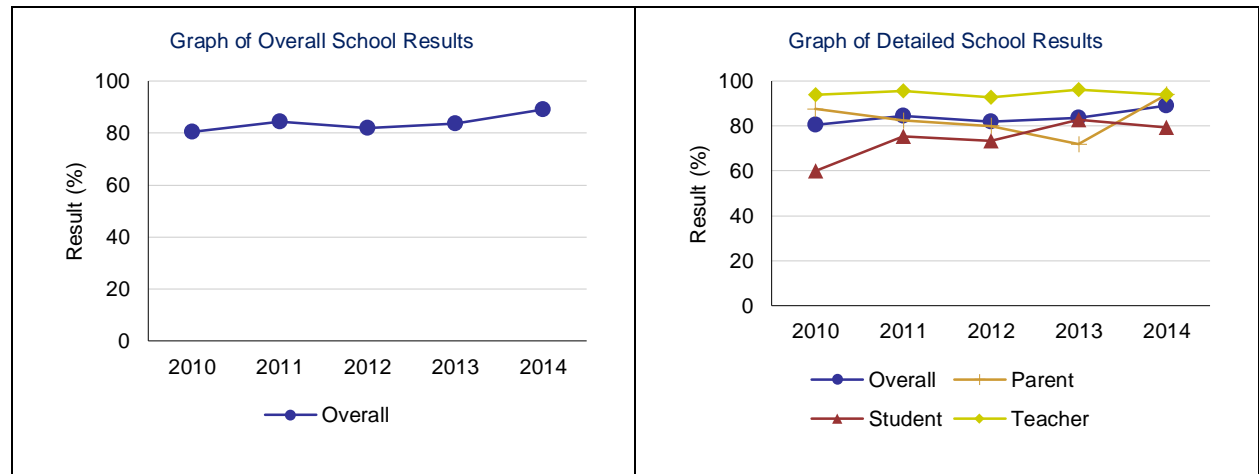


Note: Data values have been suppressed where the number of students or respondents is less than 6. Suppression is marked with an asterisk (*). Survey results for the province and some school authorities were impacted by an increase in the number of students responding to the survey through the introduction of the Tell THEM From ME survey tool in 2014.

Safe and Caring – Measure Details

Percentage of teacher, parent and student agreement that: students are safe at school, are learning the importance of caring for others, are learning respect for others and are treated fairly in school.

	School					Authority					Province				
	2010	2011	2012	2013	2014	2010	2011	2012	2013	2014	2010	2011	2012	2013	2014
Overall	80.5	84.5	82.0	83.6	89.1	83.2	83.1	82.6	82.1	84.7	87.6	88.1	88.6	89.0	89.1
Teacher	94.0	95.7	92.7	96.2	93.8	92.1	91.5	90.4	90.0	91.6	94.4	94.5	94.8	95.0	95.3
Parent	87.5	82.5	80.0	71.9	94.0	80.6	80.2	80.4	79.8	86.0	86.1	86.6	87.4	87.8	88.9
Student	60.0	75.3	73.3	82.8	79.5	76.8	77.7	77.0	76.4	76.5	82.2	83.3	83.7	84.2	83.1

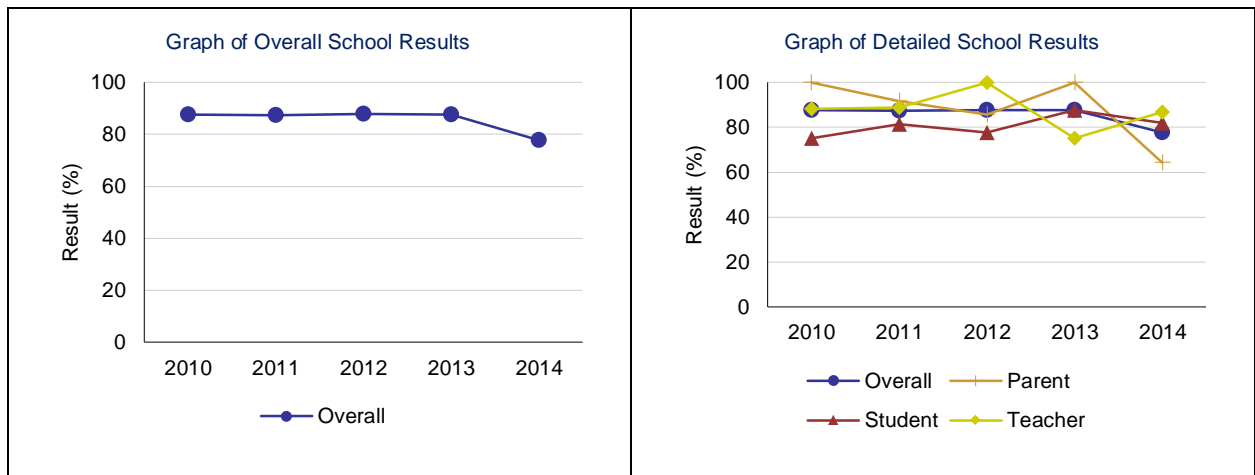


Note: Data values have been suppressed where the number of students or respondents is less than 6. Suppression is marked with an asterisk (*). Survey results for the province and some school authorities were impacted by an increase in the number of students responding to the survey through the introduction of the Tell THEM From ME survey tool in 2014.

School Improvement – Measure Details

Percentage of teachers, parents and students indicating that their school and schools in their jurisdiction have improved or stayed the same the last three years.

	School					Authority					Province				
	2010	2011	2012	2013	2014	2010	2011	2012	2013	2014	2010	2011	2012	2013	2014
Overall	87.7	87.3	87.8	87.6	77.7	76.5	75.9	73.1	68.8	73.3	79.9	80.1	80.0	80.6	79.8
Teacher	88.2	88.9	100.0	75.0	86.7	77.2	76.4	77.1	68.8	74.8	80.8	80.1	81.1	80.9	81.3
Parent	100.0	91.7	85.7	100.0	64.3	74.7	73.6	68.5	69.3	74.4	77.0	77.3	76.2	77.9	77.0
Student	75.0	81.3	77.8	87.8	82.1	77.6	77.5	73.8	68.4	70.7	81.8	82.9	82.7	82.9	81.2



Note: Data values have been suppressed where the number of students or respondents is less than 6. Suppression is marked with an asterisk (*). Survey results for the province and some school authorities were impacted by an increase in the number of students responding to the survey through the introduction of the Tell THEM From ME survey tool in 2014.