



# AURORA ELEMENTARY SCHOOL

## ANNUAL EDUCATION RESULTS REPORT

**October, 2014**

*Aurora Elementary*  
3901 -55 Ave. Drayton Valley, AB T7A  
1N9 Phone 780-542-9355 Fax 780-542-  
7315  
*Creating Powerful Learning Environments*



**A-ROAR-A,**

**the lion, is our mascot.**

**MISSION STATEMENT:**

**To provide the best well-rounded education to the Aurora School community within a caring environment.**

---

## About Aurora



**Aurora is a K-6 school of approximately 390 students. It was built in 1992. We are located in Drayton Valley, Alberta, 100 km. southwest of Edmonton. Our school division is Wild Rose, whose central office is located in Rocky Mountain House. Our special programs include: Aurora Watch, after school P.E., hot lunch program, annual concerts, monthly assemblies, after school care, choirs, cultural performances, daily P.E., cooking club, archery, enrichment, house leagues, gr. 5 outdoor education, reading expedition, Safe & Caring Schools, French program, after school science club, annual speech competition, running/walking club, and study skills.**

## School Plan

### MISSION STATEMENT

To provide the best well-rounded education to the Aurora School community within a caring environment.

### VALUES

Our three decision making filters (in order)

#### SAFE & CARING

- a place where all children feel accepted by everyone
- a family atmosphere promoting enjoyment of learning by everyone
- staff friendliness and high staff morale
- clear, strong, consistent discipline procedures
- safe, clean, facility and grounds

#### LEARNING

- involved parents and an effective School Council
- a broad program exposing students to a variety of learning opportunities (involving Multiple Intelligences) to promote emotional, academic, social, and physical well-being
- high academic standards revolving around literacy and numeracy
- strong, collaborative school leadership
- effective, focused Professional Learning groups
- enrichment opportunities for students to stretch themselves within Multiple Intelligences

#### FUN

- regular recreational activities for everyone
- regular opportunities to laugh together

## THE AURORA WAY

**A- Always treat others as you would like to be treated**

**U- Use proper manners and be polite**

**R- Respect others, the environment and property**

**O- Openness and honesty**

**R- Responsible and trustworthy behavior**

**A- A place where all people feel accepted**

**W- Work to the best of your ability**

**A- A safe and caring school**

**Y- You can make it happen!**

# AURORA ELEMENTARY SCHOOL STUDENT, STAFF, AND VOLUNTEER CODE OF CONDUCT



**1) I have the RIGHT to learn in this school. It is my RESPONSIBILITY to be prepared to learn.**

**2) I have the RIGHT to hear and be heard. It is my RESPONSIBILITY to listen and speak in appropriate and acceptable school language.**

**3) I have the RIGHT to be respected in this school. It is my RESPONSIBILITY not to hurt the feelings of others.**

**4) I have the RIGHT to be safe in this school. It is my RESPONSIBILITY not to threaten or physically harm anyone.**

**5) I have a RIGHT to my own personal space. It is my RESPONSIBILITY to respect the personal property and space of others.**

**6) I have a RIGHT to assistance and support in learning self-control. It is my RESPONSIBILITY to practice self-control and ask for assistance when necessary.**

*Aurora Elementary*

3901 -55 Ave. Drayton Valley, AB T7A  
1N9 Phone 780-542-9355 Fax 780-542-  
7315

*Creating Powerful Learning Environments*

**Combined 2014 Accountability Pillar Overall Summary**

Measure Category	Measure Category Evaluation	Measure	Aurora Elementary School			Alberta			Measure Evaluation		
			Current Result	Prev Year Result	Prev 3 Year Average	Current Result	Prev Year Result	Prev 3 Year Average	Achievement	Improvement	Overall
Safe and Caring Schools	Excellent	Safe and Caring	92.3	87.4	88.9	89.1	89.0	88.6	Very High	Maintained	Excellent
Student Learning Opportunities	n/a	Program of Studies	85.3	82.7	84.6	81.3	81.5	81.1	Very High	Maintained	Excellent
		Education Quality	88.2	92.4	92.3	89.2	89.8	89.5	High	Declined	Acceptable
		Drop Out Rate	n/a	n/a	n/a	3.3	3.5	3.6	n/a	n/a	n/a
		High School Completion Rate (3 yr)	n/a	n/a	n/a	74.9	74.8	73.8	n/a	n/a	n/a
Student Learning Achievement (Grades K-9)	Good	PAT: Acceptable	85.4	86.8	86.2	74.0	75.3	75.5	High	Maintained	Good
		PAT: Excellence	17.0	10.7	16.9	19.0	19.1	19.6	Intermediate	Maintained	Acceptable
Student Learning Achievement (Grades 10-12)	n/a	Diploma: Acceptable	n/a	n/a	n/a	85.4	84.2	83.4	n/a	n/a	n/a
		Diploma: Excellence	n/a	n/a	n/a	21.0	19.5	19.1	n/a	n/a	n/a
		Diploma Exam Participation Rate (4+ Exams)	n/a	n/a	n/a	50.5	56.6	55.9	n/a	n/a	n/a
		Rutherford Scholarship Eligibility Rate (Revised)	n/a	n/a	n/a	60.9	61.3	60.8	n/a	n/a	n/a
Preparation for Lifelong Learning, World of Work, Citizenship	n/a	Transition Rate (6 yr)	n/a	n/a	n/a	59.2	59.5	59.1	n/a	n/a	n/a
		Work Preparation	81.3	82.9	74.8	81.2	80.3	80.0	High	Maintained	Good
		Citizenship	90.1	85.8	86.5	83.4	83.4	82.6	Very High	Maintained	Excellent
Parental Involvement	Excellent	Parental Involvement	84.6	85.2	79.5	80.6	80.3	80.0	Very High	Maintained	Excellent
Continuous Improvement	Excellent	School Improvement	88.5	81.3	83.8	79.8	80.6	80.2	Very High	Improved	Excellent

Notes:

1. Aggregated PAT results are based upon a weighted average of percent meeting standards (Acceptable, Excellence). The weights are the number of students enrolled in each course. Courses included: English Language Arts (Grades 6, 9, 9 KAE), Français (Grades 6, 9), French Language Arts (Grades 6, 9), Mathematics 9 KAE, Science (Grades 6, 9, 9 KAE), Social Studies (Grades 6, 9, 9 KAE). Grade 3 results were not included due to the introduction of the Student Learning Assessment Pilot.
2. Aggregated Diploma results are a weighted average of percent meeting standards (Acceptable, Excellence) on Diploma Examinations. The weights are the number of students writing the Diploma Examination for each course. Courses included: English Language Arts 30-1, English Language Arts 30-2, French Language Arts 30-1, Français 30-1, Chemistry 30, Physics 30, Biology 30, Science 30, Social Studies 30-1, Social Studies 30-2.
3. The subsequent pages include evaluations for each performance measure. If jurisdictions desire not to present this information for each performance measure in the subsequent pages, please include a reference to this overall summary page for each performance measure.
4. Data values have been suppressed where the number of students or respondents is less than 6. Suppression is marked with an asterisk (\*).
5. Please note that participation in Diploma Examinations and Grade 9 Provincial Achievement Tests was impacted by the flooding in June 2013. Caution should be used when interpreting trends over time for the province and those school authorities affected by the floods.
6. Survey results for the province and some school authorities were impacted by an increase in the number of students responding to the survey through the introduction of the Tell THEM From ME survey tool in 2014.



**Goal One: An excellent start to learning**

**Outcome:** *Children are reaching emotional, social, intellectual and physical development milestones and are ready for school.*

- There are no required performance measures for this goal. Schools are encouraged to incorporate early development data available at the local level.

<p><b>Comment on Results</b></p> <p><i>WRSB recognizes that children have been coming to kindergarten at many different levels of emotional, social, intellectual, and physical development. Schools work together with preschools to help identify and provide programming for those students who are developmentally delayed.</i></p>
<p><b>Strategies</b></p> <ul style="list-style-type: none"> <li>- PUF programming is available for students beginning at 3 years old in playschools.</li> <li>- Community study's involving kindergarten teachers to help identify students prior to kindergarten entry. Community wide data is available.</li> <li>- Full day/every day kindergarten provided at all school with a play based focus for those students that need to close the gap and enhance the children's overall development.</li> </ul>

**Goal Two: Success for Every Student**

**Outcome:** *Students achieve student learning outcomes.*

<p><b>Comment on Results</b></p>
<p><b>Strategies</b></p>

**Outcome:** *Students demonstrate proficiency in literacy and numeracy.*

Performance Measure	Results (in percentages)					Target	Evaluation			Targets		
	2010	2011	2012	2013	2014	2014	Achievement	Improvement	Overall	2015	2016	2017
Overall percentage of students in Grades 6 and 9 who achieved the acceptable standard on Provincial Achievement Tests (overall cohort results).	93.6	85.7	86.1	86.8	85.4	94	High	Maintained	Good	94	95	96
Overall percentage of students in Grades 6 and 9 who achieved the standard of excellence on Provincial	26.2	15.0	25.0	10.7	17.0	20	Intermediate	Maintained	Acceptable	20	21	22

Achievement Tests (overall cohort results).												
---	--	--	--	--	--	--	--	--	--	--	--	--

**Comment on Results**

We are very pleased with the number of students who are achieving the acceptable standard. We believe this is a result of hard work and dedication from the staff and the collaborative culture that has been created at Aurora.

Staff will continue to conduct an in-depth PAT analysis to determine areas for improvement. We are happy to see an improvement in our standard of excellence results.

**Strategies**

Teachers will conduct an in-depth PAT analysis of the results and identify areas of strength and areas to improve upon in both meeting and exceeding the standard as well as excelling. We will then create a document for all teachers to access and use in their classrooms.

Staff will brainstorm on ideas such as using exemplars to improve achievement results.

Teachers will continue to focus on literacy and numeracy, primarily in the primary grades.

Teachers will consult in their PLC groups on enrichment strategies to increase the standard of excellence.

- Notes:
1. Aggregated PAT results are based upon a weighted average of percent meeting standards (Acceptable, Excellence). The weights are the number of students enrolled in each course. Courses included: English Language Arts (Grades 6, 9, 9 KAE), Français (Grades 6, 9), French Language Arts (Grades 6, 9), Mathematics 9 KAE, Science (Grades 6, 9, 9 KAE), Social Studies (Grades 6, 9, 9 KAE). Grade 3 results were not included due to the introduction of the Student Learning Assessment Pilot.
  2. Data values have been suppressed where the number of students or respondents is less than 6. Suppression is marked with an asterisk (\*).
  3. Please note that participation in Grade 9 Provincial Achievement Tests was substantially impacted by the flooding in June 2013. Caution should be used when interpreting trends over time for the province and those school authorities affected by the floods.

**Outcome:** *Students demonstrate citizenship and entrepreneurship.*

Performance Measure	Results (in percentages)					Target	Evaluation			Targets		
	2010	2011	2012	2013	2014	2014	Achievement	Improvement	Overall	2015	2016	2017
Percentage of teachers, parents and students who are satisfied that students model the characteristics of active citizenship.	90.2	86.3	87.3	85.8	90.1	90	Very High	Maintained	Excellent	92	93	94
Percentage of teachers and parents who agree that students are taught attitudes and behaviours that will make them successful at work when they finish school.	84.2	70.0	71.4	82.9	81.3	85	High	Maintained	Good	85	86	87

**Comment on Results**

We are very happy to see an improvement on performance measure #1 of close to 5%. We met our goal. We are also happy to be maintaining performance measure #2 after a 10% increase the year prior.

**Strategies**

- We will monitor and measure that students are taught attitudes and behaviors that make them successful at work.
- It is our goal to have students leaving Aurora who are well prepared to take on any challenges that they may face. Through our divisional three pillars initiative, students will gain 21st century learning skills such as collaboration, problem solving, critical thinking, life-long learning, digital literacy, global citizenship, and taking responsibility for their learning.

Note: Data values have been suppressed where the number of students or respondents is less than 6. Suppression is marked with an asterisk (\*).  
 Survey results for the province and some school authorities were impacted by an increase in the number of students responding to the survey through the introduction of the Tell THEM From ME survey tool in 2014.

**Goal Three: Quality teaching and school leadership**

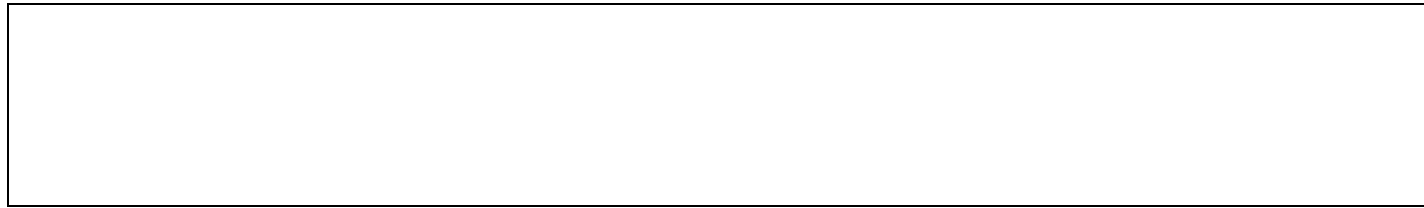
*Outcome: Teacher preparation and professional growth focus on the competencies needed to help students learn. Effective learning and teaching is achieved through collaborative leadership.*

Performance Measure	Results (in percentages)					Target	Evaluation			Targets		
	2010	2011	2012	2013	2014	2014	Achievement	Improvement	Overall	2015	2016	2017
Percentage of teachers, parents and students satisfied with the opportunity for students to receive a broad program of studies including fine arts, career, technology, and health and physical education.	90.1	86.9	84.1	82.7	85.3	86	Very High	Maintained	Excellent	87	88	89

**Comment on Results**

*We are very pleased with these results which are a reflection of all the hard work that teachers have been putting in. This is also a result of the Professional Development opportunities provided by our school district.*

- Strategies**
- School based PD days to focus on teacher collaboration in early learning and the three district initiatives. Teachers will meet in both grade level specific groupings as well as district wide groupings. Opportunity for google hangouts and video conferencing will be made available.
  - Teachers will be provided with PLC group meetings once a week to collaborate with grade level teachers as well as vertical meetings with adjacent grade level teachers.
  - PD opportunities provided at staff meetings.
  - Partnership formed with another elementary school in town to focus on inquiry based learning.
  - Bring in experts to work with staff in inquiry based learning and SMART learning pillars.
    - Teachers will work collaboratively to develop an inquiry-based project at both the school level and divisional level. The projects will be revisited and assessed throughout the year.



Note: Data values have been suppressed where the number of students or respondents is less than 6. Suppression is marked with an asterisk (\*).

Survey results for the province and some school authorities were impacted by an increase in the number of students responding to the survey through the introduction of the Tell THEM From ME survey tool in 2014.

### Goal Four: Engaged and effective governance

*Outcome: The education system demonstrates collaboration and engagement.*

Performance Measure	Results (in percentages)					Target 2014	Evaluation			Targets		
	2010	2011	2012	2013	2014		Achievement	Improvement	Overall	2015	2016	2017
Percentage of teachers and parents satisfied with parental involvement in decisions about their child's education.	84.1	73.7	79.6	85.2	84.6	86	Very High	Maintained	Excellent	87	88	89
Percentage of teachers, parents and students satisfied with the overall quality of basic education.	96.6	92.2	92.3	92.4	88.2	94	High	Declined	Acceptable	94	95	96

#### Comment on Results

We are very pleased with the improvement in the area of parental involvement as this has been a focus of the school administration and staff over the past 3 years. We will continue to keep this as a priority. We are concerned with the decline in the overall quality of education. This is still high, but we will monitor this closely.

#### Strategies

***We will continue to look at ways to increase parental involvement, including collaboration with the PAC. We had a successful movie night, a staff member at PAC meetings, and other issues that recognized the importance of parents as advisors to the principal.***

Note: Data values have been suppressed where the number of students or respondents is less than 6. Suppression is marked with an asterisk (\*).

Survey results for the province and some school authorities were impacted by an increase in the number of students responding to the survey through the introduction of the Tell THEM From ME survey tool in 2014.

*Outcome: Students and communities have access to safe and healthy learning environments.*

Performance Measure	Results (in percentages)					Target	Evaluation			Targets		
	2010	2011	2012	2013	2014	2014	Achievement	Improvement	Overall	2015	2016	2017
Percentage of teacher, parent and student agreement that: students are safe at school, are learning the importance of caring for others, are learning respect for others and are treated fairly in school.	92.3	90.7	88.6	87.4	92.3	90	Very High	Maintained	Excellent	94	95	96
Percentage of teachers, parents and students indicating that their school and schools in their jurisdiction have improved or stayed the same the last three years.	91.4	83.4	86.8	81.3	88.5	87	Very High	Improved	Excellent	90	91	92

**Comment on Results**

We met our target in both areas. Safe and healthy learning environments are the key to our school mission and vision so we are extremely proud of these results.

There is a great deal of time and energy spent developing a safe and caring culture. We will continue to improve in this area.

We have created a school motto called the Aurora Way which promotes a safe and caring school environment through nine guiding principles developed by staff, students and parents. We also have a school song and mascot to support this. Also daily school announcements by the principal help promote this goal.

**Strategies**

Work together with school council and staff to come up with communication strategies to improve the perception of our school which has a very good reputation as a high performing school.

**APPENDIX – Measure Details**

The following pages include tables and graphs that provide detailed data for the performance measures. Schools may include these under each measure/outcome to provide context and help in interpreting the results.

**Provincial Achievement Test Results – Measure Details**

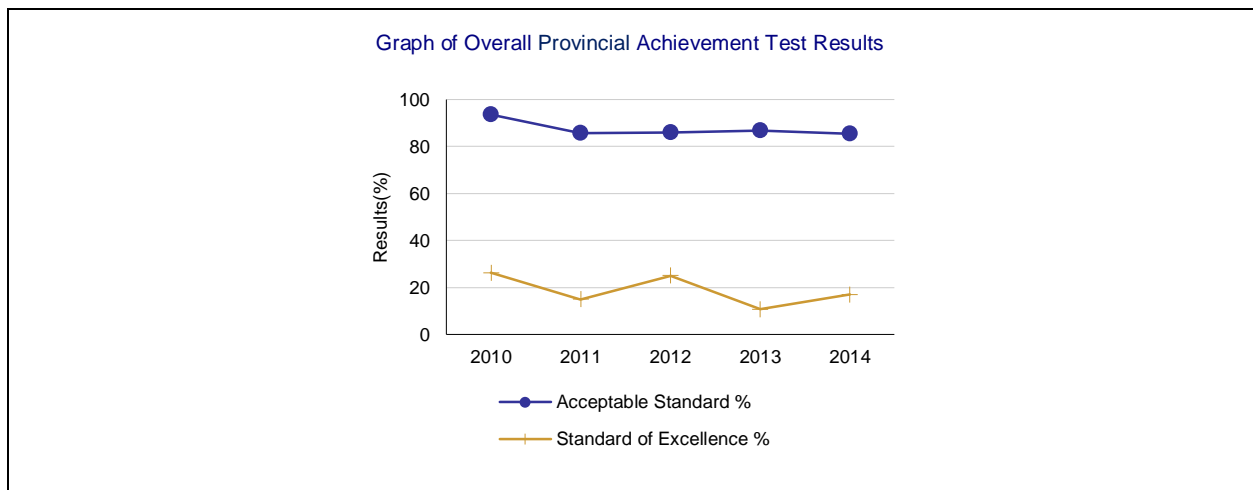
PAT Course by Course Results by Number Enrolled.													
		Results (in percentages)										Target	
		2010		2011		2012		2013		2014		2014	
		A	E	A	E	A	E	A	E	A	E	A	E
English Language Arts 6	School	97.9	21.3	89.8	8.2	89.6	18.8	94.3	7.5	87.7	12.3	90	20
	Authority	83.0	13.1	83.2	9.2	85.1	9.2	86.7	11.9	78.7	8.7		
	Province	83.3	18.9	83.0	18.5	82.7	17.8	82.5	16.3	81.9	17.6		
Mathematics 6	School	n/a	n/a	83.7	6.1	77.1	18.8	73.6	11.3	71.9	12.3	80	20
	Authority	n/a	n/a	73.3	12.3	70.7	9.2	69.5	10.0	69.4	8.5		
	Province	n/a	n/a	73.7	17.8	74.7	16.6	73.0	16.4	73.5	15.4		
Science 6	School	97.9	36.2	87.8	26.5	85.4	31.3	88.7	15.1	84.2	15.8	90	20
	Authority	79.4	22.5	77.4	23.4	79.9	21.3	77.0	17.7	73.2	15.8		
	Province	76.8	26.4	76.2	25.0	77.8	28.2	77.5	25.9	75.9	24.9		
Social Studies 6	School	85.1	21.3	79.6	10.2	83.3	25.0	77.4	9.4	84.2	22.8	90	25
	Authority	71.3	13.1	71.5	11.0	71.8	11.5	72.6	11.4	63.4	8.7		
	Province	71.0	16.4	71.1	18.5	73.2	19.5	72.7	19.0	70.4	16.6		

Note: Data values have been suppressed where the number of students or respondents is less than 6. Suppression is marked with an asterisk (\*).

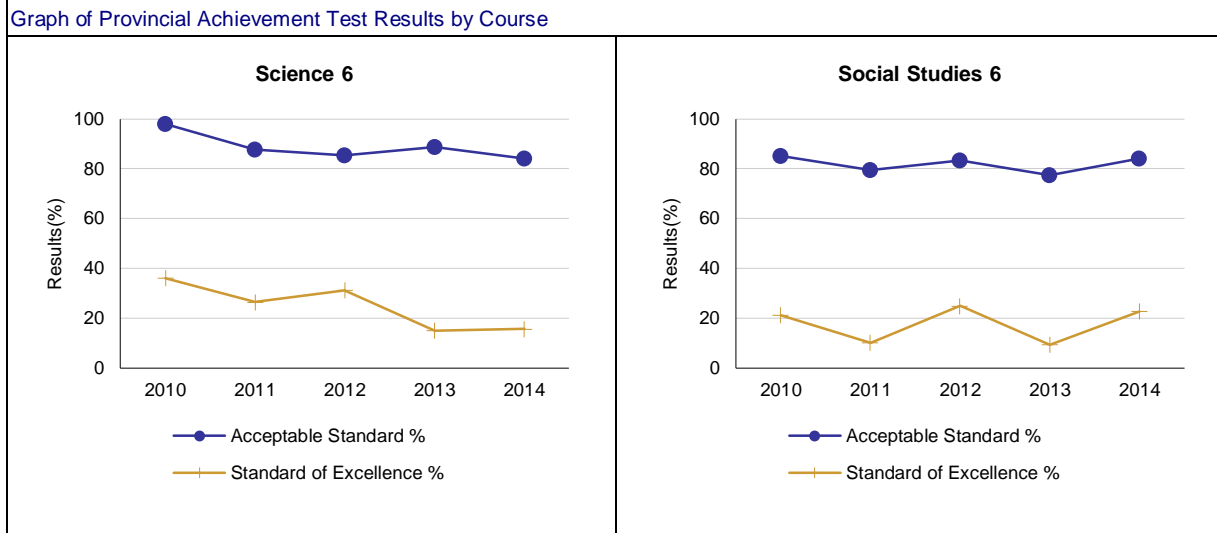
"A" = Acceptable; "E" = Excellence — the percentages achieving the acceptable standard include the percentages achieving the standard of excellence.

Please note that participation in Grade 9 Provincial Achievement Tests was substantially impacted by the flooding in June 2013. Caution should be used when interpreting trends over time for the province and those school authorities affected by the floods.

\*School authorities that do not have students participating in the Grade 3 Provincial Achievement Tests due to their participation in the Student Learning Assessment Pilot in Fall 2014 are not required to include Grade 3 Provincial Achievement Test results in their plans and reports.



Note: Please note that participation in Grade 9 Provincial Achievement Tests was substantially impacted by the flooding in June 2013. Caution should be used when interpreting trends over time for the province and those school authorities affected by the floods.



Note: Data values have been suppressed where the number of students or respondents is less than 6. Suppression is marked with an asterisk (\*).

Please note that participation in Grade 9 Provincial Achievement Tests was substantially impacted by the flooding in June 2013. Caution should be used when interpreting trends over time for the province and those school authorities affected by the floods. [PAT Results Course By Course Summary By Enrolled With Measure Evaluation](#)

Course	Measure	Aurora Elementary School						Alberta				
		Achievement	Improvement	Overall	2014		Prev 3 Yr Avg		2014		Prev 3 Yr Avg	
					N	%	N	%	N	%	N	%
English Language Arts 6	Acceptable Standard	High	Maintained	Good	57	87.7	50	91.2	45,704	81.9	43,581	82.7
	Standard of Excellence	Intermediate	Maintained	Acceptable	57	12.3	50	11.5	45,704	17.6	43,581	17.5
Mathematics 6	Acceptable Standard	Intermediate	Maintained	Acceptable	57	71.9	50	78.1	45,617	73.5	43,599	73.8
	Standard of Excellence	Intermediate	Maintained	Acceptable	57	12.3	50	12.1	45,617	15.4	43,599	17.0
Science 6	Acceptable Standard	Intermediate	Maintained	Acceptable	57	84.2	50	87.3	45,608	75.9	43,551	77.2
	Standard of Excellence	Low	Declined	Issue	57	15.8	50	24.3	45,608	24.9	43,551	26.4
Social Studies 6	Acceptable Standard	Very High	Maintained	Excellent	57	84.2	50	80.1	45,593	70.4	43,540	72.3
	Standard of Excellence	High	Improved	Good	57	22.8	50	14.9	45,593	16.6	43,540	19.0

Note: Data values have been suppressed where the number of students or respondents is less than 6. Suppression is marked with an asterisk (\*).

Achievement Evaluation is not calculated for courses that do not have sufficient data available, either due to too few jurisdictions offering the course or because of changes in tests.

Please note that participation in Grade 9 Provincial Achievement Tests was substantially impacted by the flooding in June 2013. Caution should be used when interpreting trends over time for the province and those school authorities affected by the floods.

\*School authorities that do not have students participating in the Grade 3 Provincial Achievement Tests due to their participation in the Student Learning Assessment Pilot in Fall 2014 are not required to include Grade 3 Provincial Achievement Test results in their plans and reports.

### Measure Evaluation Reference - Achievement Evaluation

Achievement evaluation is based upon a comparison of Current Year data to a set of standards which remain consistent over time. The Standards are calculated by taking the 3 year average of baseline data for each measure across all school jurisdictions and calculating the 5th, 25th, 75th, and 95th percentiles. Once calculated, these standards remain in place from year to year to allow for consistent planning and evaluation.

The table below shows the range of values defining the 5 achievement evaluation levels for each measure.

Course	Measure	Very Low	Low	Intermediate	High	Very High
English Language Arts 6	Acceptable Standard	0.00 - 67.95	67.95 - 78.40	78.40 - 86.09	86.09 - 91.37	91.37 - 100.00
	Standard of Excellence	0.00 - 6.83	6.83 - 11.65	11.65 - 17.36	17.36 - 22.46	22.46 - 100.00
Mathematics 6	Acceptable Standard	0.00 - 63.91	63.91 - 70.73	70.73 - 79.61	79.61 - 88.67	88.67 - 100.00
	Standard of Excellence	0.00 - 8.53	8.53 - 11.31	11.31 - 18.13	18.13 - 25.17	25.17 - 100.00
Science 6	Acceptable Standard	0.00 - 60.36	60.36 - 78.51	78.51 - 86.46	86.46 - 90.64	90.64 - 100.00
	Standard of Excellence	0.00 - 11.74	11.74 - 17.42	17.42 - 25.34	25.34 - 34.31	34.31 - 100.00
Social Studies 6	Acceptable Standard	0.00 - 58.97	58.97 - 68.15	68.15 - 76.62	76.62 - 83.55	83.55 - 100.00
	Standard of Excellence	0.00 - 7.30	7.30 - 12.45	12.45 - 19.08	19.08 - 30.09	30.09 - 100.00

Notes:

The range of values at each evaluation level is interpreted as greater than or equal to the lower value, and less than the higher value. For the Very High evaluation level, values range from greater than or equal to the lower value to 100%.

Please note that participation in Grade 9 Provincial Achievement Tests was substantially impacted by the flooding in June 2013. Caution should be used when interpreting trends over time for the province and those school authorities affected by the floods

Achievement Evaluation is not calculated for courses that do not have sufficient data available, either due to too few jurisdictions offering the course or because of changes in tests. **Improvement Table**

For each jurisdiction, improvement evaluation consists of comparing the Current Year result for each measure with the previous three-year average. A chi-square statistical test is used to determine the significance of the improvement. This test takes into account the size of the jurisdiction in the calculation to make improvement evaluation fair across jurisdictions of different sizes.

The table below shows the definition of the 5 improvement evaluation levels based upon the chi-square result.

Evaluation Category	Chi-Square Range
Declined Significantly	3.84 + (current < previous 3-year average)
Declined	1.00 - 3.83 (current < previous 3-year average)
Maintained	less than 1.00
Improved	1.00 - 3.83 (current > previous 3-year average)
Improved Significantly	3.84 + (current > previous 3-year average)

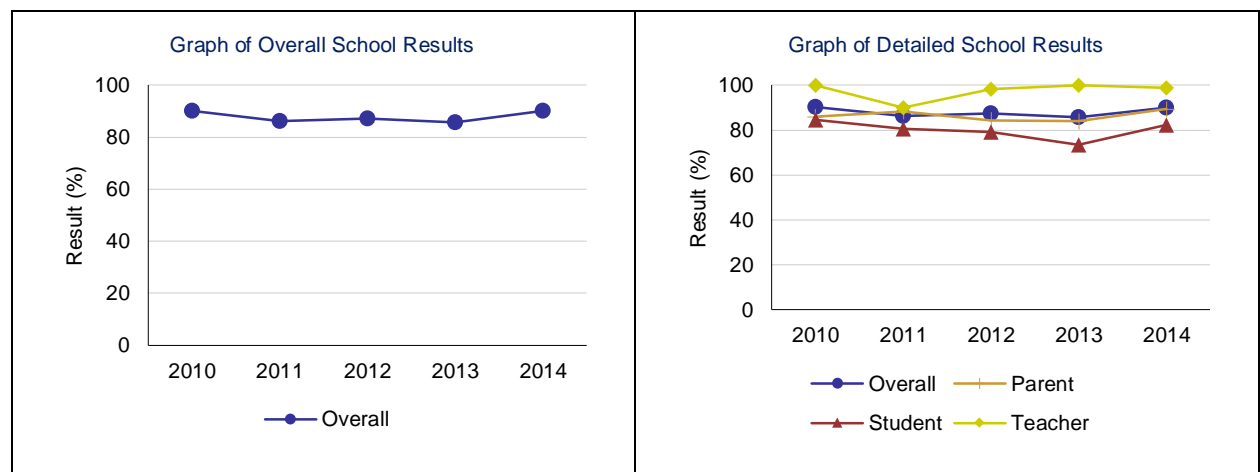
**Overall Evaluation Table**

The overall evaluation combines the Achievement Evaluation and the Improvement Evaluation. The table below illustrates how the Achievement and Improvement evaluations are combined to get the overall evaluation.

	Achievement				
	Very High	High	Intermediate	Low	Very Low
Improved Significantly	Excellent	Good	Good	Good	Acceptable
Improved	Excellent	Good	Good	Acceptable	Issue
Maintained	Excellent	Good	Acceptable	Issue	Concern
Declined	Good	Acceptable	Issue	Issue	Concern
Declined Significantly	Acceptable	Issue	Issue	Concern	Concern

**Citizenship – Measure Details**

Percentage of teachers, parents and students who are satisfied that students model the characteristics of active citizenship.															
	School					Authority					Province				
	2010	2011	2012	2013	2014	2010	2011	2012	2013	2014	2010	2011	2012	2013	2014
Overall	90.2	86.3	87.3	85.8	90.1	75.1	73.8	73.8	73.0	74.7	81.4	81.9	82.5	83.4	83.4
Teacher	100.0	90.0	98.3	100.0	98.8	91.4	87.2	86.6	83.3	84.4	93.0	92.7	93.1	93.6	93.8
Parent	86.0	88.3	84.3	84.0	89.3	68.4	69.0	69.2	70.1	75.4	78.5	78.6	79.4	80.3	81.9
Student	84.5	80.6	79.2	73.5	82.3	65.4	65.4	65.7	65.8	64.3	72.7	74.5	75.0	76.2	74.5



Note: Data values have been suppressed where the number of students or respondents is less than 6. Suppression is marked with an asterisk (\*).

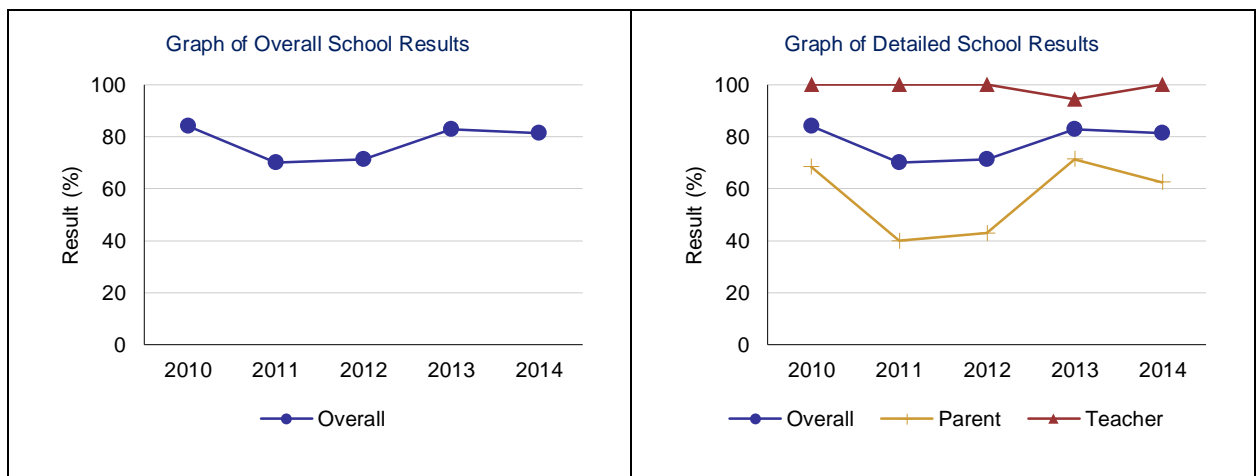


Survey results for the province and some school authorities were impacted by an increase in the number of students responding to the survey through the introduction of the Tell THEM From ME survey tool in 2014.

**Work Preparation – Measure Details**

Percentage of teachers and parents who agree that students are taught attitudes and behaviours that will make them successful at work when they finish school.

	School					Authority					Province				
	2010	2011	2012	2013	2014	2010	2011	2012	2013	2014	2010	2011	2012	2013	2014
Overall	84.2	70.0	71.4	82.9	81.3	72.9	73.8	69.3	69.7	72.5	79.9	80.1	79.7	80.3	81.2
Teacher	100.0	100.0	100.0	94.4	100.0	90.0	82.2	84.0	80.5	80.5	90.0	89.6	89.5	89.4	89.3
Parent	68.4	40.0	42.9	71.4	62.5	55.9	65.5	54.6	59.0	64.5	69.8	70.6	69.9	71.1	73.1

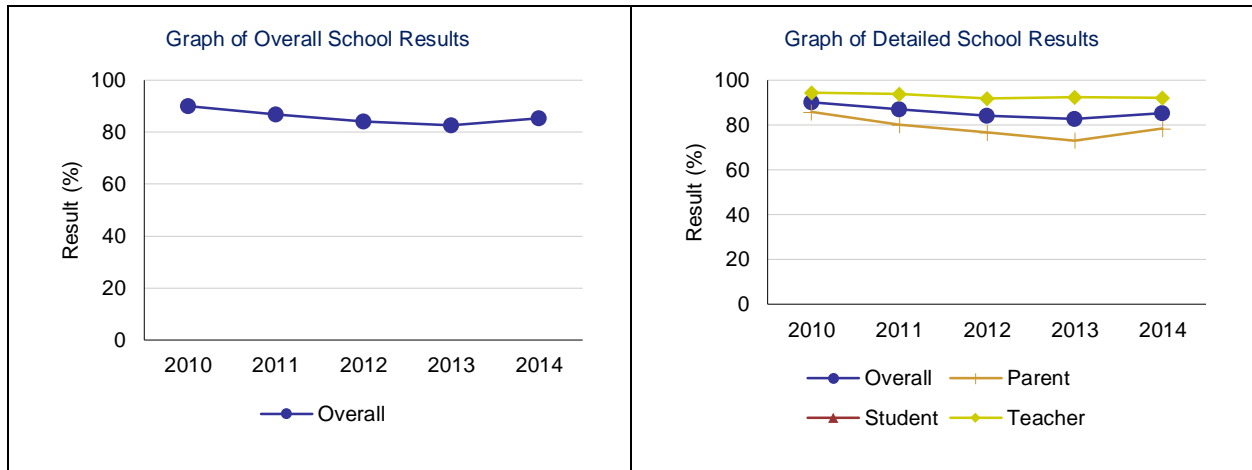


Note: Data values have been suppressed where the number of students or respondents is less than 6. Suppression is marked with an asterisk (\*).

**Program of Studies – Measure Details**

Percentage of teachers, parents and students satisfied with the opportunity for students to receive a broad program of studies including fine arts, career, technology, and health and physical education.

	School					Authority					Province				
	2010	2011	2012	2013	2014	2010	2011	2012	2013	2014	2010	2011	2012	2013	2014
Overall	90.1	86.9	84.1	82.7	85.3	71.9	75.2	71.9	72.9	72.1	80.5	80.9	80.7	81.5	81.3
Teacher	94.4	93.8	91.7	92.3	92.2	79.0	82.0	79.9	80.9	78.4	87.7	87.6	87.3	87.9	87.5
Parent	85.8	80.1	76.6	73.1	78.4	69.6	72.8	69.5	71.3	72.5	78.0	78.3	78.1	78.9	79.9
Student	n/a	n/a	n/a	n/a	n/a	67.1	70.8	66.1	66.4	65.4	75.9	76.9	76.9	77.8	76.6

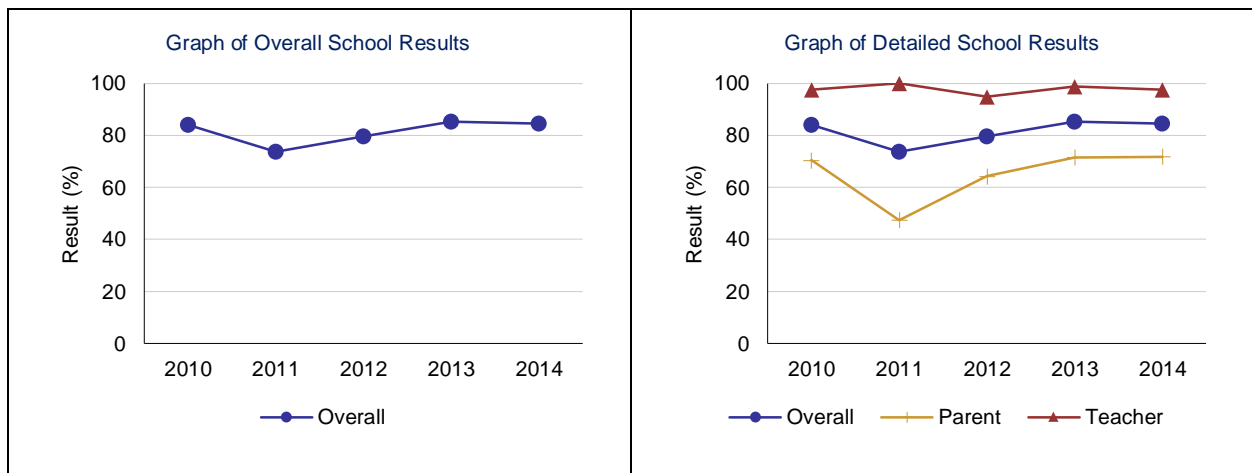


Note: Data values have been suppressed where the number of students or respondents is less than 6. Suppression is marked with an asterisk (\*). Survey results for the province and some school authorities were impacted by an increase in the number of students responding to the survey through the introduction of the Tell THEM From ME survey tool in 2014.

**Parental Involvement – Measure Details**

Percentage of teachers and parents satisfied with parental involvement in decisions about their child's education.

	School					Authority					Province				
	2010	2011	2012	2013	2014	2010	2011	2012	2013	2014	2010	2011	2012	2013	2014
Overall	84.1	73.7	79.6	85.2	84.6	76.8	74.8	73.9	76.0	80.1	80.0	79.9	79.7	80.3	80.6
Teacher	97.7	100.0	94.8	98.9	97.5	88.6	86.3	85.5	85.0	87.2	88.6	88.1	88.0	88.5	88.0
Parent	70.5	47.5	64.3	71.6	71.8	65.0	63.2	62.3	66.9	73.0	71.3	71.7	71.4	72.2	73.1

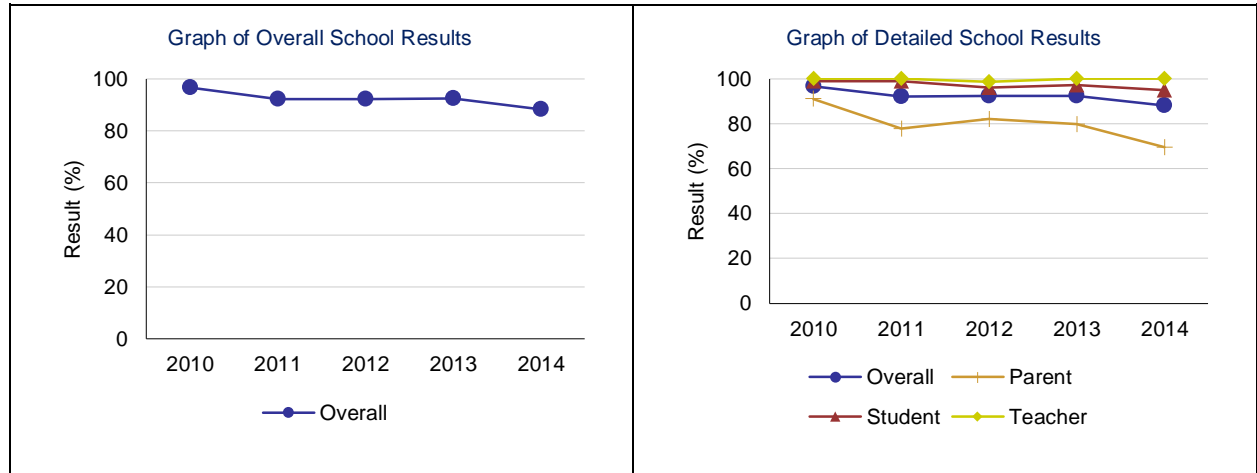


Note: Data values have been suppressed where the number of students or respondents is less than 6. Suppression is marked with an asterisk (\*). Survey results for the province and some school authorities were impacted by an increase in the number of students responding to the survey through the introduction of the Tell THEM From ME survey tool in 2014.

**Education Quality – Measure Details**

Percentage of teachers, parents and students satisfied with the overall quality of basic education.

	School					Authority					Province				
	2010	2011	2012	2013	2014	2010	2011	2012	2013	2014	2010	2011	2012	2013	2014
Overall	96.6	92.2	92.3	92.4	88.2	86.2	85.1	84.9	83.4	85.2	89.2	89.4	89.4	89.8	89.2
Teacher	100.0	100.0	98.6	100.0	100.0	95.1	93.7	93.2	90.9	91.2	95.6	95.5	95.4	95.7	95.5
Parent	91.0	77.8	82.1	79.8	69.6	78.9	78.5	77.7	77.5	82.8	83.9	84.2	84.2	84.9	84.7
Student	98.9	98.9	96.1	97.3	94.9	84.5	83.0	83.8	81.8	81.5	88.2	88.5	88.6	88.7	87.3

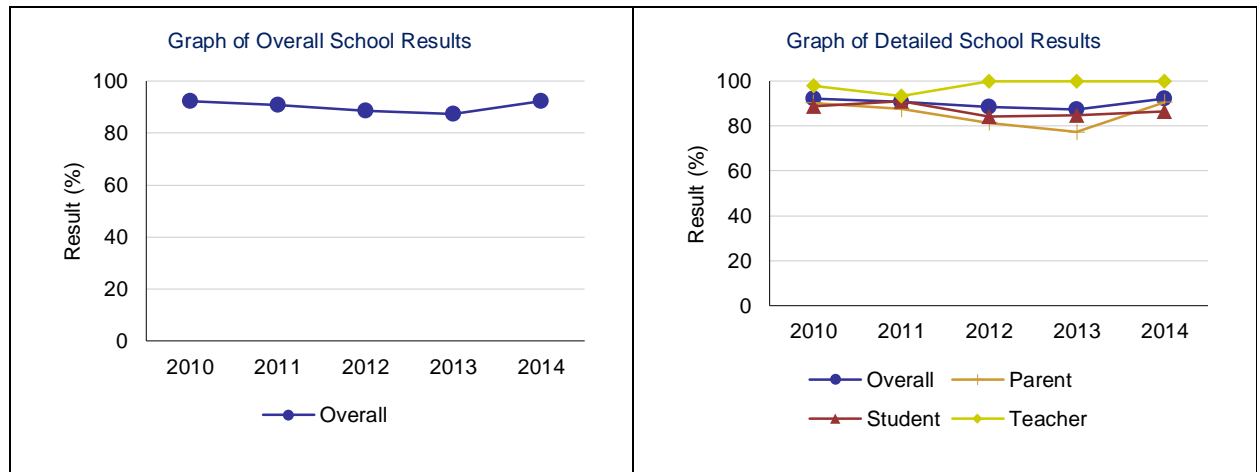


Note: Data values have been suppressed where the number of students or respondents is less than 6. Suppression is marked with an asterisk (\*). Survey results for the province and some school authorities were impacted by an increase in the number of students responding to the survey through the introduction of the Tell THEM From ME survey tool in 2014.

**Safe and Caring – Measure Details**

Percentage of teacher, parent and student agreement that: students are safe at school, are learning the importance of caring for others, are learning respect for others and are treated fairly in school.

	School					Authority					Province				
	2010	2011	2012	2013	2014	2010	2011	2012	2013	2014	2010	2011	2012	2013	2014
Overall	92.3	90.7	88.6	87.4	92.3	83.2	83.1	82.6	82.1	84.7	87.6	88.1	88.6	89.0	89.1
Teacher	97.8	93.3	100.0	100.0	100.0	92.1	91.5	90.4	90.0	91.6	94.4	94.5	94.8	95.0	95.3
Parent	90.3	87.6	81.4	77.3	90.5	80.6	80.2	80.4	79.8	86.0	86.1	86.6	87.4	87.8	88.9
Student	88.9	91.1	84.3	84.9	86.5	76.8	77.7	77.0	76.4	76.5	82.2	83.3	83.7	84.2	83.1

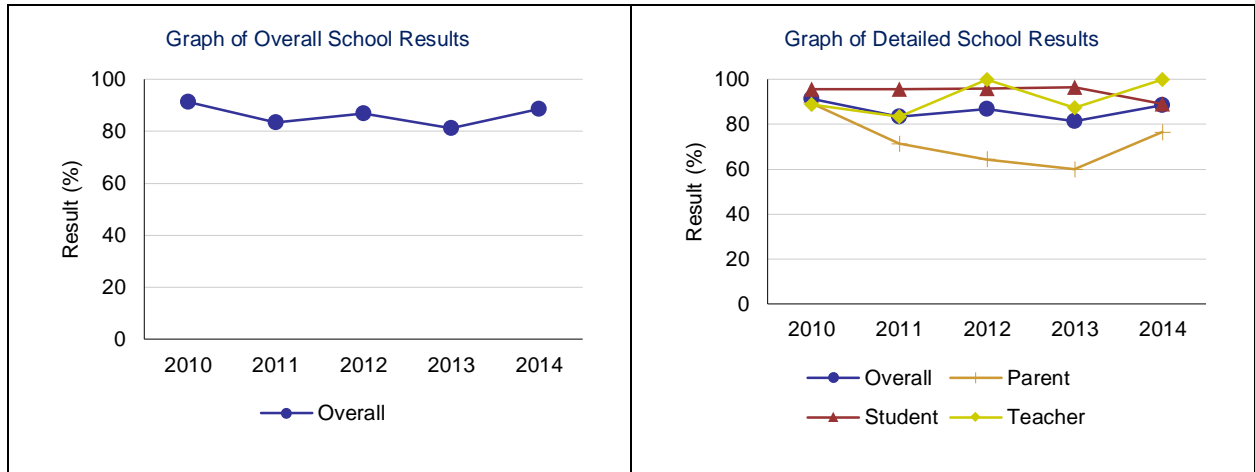


Note: Data values have been suppressed where the number of students or respondents is less than 6. Suppression is marked with an asterisk (\*). Survey results for the province and some school authorities were impacted by an increase in the number of students responding to the survey through the introduction of the Tell THEM From ME survey tool in 2014.

**School Improvement – Measure Details**

Percentage of teachers, parents and students indicating that their school and schools in their jurisdiction have improved or stayed the same the last three years.

	School					Authority					Province				
	2010	2011	2012	2013	2014	2010	2011	2012	2013	2014	2010	2011	2012	2013	2014
Overall	91.4	83.4	86.8	81.3	88.5	76.5	75.9	73.1	68.8	73.3	79.9	80.1	80.0	80.6	79.8
Teacher	88.9	83.3	100.0	87.5	100.0	77.2	76.4	77.1	68.8	74.8	80.8	80.1	81.1	80.9	81.3
Parent	89.5	71.4	64.3	60.0	76.5	74.7	73.6	68.5	69.3	74.4	77.0	77.3	76.2	77.9	77.0
Student	95.7	95.6	96.0	96.4	89.1	77.6	77.5	73.8	68.4	70.7	81.8	82.9	82.7	82.9	81.2



Note: Data values have been suppressed where the number of students or respondents is less than 6. Suppression is marked with an asterisk (\*). Survey results for the province and some school authorities were impacted by an increase in the number of students responding to the survey through the introduction of the Tell THEM From ME survey tool in 2014.