



AURORA ELEMENTARY SCHOOL

ANNUAL EDUCATION RESULTS REPORT



Aurora Elementary

3901 -55 Ave. Drayton Valley, AB T7A 1N9
Phone 780-542-9355 Fax 780-542-7315

Creating Powerful Learning Environments



A-ROAR-A,

the lion, is our mascot.

MISSION STATEMENT:

To provide the best well-rounded education to the Aurora School community within a caring environment.

Aurora is a K-6 school of approximately 364 students. It was built in 1992. We are located in Drayton Valley, Alberta, 100 km southwest of Edmonton. Our school division is Wild Rose, whose central office is located in Rocky Mountain House. Our special programs include: Aurora Watch, after school P.E., hot lunch program, annual concerts, monthly assemblies, after school care, choirs, cultural performances, daily P.E., D.A.R.E., early literacy, enrichment, house leagues, gr. 5 outdoor education, reading expedition, Safe & Caring Schools, French program, after school science club, annual speech competition, running/walking club, and study skills.



Aurora Elementary

3901 -55 Ave. Drayton Valley, AB T7A 1N9
Phone 780-542-9355 Fax 780-542-7315

Creating Powerful Learning Environments

School Plan

MISSION STATEMENT

To provide the best well-rounded education to the Aurora School community within a caring environment.

VALUES

Our three decision making filters (in order)

SAFE & CARING

- a place where all children feel accepted by everyone
- a family atmosphere promoting enjoyment of learning by everyone
- staff friendliness and high staff morale
- clear, strong, consistent discipline procedures
- safe, clean, facility and grounds

LEARNING

- involved parents and an effective School Council
- a broad program exposing students to a variety of learning opportunities (involving Multiple Intelligences) to promote emotional, academic, social, and physical well-being
- high academic standards revolving around literacy and numeracy
- strong, collaborative school leadership
- effective, focused Professional Learning groups
- enrichment opportunities for students to stretch themselves within Multiple Intelligences

FUN

- regular recreational activities for everyone
- regular opportunities to laugh together

CURRENT SCHOOL GOALS

1. Adopt Revised Math Curriculum
 - professional development
 - professional learning communities: essential outcomes, assessment strategies
 - acquire resources: manipulatives, texts
2. Effective Use of Smartboards and Other Technology
 - a smartboard in every classroom
 - professional development
 - professional learning communities: share plans, websites
3. Continue Development of Assessment Strategies
 - develop outcome based report card
 - identify essential outcomes
 - professional learning communities: develop and implement common assessments
4. Develop and Offer a French Program, Grades 1-6
 - adapt grade 4 French curriculum
 - acquire resources: posters, games, workbooks

AURORA ELEMENTARY SCHOOL
STUDENT, STAFF, AND VOLUNTEER CODE OF CONDUCT



1) I have the **RIGHT** to learn in this school.
It is my **RESPONSIBILITY** to be prepared to learn.

2) I have the **RIGHT** to hear and be heard.
It is my **RESPONSIBILITY** to listen and speak in appropriate and acceptable school language.

3) I have the **RIGHT** to be respected in this school.
It is my **RESPONSIBILITY** not to hurt the feelings of others.

4) I have the **RIGHT** to be safe in this school.
It is my **RESPONSIBILITY** not to threaten or physically harm anyone.

5) I have a **RIGHT** to my own personal space.
It is my **RESPONSIBILITY** to respect the personal property and space of others.

6) I have a **RIGHT** to assistance and support in learning self-control.
It is my **RESPONSIBILITY** to practice self-control and ask for assistance when necessary.



Aurora Elementary

3901 -55 Ave. Drayton Valley, AB T7A 1N9
Phone 780-542-9355 Fax 780-542-7315

Creating Powerful Learning Environments

THE AURORA WAY

A- Always treat others as you would like to be treated

U- Use proper manners and be polite

R- Respect others, the environment and property

O- Openness and honesty

R- Responsible and trustworthy behavior

A- A place where all people feel accepted

W- Work to the best of your ability

A- A safe and caring school

Y- You can make it happen!



Combined 2012 Accountability Pillar Overall Summary

Measure Category	Measure Category Evaluation	Measure	Aurora Elementary School			Alberta			Measure Evaluation		
			Current Result	Prev Year Result	Prev 3 Year Average	Current Result	Prev Year Result	Prev 3 Year Average	Achievement	Improvement	Overall
Safe and Caring Schools	Excellent	Safe and Caring	88.6	90.7	92.7	88.6	88.1	87.5	Very High	Maintained	Excellent
Student Learning Opportunities	n/a	Program of Studies	84.1	86.9	88.2	80.7	80.9	80.6	Very High	Maintained	Excellent
		Education Quality	92.3	92.2	95.0	89.4	89.4	89.3	Very High	Maintained	Excellent
		Drop Out Rate	n/a	n/a	n/a	3.2	4.2	4.4	n/a	n/a	n/a
		High School Completion Rate (3 yr)	n/a	n/a	n/a	74.1	72.6	71.6	n/a	n/a	n/a
Student Learning Achievement (Grades K-9)	Good	PAT: Acceptable	86.5	90.7	92.9	79.1	79.3	78.9	High	Declined	Acceptable
		PAT: Excellence	19.9	14.0	22.4	20.9	19.6	19.1	High	Maintained	Good
Student Learning Achievement (Grades 10-12)	n/a	Diploma: Acceptable	n/a	n/a	n/a	83.5	82.6	83.5	n/a	n/a	n/a
		Diploma: Excellence	n/a	n/a	n/a	18.6	18.7	18.7	n/a	n/a	n/a
		Diploma Exam Participation Rate (4+ Exams)	n/a	n/a	n/a	56.2	54.9	53.9	n/a	n/a	n/a
		Rutherford Scholarship Eligibility Rate (Revised)	n/a	n/a	n/a	61.5	59.6	58.0	n/a	n/a	n/a
Preparation for Lifelong Learning, World of Work, Citizenship	n/a	Transition Rate (6 yr)	n/a	n/a	n/a	58.4	59.3	59.5	n/a	n/a	n/a
		Work Preparation	71.4	70.0	79.2	79.7	80.1	79.9	Low	Maintained	Issue
		Citizenship	87.3	86.3	89.3	82.5	81.9	81.2	Very High	Maintained	Excellent
Parental Involvement	Good	Parental Involvement	79.6	73.7	80.4	79.7	79.9	80.0	High	Maintained	Good
Continuous Improvement	Excellent	School Improvement	86.8	83.4	90.2	80.0	80.1	79.8	Very High	Maintained	Excellent

Notes:

1. PAT results are a weighted average of the percent meeting standards (Acceptable, Excellence) on Provincial Achievement Tests. The weights are the number of students enrolled in each course. Courses included: English Language Arts (Grades 3, 6, 9), Science (Grades 6, 9), French Language Arts (Grades 6, 9), Français (Grades 6, 9).
2. Diploma results are a weighted average of percent meeting standards (Acceptable, Excellence) on Diploma Examinations. The weights are the number of students writing the Diploma Examination for each course. Courses included: English Language Arts 30-1, English Language Arts 30-2, French Language Arts 30-1, Français 30-1, Pure Mathematics 30, Applied Mathematics 30, Biology 30, Science 30.
3. Overall evaluations can only be calculated if both improvement and achievement evaluations are available.
4. The subsequent pages include evaluations for each performance measure. If jurisdictions desire not to present this information for each performance measure in the subsequent pages, please include a reference to this overall summary page for each performance measure.
5. Data values have been suppressed where the number of students is less than 6. Suppression is marked with an asterisk (*).

Goal One: Success for Every Student

Outcome: Students demonstrate proficiency in literacy and numeracy.

Performance Measure	Results (in percentages)					Target ¹	Evaluation			Targets ²		
	2008	2009	2010	2011	2012	2012	Achievement	Improvement	Overall	2013	2014	2015
Overall percentage of students in Grades 3, 6 and 9 who achieved the acceptable standard on Provincial Achievement Tests (overall cohort results).	94.8	93.4	94.6	90.7	86.5	90	High	Declined	Acceptable	91	92	93
Overall percentage of students in Grades 3, 6 and 9 who achieved the standard of excellence on Provincial Achievement Tests (overall cohort results).	24.2	27.6	25.7	14.0	19.9	21	High	Maintained	Good	22	23	25

Comment on Results

(an assessment of progress toward achieving the target)

We are very happy to see an improvement in the area of standard of excellence. This was one of our goals this year. We look to improve this year on the area of achieving acceptable standard. We did have a staff change part way through the year that may have affected these results.

Strategies

Teachers will continue to focus on literacy and numeracy, primarily in the primary grades.

We offer an early literacy pull out program to work with lower level students.

Teachers will conduct an in-depth PAT analysis of the results and identify areas of strength and areas to improve upon in both meeting and exceeding the standard as well as excelling. We will then create a document for all teachers to access and use in their classrooms.

Staff will brainstorm on ideas such as using exemplars to improve achievement results.

Notes:

1. Aggregated PAT results are based upon a weighted average of percent meeting standards (Acceptable, Excellence). The weights are the number of students enrolled in each course. Courses included: English Language Arts (Grades 3, 6, 9), Science (Grades 6, 9), French Language Arts (Grades 6, 9), Français (Grades 6, 9). The percentages achieving the acceptable standard include the percentages achieving the standard of excellence.
2. Data values have been suppressed where the number of students is less than 6. Suppression is marked with an asterisk (*).

Outcome: Students develop competencies for success as engaged thinkers and ethical citizens with an entrepreneurial spirit.

Performance Measure	Results (in percentages)					Target	Evaluation			Targets		
	2008	2009	2010	2011	2012	2012	Achievement	Improvement	Overall	2013	2014	2015
Percentage of teachers, parents and students who are satisfied that students model the characteristics of active citizenship.	88.5	91.5	90.2	86.3	87.3	89	Very High	Maintained	Excellent	90	91	92
Percentage of teachers and parents who agree that students are taught attitudes and behaviours that will make them successful at work when they finish school.	82.9	83.3	84.2	70.0	71.4	72	Low	Maintained	Issue	73	74	75

Comment on Results

(an assessment of progress toward achieving the target)

We are moving up in both areas which is positive. We hope to continue this trend.

Strategies

We are very pleased with our results that schools model the characteristics of active citizenship. We will monitor the measure that students are taught attitudes and behaviors that make them successful at work. This is normally very high. It is our goal to have students leaving Aurora who are well prepared to take on any challenges that they may face. Through our divisional three pillars initiative and AISI research project students will gain 21st century learning skills such as collaboration, problem solving, critical thinking, life-long learning, digital literacy, global citizenship, taking responsibility for their learning.

Note: Data values have been suppressed where the number of respondents is less than 6. Suppression is marked with an asterisk (*).

Goal Two: High Quality Education through Collaboration and Innovation

Outcome: Effective learning and teaching within caring, respectful, safe and healthy environments.

Performance Measure	Results (in percentages)					Target 2012	Evaluation			Targets		
	2008	2009	2010	2011	2012		Achievement	Improvement	Overall	2013	2014	2015
Percentage of teachers, parents and students satisfied with the opportunity for students to receive a broad program of studies including fine arts, career, technology, and health and physical education.	85.6	87.4	90.1	86.9	84.1	87	Very High	Maintained	Excellent	88	89	90
Percentage of teachers, parents and students satisfied with the overall quality of basic education.	95.2	96.1	96.6	92.2	92.3	93	Very High	Maintained	Excellent	94	95	96
Percentage of teacher, parent and student agreement that: students are safe at school, are learning the importance of caring for others, are learning respect for others and are treated fairly in school.	90.7	95.0	92.3	90.7	88.6	90	Very High	Maintained	Excellent	92	94	96

Comment on Results

(an assessment of progress toward achieving the target)

It is positive to see that we continue to do well in these areas. We will continue to monitor and try to improve.

Strategies

We are very pleased that Aurora school is a safe and caring place. We continue to make this our #1 priority in our decision-making filters. There is a great deal of time and energy spent developing a safe and caring culture. We will continue to improve in this area.

We have created a school motto called the "Aurora Way" which promotes a safe and caring school environment through nine guiding principles developed by staff, students and parents. We also have a school song and mascot to support this. Also daily school announcements by the principal help promote this goal.

Note: Data values have been suppressed where the number of respondents is less than 6. Suppression is marked with an asterisk (*).

Outcome: *The education system demonstrates leadership and collaboration.*

Performance Measure	Results (in percentages)					Target	Evaluation			Targets		
	2008	2009	2010	2011	2012	2012	Achievement	Improvement	Overall	2013	2014	2015
Percentage of teachers and parents satisfied with parental involvement in decisions about their child's education.	86.9	83.3	84.1	73.7	79.6	81	High	Maintained	Good	83	85	87
Percentage of teachers, parents and students indicating that their school and schools in their jurisdiction have improved or stayed the same the last three years.	91.4	95.9	91.4	83.4	86.8	88	Very High	Maintained	Excellent	90	92	94

Comment on Results

(an assessment of progress toward achieving the target)

We are happy to see the improvement in parental involvement. We will continue to work hard to see these numbers improve.

Strategies

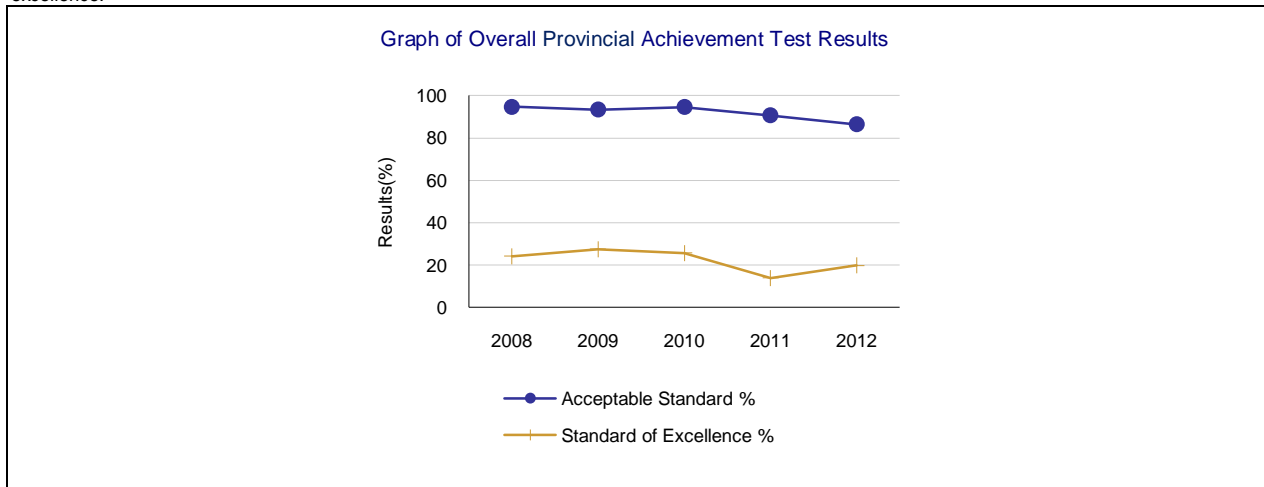
This was a huge concern for the new administration and staff at Aurora and has shown significant improvement. We will continue to look at ways to increase parental involvement, including collaboration with the PAC. We had a successful movie night, a staff member at PAC meetings, and other issues that recognized the importance as parents as advisors to the principal.

Note: Data values have been suppressed where the number of respondents is less than 6. Suppression is marked with an asterisk (*).

Provincial Achievement Test Results – Measure Details

PAT Course by Course Results by Number Enrolled.													
		Results (in percentages)										Target	
		2008		2009		2010		2011		2012		2012	
		A	E	A	E	A	E	A	E	A	E	A	E
English Language Arts 3	School	94.1	9.8	90.7	18.5	88.9	20.4	94.2	7.7	85.0	11.7		
	Authority	86.8	12.2	86.4	11.2	84.2	16.9	86.2	9.8	84.9	12.6		
	Province	80.1	16.1	81.3	18.2	81.6	19.5	81.8	17.5	81.9	20.4		
Mathematics 3	School	n/a	n/a	n/a	n/a	n/a	n/a	94.2	30.8	83.3	26.7		
	Authority	n/a	n/a	n/a	n/a	n/a	n/a	80.3	21.1	80.3	18.6		
	Province	n/a	n/a	n/a	n/a	n/a	n/a	77.4	26.0	76.8	25.5		
English Language Arts 6	School	94.1	31.4	95.9	24.5	97.9	21.3	89.8	8.2	89.6	18.8		
	Authority	84.6	17.7	88.6	17.1	83.0	13.1	83.2	9.2	85.1	9.2		
	Province	81.1	21.0	81.8	18.9	83.3	18.9	83.0	18.5	82.7	17.8		
Mathematics 6	School	n/a	n/a	n/a	n/a	n/a	n/a	83.7	6.1	77.1	18.8		
	Authority	n/a	n/a	n/a	n/a	n/a	n/a	73.3	12.3	70.7	9.2		
	Province	n/a	n/a	n/a	n/a	n/a	n/a	73.7	17.8	74.7	16.6		
Science 6	School	96.1	31.4	93.9	40.8	97.9	36.2	87.8	26.5	85.4	31.3		
	Authority	77.6	22.2	80.4	25.9	79.4	22.5	77.4	23.4	79.9	21.3		
	Province	74.8	24.1	76.5	24.8	76.8	26.4	76.2	25.0	77.8	28.2		
Social Studies 6	School	n/a	n/a	n/a	n/a	85.1	21.3	79.6	10.2	83.3	25.0		
	Authority	n/a	n/a	n/a	n/a	71.3	13.1	71.5	11.0	71.8	11.5		
	Province	n/a	n/a	n/a	n/a	71.0	16.4	71.1	18.5	73.2	19.5		

"A" = Acceptable; "E" = Excellence — the percentages achieving the acceptable standard include the percentages achieving the standard of excellence.

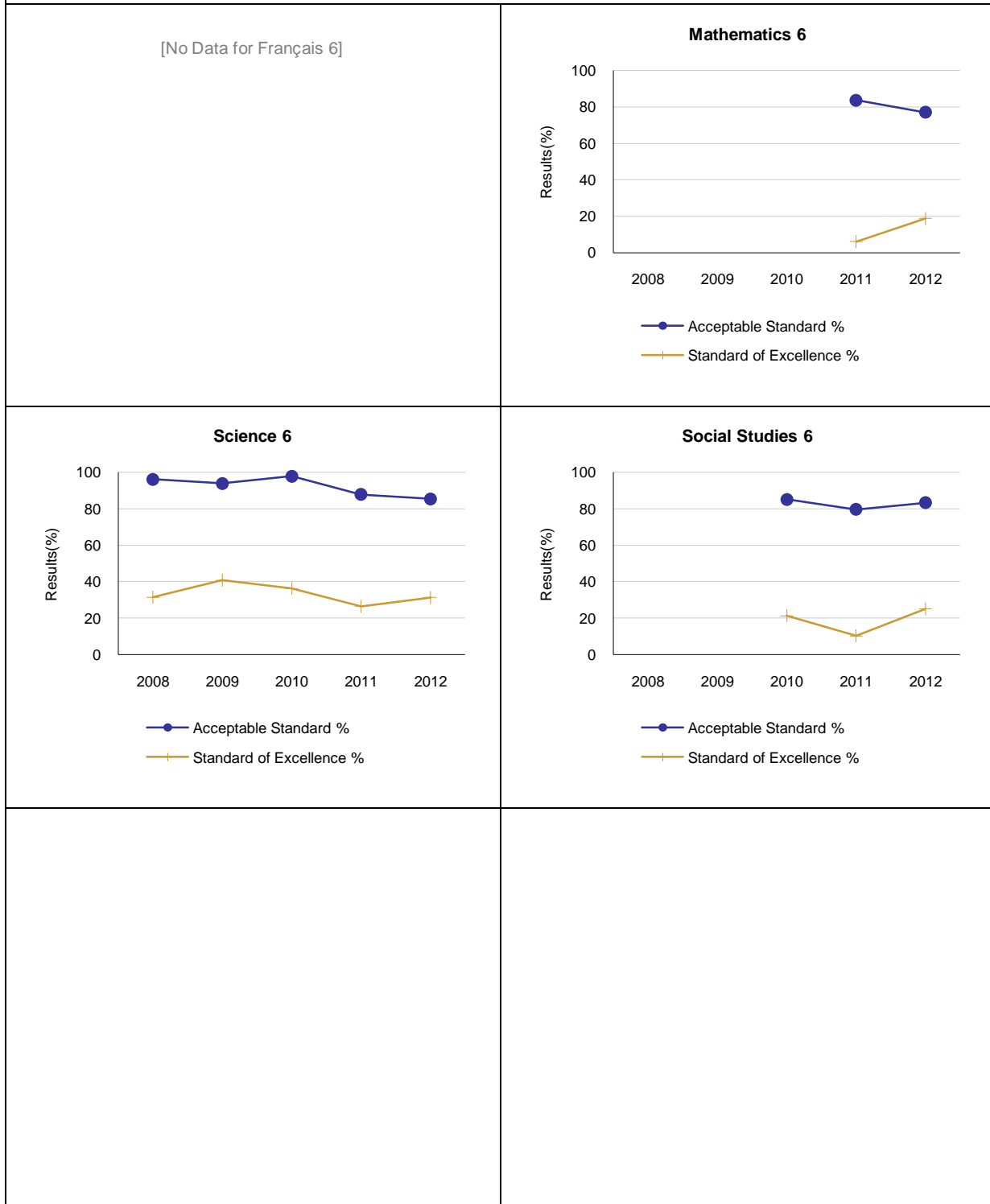


Graph of Provincial Achievement Test Results by Course

<p>English Language Arts 3</p> <table border="1"> <thead> <tr> <th>Year</th> <th>Acceptable Standard %</th> <th>Standard of Excellence %</th> </tr> </thead> <tbody> <tr> <td>2008</td> <td>95</td> <td>10</td> </tr> <tr> <td>2009</td> <td>92</td> <td>20</td> </tr> <tr> <td>2010</td> <td>90</td> <td>22</td> </tr> <tr> <td>2011</td> <td>95</td> <td>8</td> </tr> <tr> <td>2012</td> <td>85</td> <td>12</td> </tr> </tbody> </table>	Year	Acceptable Standard %	Standard of Excellence %	2008	95	10	2009	92	20	2010	90	22	2011	95	8	2012	85	12	<p>[No Data for French Language Arts 3]</p>
Year	Acceptable Standard %	Standard of Excellence %																	
2008	95	10																	
2009	92	20																	
2010	90	22																	
2011	95	8																	
2012	85	12																	
<p>[No Data for Français 3]</p>	<p>Mathematics 3</p> <table border="1"> <thead> <tr> <th>Year</th> <th>Acceptable Standard %</th> <th>Standard of Excellence %</th> </tr> </thead> <tbody> <tr> <td>2011</td> <td>95</td> <td>30</td> </tr> <tr> <td>2012</td> <td>82</td> <td>25</td> </tr> </tbody> </table>	Year	Acceptable Standard %	Standard of Excellence %	2011	95	30	2012	82	25									
Year	Acceptable Standard %	Standard of Excellence %																	
2011	95	30																	
2012	82	25																	
<p>English Language Arts 6</p> <table border="1"> <thead> <tr> <th>Year</th> <th>Acceptable Standard %</th> <th>Standard of Excellence %</th> </tr> </thead> <tbody> <tr> <td>2008</td> <td>95</td> <td>32</td> </tr> <tr> <td>2009</td> <td>96</td> <td>25</td> </tr> <tr> <td>2010</td> <td>98</td> <td>22</td> </tr> <tr> <td>2011</td> <td>90</td> <td>10</td> </tr> <tr> <td>2012</td> <td>90</td> <td>20</td> </tr> </tbody> </table>	Year	Acceptable Standard %	Standard of Excellence %	2008	95	32	2009	96	25	2010	98	22	2011	90	10	2012	90	20	<p>[No Data for French Language Arts 6]</p>
Year	Acceptable Standard %	Standard of Excellence %																	
2008	95	32																	
2009	96	25																	
2010	98	22																	
2011	90	10																	
2012	90	20																	

Note: Data values have been suppressed where the number of students is less than 6. Suppression is marked with an asterisk (*).

Graph of Provincial Achievement Test Results by Course



Note: Data values have been suppressed where the number of students is less than 6. Suppression is marked with an asterisk (*).

PAT Results Course By Course Summary By Enrolled With Measure Evaluation

		Aurora Elementary School							Alberta			
Course	Measure	Achievement	Improvement	Overall	2012		Prev 3 Yr Avg		2012		Prev 3 Yr Avg	
					N	%	N	%	N	%	N	%
English Language Arts 3	Acceptable Standard	Intermediate	Declined	Issue	60	85.0	53	91.3	44,689	81.9	42,242	81.6
	Standard of Excellence	Intermediate	Maintained	Acceptable	60	11.7	53	15.5	44,689	20.4	42,242	18.4
Mathematics 3	Acceptable Standard	n/a	Declined	n/a	60	83.3	52	94.2	44,689	76.8	42,957	77.4
	Standard of Excellence	n/a	Maintained	n/a	60	26.7	52	30.8	44,689	25.5	42,957	26.0
English Language Arts 6	Acceptable Standard	High	Maintained	Good	48	89.6	48	94.5	43,170	82.7	43,453	82.7
	Standard of Excellence	High	Maintained	Good	48	18.8	48	18.0	43,170	17.8	43,453	18.8
Mathematics 6	Acceptable Standard	n/a	Maintained	n/a	48	77.1	49	83.7	43,170	74.7	43,539	73.7
	Standard of Excellence	n/a	Improved	n/a	48	18.8	49	6.1	43,170	16.6	43,539	17.8
Science 6	Acceptable Standard	Intermediate	Declined	Issue	48	85.4	48	93.2	43,073	77.8	43,389	76.5
	Standard of Excellence	High	Maintained	Good	48	31.3	48	34.5	43,073	28.2	43,389	25.4
Social Studies 6	Acceptable Standard	n/a	Maintained	n/a	48	83.3	48	82.3	43,170	73.2	43,569	71.1
	Standard of Excellence	n/a	Improved	n/a	48	25.0	48	15.7	43,170	19.5	43,569	17.5

Note: Data values have been suppressed where the number of students is less than 6. Suppression is marked with an asterisk (*).

Achievement Evaluation is not calculated for courses that do not have sufficient data available, either due to too few jurisdictions offering the course or because of changes in tests.

Measure Evaluation Reference - Achievement Evaluation

Achievement evaluation is based upon a comparison of Current Year data to a set of standards which remain consistent over time. The Standards are calculated by taking the 3 year average of baseline data for each measure across all school jurisdictions and calculating the 5th, 25th, 75th, and 95th percentiles. Once calculated, these standards remain in place from year to year to allow for consistent planning and evaluation.

The table below shows the range of values defining the 5 achievement evaluation levels for each measure.

Course	Measure	Very Low	Low	Intermediate	High	Very High
English Language Arts 3	Acceptable Standard	0.00 - 72.53	72.53 - 80.49	80.49 - 89.12	89.12 - 93.04	93.04 - 100.00
	Standard of Excellence	0.00 - 6.06	6.06 - 11.35	11.35 - 16.93	16.93 - 20.27	20.27 - 100.00
French Language Arts 3	Acceptable Standard	0.00 - 60.68	60.68 - 77.74	77.74 - 88.22	88.22 - 94.88	94.88 - 100.00
	Standard of Excellence	0.00 - 3.31	3.31 - 8.38	8.38 - 17.31	17.31 - 25.31	25.31 - 100.00
English Language Arts 6	Acceptable Standard	0.00 - 67.95	67.95 - 78.40	78.40 - 86.09	86.09 - 91.37	91.37 - 100.00
	Standard of Excellence	0.00 - 6.83	6.83 - 11.65	11.65 - 17.36	17.36 - 22.46	22.46 - 100.00
French Language Arts 6	Acceptable Standard	0.00 - 41.69	41.69 - 73.54	73.54 - 92.32	92.32 - 97.93	97.93 - 100.00
	Standard of Excellence	0.00 - 2.72	2.72 - 8.13	8.13 - 15.29	15.29 - 23.86	23.86 - 100.00
Science 6	Acceptable Standard	0.00 - 60.36	60.36 - 78.51	78.51 - 86.46	86.46 - 90.64	90.64 - 100.00
	Standard of Excellence	0.00 - 11.74	11.74 - 17.42	17.42 - 25.34	25.34 - 34.31	34.31 - 100.00
English Language Arts 9	Acceptable Standard	0.00 - 63.55	63.55 - 75.66	75.66 - 83.70	83.70 - 90.27	90.27 - 100.00
	Standard of Excellence	0.00 - 5.96	5.96 - 9.43	9.43 - 14.72	14.72 - 20.46	20.46 - 100.00
French Language Arts 9	Acceptable Standard	0.00 - 67.59	67.59 - 81.33	81.33 - 92.06	92.06 - 97.26	97.26 - 100.00
	Standard of Excellence	0.00 - 1.67	1.67 - 6.81	6.81 - 17.11	17.11 - 28.68	28.68 - 100.00
Science 9	Acceptable Standard	0.00 - 50.57	50.57 - 60.14	60.14 - 72.50	72.50 - 76.89	76.89 - 100.00
	Standard of Excellence	0.00 - 3.39	3.39 - 6.71	6.71 - 11.81	11.81 - 15.85	15.85 - 100.00

Notes:

The range of values at each evaluation level is interpreted as greater than or equal to the lower value, and less than the higher value. For the Very High evaluation level, values range from greater than or equal to the lower value to 100%.

Achievement Evaluation is not calculated for courses that do not have sufficient data available, either due to too few jurisdictions offering the course or because of changes in tests.

Improvement Table

For each jurisdiction, improvement evaluation consists of comparing the Current Year result for each measure with the previous three-year average. A chi-square statistical test is used to determine the significance of the improvement. This test takes into account the size of the jurisdiction in the calculation to make improvement evaluation fair across jurisdictions of different sizes.

The table below shows the definition of the 5 improvement evaluation levels based upon the chi-square result.

Evaluation Category	Chi-Square Range
Declined Significantly	3.84 + (current < previous 3-year average)
Declined	1.00 - 3.83 (current < previous 3-year average)
Maintained	less than 1.00
Improved	1.00 - 3.83 (current > previous 3-year average)
Improved Significantly	3.84 + (current > previous 3-year average)

Overall Evaluation Table

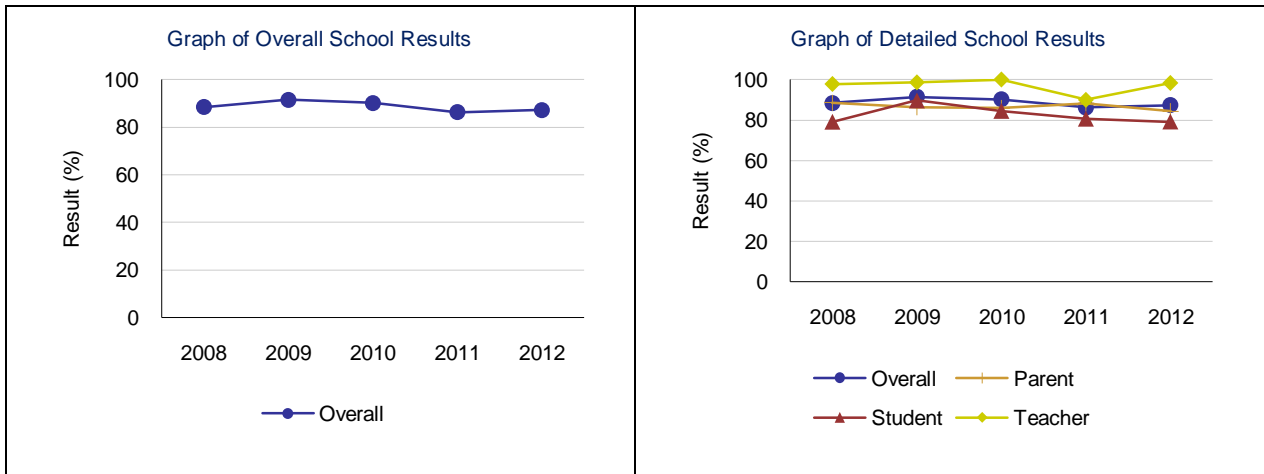
The overall evaluation combines the Achievement Evaluation and the Improvement Evaluation. The table below illustrates how the Achievement and Improvement evaluations are combined to get the overall evaluation.

	Achievement				
	Very High	High	Intermediate	Low	Very Low
Improved Significantly	Excellent	Good	Good	Good	Acceptable
Improved	Excellent	Good	Good	Acceptable	Issue
Maintained	Excellent	Good	Acceptable	Issue	Concern
Declined	Good	Acceptable	Issue	Issue	Concern
Declined Significantly	Acceptable	Issue	Issue	Concern	Concern

Citizenship – Measure Details

Percentage of teachers, parents and students who are satisfied that students model the characteristics of active citizenship.

	School					Authority					Province				
	2008	2009	2010	2011	2012	2008	2009	2010	2011	2012	2008	2009	2010	2011	2012
Overall	88.5	91.5	90.2	86.3	87.3	72.0	75.1	75.1	73.8	73.8	77.9	80.3	81.4	81.9	82.5
Teacher	97.8	98.6	100.0	90.0	98.3	84.0	88.6	91.4	87.2	86.6	90.6	91.8	93.0	92.7	93.1
Parent	88.6	86.2	86.0	88.3	84.3	65.6	66.6	68.4	69.0	69.2	74.7	77.4	78.5	78.6	79.4
Student	79.1	89.7	84.5	80.6	79.2	66.3	70.0	65.4	65.4	65.7	68.5	71.8	72.7	74.5	75.0

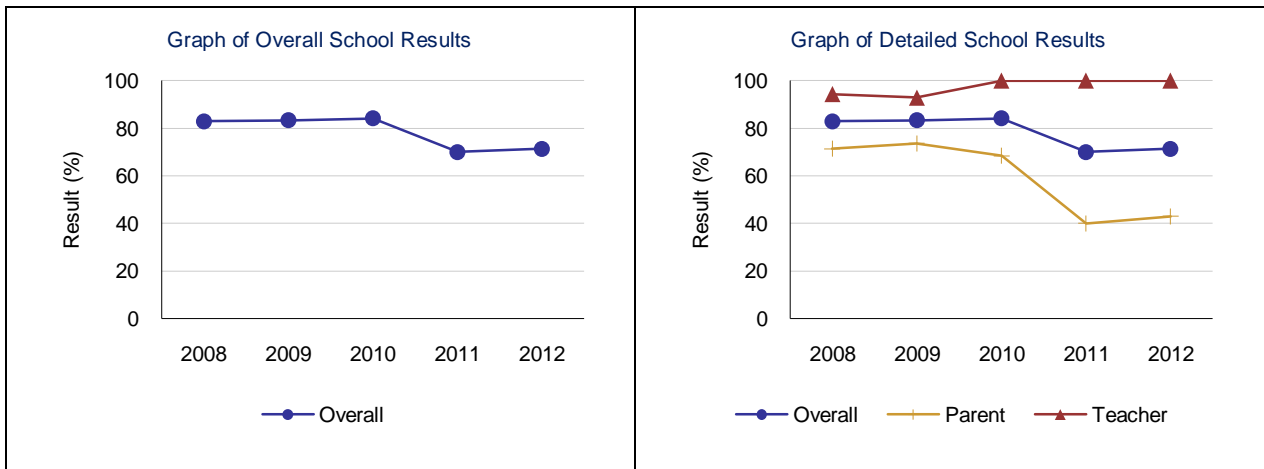


Note: Data values have been suppressed where the number of respondents is less than 6. Suppression is marked with an asterisk (*).

Work Preparation – Measure Details

Percentage of teachers and parents who agree that students are taught attitudes and behaviours that will make them successful at work when they finish school.

	School					Authority					Province				
	2008	2009	2010	2011	2012	2008	2009	2010	2011	2012	2008	2009	2010	2011	2012
Overall	82.9	83.3	84.2	70.0	71.4	76.8	76.2	72.9	73.8	69.3	80.1	79.6	79.9	80.1	79.7
Teacher	94.4	92.9	100.0	100.0	100.0	89.2	91.0	90.0	82.2	84.0	89.3	88.9	90.0	89.6	89.5
Parent	71.4	73.7	68.4	40.0	42.9	64.3	61.5	55.9	65.5	54.6	70.9	70.2	69.8	70.6	69.9

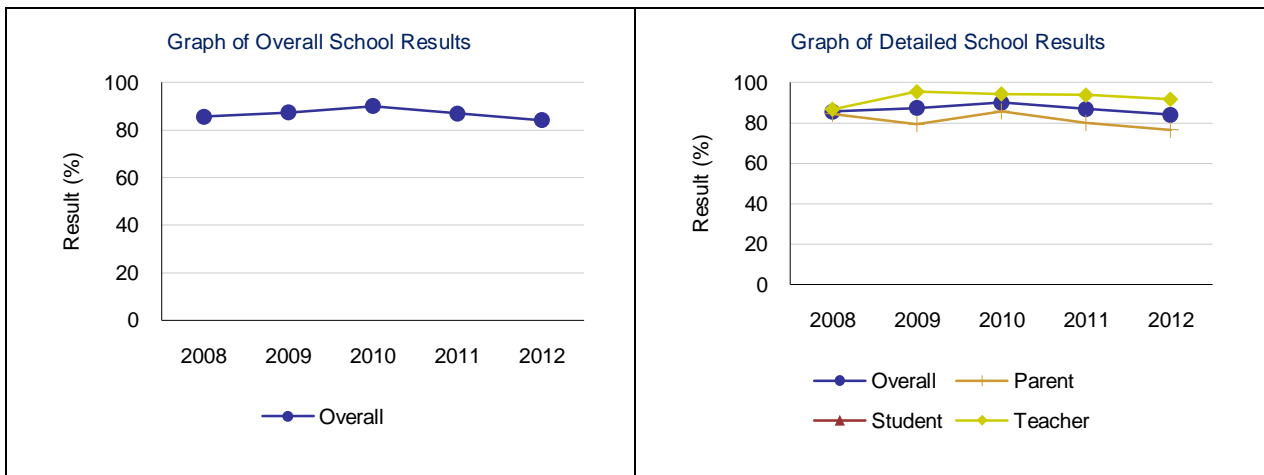


Note: Data values have been suppressed where the number of respondents is less than 6. Suppression is marked with an asterisk (*).

Program of Studies – Measure Details

Percentage of teachers, parents and students satisfied with the opportunity for students to receive a broad program of studies including fine arts, career, technology, and health and physical education.

	School					Authority					Province				
	2008	2009	2010	2011	2012	2008	2009	2010	2011	2012	2008	2009	2010	2011	2012
Overall	85.6	87.4	90.1	86.9	84.1	73.4	74.5	71.9	75.2	71.9	79.4	80.3	80.5	80.9	80.7
Teacher	86.7	95.5	94.4	93.8	91.7	82.0	80.9	79.0	82.0	79.9	86.4	86.8	87.7	87.6	87.3
Parent	84.5	79.3	85.8	80.1	76.6	70.3	69.9	69.6	72.8	69.5	77.6	78.7	78.0	78.3	78.1
Student	n/a	n/a	n/a	n/a	n/a	67.9	72.8	67.1	70.8	66.1	74.1	75.3	75.9	76.9	76.9

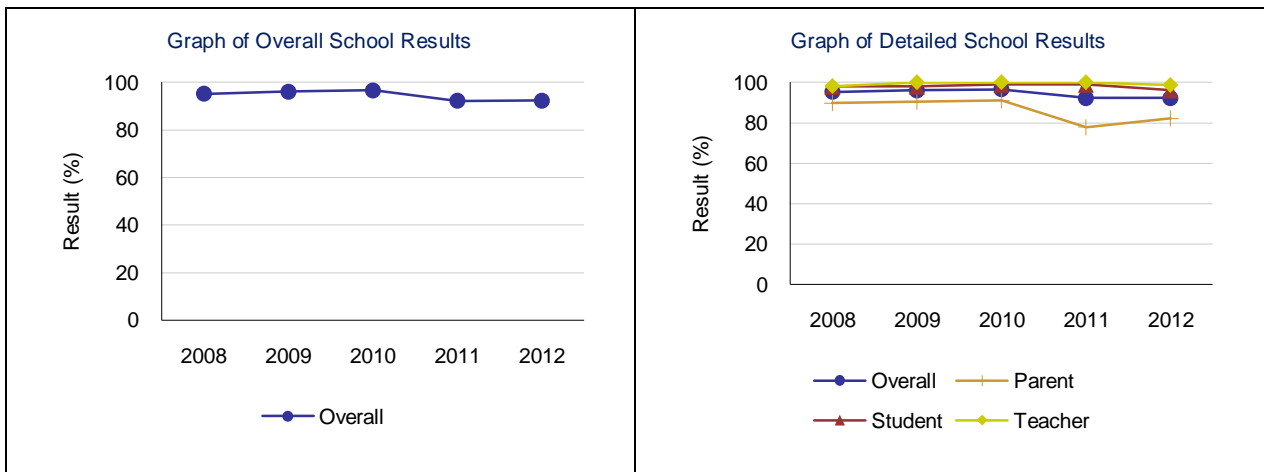


Note: Data values have been suppressed where the number of respondents is less than 6. Suppression is marked with an asterisk (*).

Education Quality – Measure Details

Percentage of teachers, parents and students satisfied with the overall quality of basic education.

	School					Authority					Province				
	2008	2009	2010	2011	2012	2008	2009	2010	2011	2012	2008	2009	2010	2011	2012
Overall	95.2	96.1	96.6	92.2	92.3	87.1	87.4	86.2	85.1	84.9	88.2	89.3	89.2	89.4	89.4
Teacher	98.1	100.0	100.0	100.0	98.6	95.9	94.8	95.1	93.7	93.2	94.9	95.3	95.6	95.5	95.4
Parent	89.7	90.4	91.0	77.8	82.1	79.9	78.7	78.9	78.5	77.7	83.0	84.4	83.9	84.2	84.2
Student	97.9	98.0	98.9	98.9	96.1	85.4	88.9	84.5	83.0	83.8	86.6	88.3	88.2	88.5	88.6

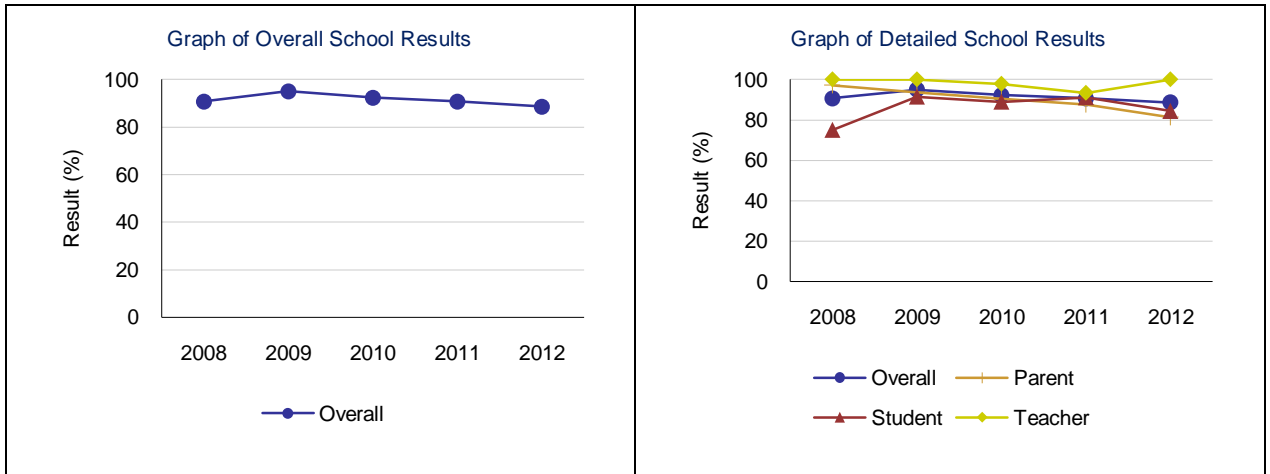


Note: Data values have been suppressed where the number of respondents is less than 6. Suppression is marked with an asterisk (*).

Safe and Caring – Measure Details

Percentage of teacher, parent and student agreement that: students are safe at school, are learning the importance of caring for others, are learning respect for others and are treated fairly in school.

	School					Authority					Province				
	2008	2009	2010	2011	2012	2008	2009	2010	2011	2012	2008	2009	2010	2011	2012
Overall	90.7	95.0	92.3	90.7	88.6	82.8	83.8	83.2	83.1	82.6	85.1	86.9	87.6	88.1	88.6
Teacher	100.0	100.0	97.8	93.3	100.0	90.7	92.9	92.1	91.5	90.4	93.1	93.8	94.4	94.5	94.8
Parent	97.1	93.7	90.3	87.6	81.4	80.2	78.2	80.6	80.2	80.4	83.2	85.3	86.1	86.6	87.4
Student	75.0	91.4	88.9	91.1	84.3	77.5	80.4	76.8	77.7	77.0	79.1	81.7	82.2	83.3	83.7

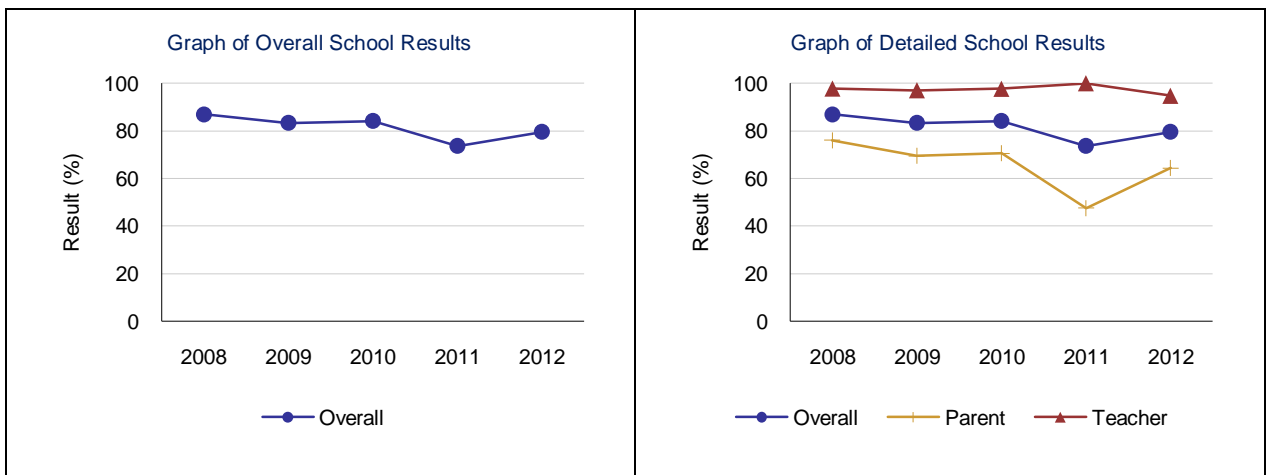


Note: Data values have been suppressed where the number of respondents is less than 6. Suppression is marked with an asterisk (*).

Parental Involvement – Measure Details

Percentage of teachers and parents satisfied with parental involvement in decisions about their child's education.

	School					Authority					Province				
	2008	2009	2010	2011	2012	2008	2009	2010	2011	2012	2008	2009	2010	2011	2012
Overall	86.9	83.3	84.1	73.7	79.6	80.0	79.4	76.8	74.8	73.9	78.2	80.1	80.0	79.9	79.7
Teacher	97.8	97.1	97.7	100.0	94.8	90.1	90.0	88.6	86.3	85.5	87.5	88.0	88.6	88.1	88.0
Parent	76.0	69.5	70.5	47.5	64.3	69.9	68.8	65.0	63.2	62.3	69.0	72.2	71.3	71.7	71.4

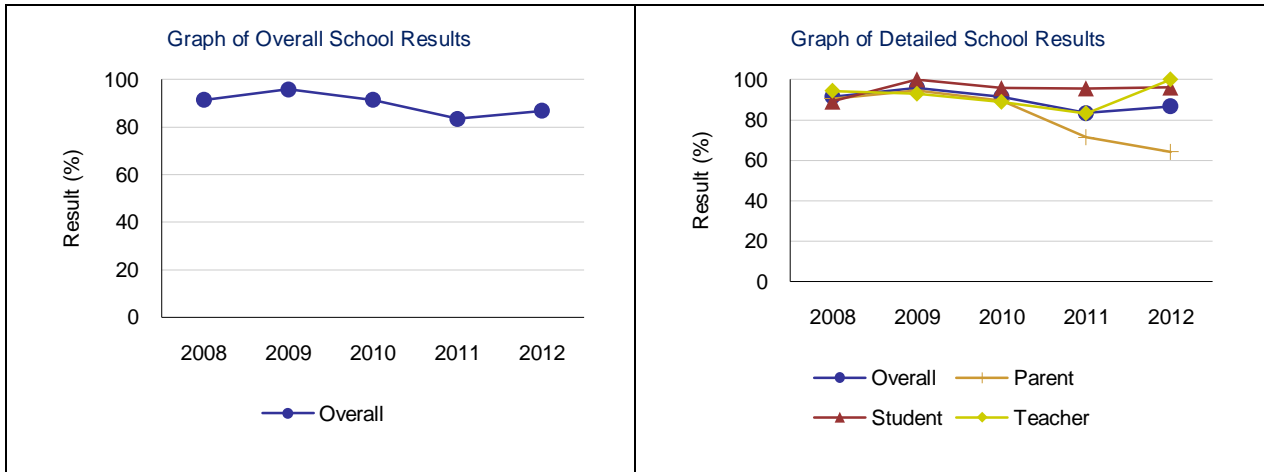


Note: Data values have been suppressed where the number of respondents is less than 6. Suppression is marked with an asterisk (*).

School Improvement – Measure Details

Percentage of teachers, parents and students indicating that their school and schools in their jurisdiction have improved or stayed the same the last three years.

	School					Authority					Province				
	2008	2009	2010	2011	2012	2008	2009	2010	2011	2012	2008	2009	2010	2011	2012
Overall	91.4	95.9	91.4	83.4	86.8	75.2	79.0	76.5	75.9	73.1	77.0	79.4	79.9	80.1	80.0
Teacher	94.4	92.9	88.9	83.3	100.0	73.6	83.2	77.2	76.4	77.1	75.6	78.2	80.8	80.1	81.1
Parent	90.5	94.7	89.5	71.4	64.3	74.4	71.9	74.7	73.6	68.5	75.9	78.1	77.0	77.3	76.2
Student	89.1	100.0	95.7	95.6	96.0	77.7	81.7	77.6	77.5	73.8	79.5	81.8	81.8	82.9	82.7



Note: Data values have been suppressed where the number of respondents is less than 6. Suppression is marked with an asterisk (*).