
Leslieville School - Combined 3 -Year Education Plan and Annual Education Results Report (AERR)

Each school authority establishes requirements for the content and process for school education plans and annual reports as part of its accountability system. Schools should prepare their education plans and annual reports based on specifications provided by their school authority. For details please refer to the *Policy and Requirements for Planning and Results Reporting*: <http://www.education.alberta.ca/admin/resources/planning/reporting2013.aspx>.

This template is provided to assist in the preparation of their plans and reports. Schools may use, modify or extract elements from this template as required.

Please note that this template is not designed to address the requirements for Charter Schools and Accredited Private Schools. These schools should refer to the Sample Format for Combined 3-Year Education Plan and Annual Education Results Report (AERR) for Charter School and Accredited Private School Authorities.

Combined 2013 Accountability Pillar Overall Summary

| Measure Category | Measure Category Evaluation | Measure | Leslieville Elementary School | | | Alberta | | | Measure Evaluation | | |
|---|-----------------------------|---|-------------------------------|------------------|---------------------|----------------|------------------|---------------------|--------------------|-------------|-----------|
| | | | Current Result | Prev Year Result | Prev 3 Year Average | Current Result | Prev Year Result | Prev 3 Year Average | Achievement | Improvement | Overall |
| Safe and Caring Schools | Excellent | Safe and Caring | 89.8 | 89.5 | 87.8 | 89.0 | 88.6 | 88.1 | Very High | Maintained | Excellent |
| Student Learning Opportunities | n/a | Program of Studies | 78.7 | 73.3 | 74.7 | 81.5 | 80.7 | 80.7 | High | Maintained | Good |
| | | Education Quality | 94.7 | 93.7 | 92.9 | 89.8 | 89.4 | 89.3 | Very High | Maintained | Excellent |
| | | Drop Out Rate | n/a | n/a | n/a | 3.5 | 3.2 | 3.9 | n/a | n/a | n/a |
| | | High School Completion Rate (3 yr) | n/a | n/a | n/a | 74.8 | 74.1 | 72.7 | n/a | n/a | n/a |
| Student Learning Achievement (Grades K-9) | Good | PAT: Acceptable | 87.9 | 87.0 | 92.6 | 79.0 | 79.1 | 79.2 | High | Maintained | Good |
| | | PAT: Excellence | 24.1 | 18.5 | 25.1 | 18.9 | 20.8 | 19.9 | High | Maintained | Good |
| Student Learning Achievement (Grades 10-12) | n/a | Diploma: Acceptable | n/a | n/a | n/a | 84.6 | 83.1 | 82.5 | n/a | n/a | n/a |
| | | Diploma: Excellence | n/a | n/a | n/a | 21.7 | 20.7 | 20.1 | n/a | n/a | n/a |
| | | Diploma Exam Participation Rate (4+ Exams) | n/a | n/a | n/a | 56.6 | 56.2 | 54.9 | n/a | n/a | n/a |
| | | Rutherford Scholarship Eligibility Rate (Revised) | n/a | n/a | n/a | 61.3 | 61.5 | 59.4 | n/a | n/a | n/a |
| Preparation for Lifelong Learning, World of Work, Citizenship | n/a | Transition Rate (6 yr) | n/a | n/a | n/a | 59.5 | 58.4 | 59.2 | n/a | n/a | n/a |
| | | Work Preparation | 77.8 | 69.4 | 74.5 | 80.3 | 79.7 | 79.9 | High | Maintained | Good |
| | | Citizenship | 86.6 | 84.6 | 84.2 | 83.4 | 82.5 | 82.0 | Very High | Maintained | Excellent |
| Parental Involvement | Excellent | Parental Involvement | 87.6 | 82.7 | 79.7 | 80.3 | 79.7 | 79.8 | Very High | Maintained | Excellent |
| Continuous Improvement | Excellent | School Improvement | 83.5 | 88.0 | 82.7 | 80.6 | 80.0 | 80.0 | Very High | Maintained | Excellent |

Notes:

1. PAT results are a weighted average of the percent meeting standards (Acceptable, Excellence) on Provincial Achievement Tests. The weights are the number of students enrolled in each course. Courses included: English Language Arts (Grades 3, 6, 9), Science (Grades 6, 9), French Language Arts (Grades 3, 6, 9), Français (Grades 3, 6, 9).
2. Diploma results are a weighted average of percent meeting standards (Acceptable, Excellence) on Diploma Examinations. The weights are the number of students writing the Diploma Examination for each course. Courses included: English Language Arts 30-1, English Language Arts 30-2, French Language Arts 30-1, Français 30-1, Chemistry 30, Physics 30, Biology 30, Science 30.
3. Overall evaluations can only be calculated if both improvement and achievement evaluations are available.
4. The subsequent pages include evaluations for each performance measure. If jurisdictions desire not to present this information for each performance measure in the subsequent pages, please include a reference to this overall summary page for each performance measure.
5. Data values have been suppressed where the number of students or respondents is less than 6. Suppression is marked with an asterisk (*).
6. Please note that participation in Diploma Examinations and Grade 9 Provincial Achievement Tests was impacted by the flooding in June 2013. Caution should be used when interpreting trends over time for the province and those school authorities affected by the floods.

Measure Evaluation Reference

Achievement Evaluation

Achievement evaluation is based upon a comparison of Current Year data to a set of standards which remain consistent over time. The Standards are calculated by taking the 3 year average of baseline data for each measure across all school jurisdictions and calculating the 5th, 25th, 75th and 95th percentiles. Once calculated, these standards remain in place from year to year to allow for consistent planning and evaluation.

The table below shows the range of values defining the 5 achievement evaluation levels for each measure.

| Measure | Very Low | Low | Intermediate | High | Very High |
|---|---------------|---------------|---------------|---------------|----------------|
| Safe and Caring | 0.00 - 77.62 | 77.62 - 81.05 | 81.05 - 84.50 | 84.50 - 88.03 | 88.03 - 100.00 |
| Program of Studies | 0.00 - 66.31 | 66.31 - 72.65 | 72.65 - 78.43 | 78.43 - 81.59 | 81.59 - 100.00 |
| Education Quality | 0.00 - 80.94 | 80.94 - 84.23 | 84.23 - 87.23 | 87.23 - 89.60 | 89.60 - 100.00 |
| Drop Out Rate | 100.00 - 9.40 | 9.40 - 6.90 | 6.90 - 4.27 | 4.27 - 2.79 | 2.79 - 0.00 |
| High School Completion Rate (3 yr) | 0.00 - 57.03 | 57.03 - 62.36 | 62.36 - 73.88 | 73.88 - 81.79 | 81.79 - 100.00 |
| PAT: Acceptable | 0.00 - 71.50 | 71.50 - 77.76 | 77.76 - 84.91 | 84.91 - 88.69 | 88.69 - 100.00 |
| PAT: Excellence | 0.00 - 11.54 | 11.54 - 14.60 | 14.60 - 20.83 | 20.83 - 26.46 | 26.46 - 100.00 |
| Diploma: Acceptable | 0.00 - 71.28 | 71.28 - 77.34 | 77.34 - 84.16 | 84.16 - 88.87 | 88.87 - 100.00 |
| Diploma: Excellence | 0.00 - 8.77 | 8.77 - 12.71 | 12.71 - 19.16 | 19.16 - 23.03 | 23.03 - 100.00 |
| Diploma Exam Participation Rate (4+ Exams) | 0.00 - 31.10 | 31.10 - 44.11 | 44.11 - 55.78 | 55.78 - 65.99 | 65.99 - 100.00 |
| Rutherford Scholarship Eligibility Rate (Revised) | 0.00 - 43.18 | 43.18 - 49.83 | 49.83 - 59.41 | 59.41 - 70.55 | 70.55 - 100.00 |
| Transition Rate (6 yr) | 0.00 - 39.80 | 39.80 - 46.94 | 46.94 - 56.15 | 56.15 - 68.34 | 68.34 - 100.00 |
| Work Preparation | 0.00 - 66.92 | 66.92 - 72.78 | 72.78 - 77.78 | 77.78 - 86.13 | 86.13 - 100.00 |
| Citizenship | 0.00 - 66.30 | 66.30 - 71.63 | 71.63 - 77.50 | 77.50 - 81.08 | 81.08 - 100.00 |
| Parental Involvement | 0.00 - 70.76 | 70.76 - 74.58 | 74.58 - 78.50 | 78.50 - 82.30 | 82.30 - 100.00 |
| School Improvement | 0.00 - 65.25 | 65.25 - 70.85 | 70.85 - 76.28 | 76.28 - 80.41 | 80.41 - 100.00 |

Notes:

- 1) For all measures except Drop Out Rate: The range of values at each evaluation level is interpreted as greater than or equal to the lower value, and less than the higher value. For the Very High evaluation level, values range from greater than or equal to the lower value to 100%.
- 2) Drop Out Rate measure: As "Drop Out Rate" is inverse to most measures (i.e. lower values are "better"), the range of values at each evaluation level is interpreted as greater than the lower value and less than or equal to the higher value. For the Very High evaluation level, values range from 0% to less than or equal to the higher value.

Improvement Table

For each jurisdiction, improvement evaluation consists of comparing the Current Year result for each measure with the previous three-year average. A chi-square statistical test is used to determine the significance of the improvement. This test takes into account the size of the jurisdiction in the calculation to make improvement evaluation fair across jurisdictions of different sizes.

The table below shows the definition of the 5 improvement evaluation levels based upon the chi-square result.

| Evaluation Category | Chi-Square Range |
|------------------------|---|
| Declined Significantly | 3.84 + (current < previous 3-year average) |
| Declined | 1.00 - 3.83 (current < previous 3-year average) |
| Maintained | less than 1.00 |
| Improved | 1.00 - 3.83 (current > previous 3-year average) |
| Improved Significantly | 3.84 + (current > previous 3-year average) |

Overall Evaluation Table

The overall evaluation combines the Achievement Evaluation and the Improvement Evaluation. The table below illustrates how the Achievement and Improvement evaluations are combined to get the overall evaluation.

| Improvement | Achievement | | | | |
|------------------------|-------------|------------|--------------|------------|------------|
| | Very High | High | Intermediate | Low | Very Low |
| Improved Significantly | Excellent | Good | Good | Good | Acceptable |
| Improved | Excellent | Good | Good | Acceptable | Issue |
| Maintained | Excellent | Good | Acceptable | Issue | Concern |
| Declined | Good | Acceptable | Issue | Issue | Concern |
| Declined Significantly | Acceptable | Issue | Issue | Concern | Concern |

Category Evaluation

The category evaluation is an average of the Overall Evaluation of the measures that make up the category. For the purpose of the calculation, consider an Overall Evaluation of Excellent to be 2, Good to be 1, Acceptable to be 0, Issue to be -1, and Concern to be -2. The simple average (mean) of these values rounded to the nearest integer produces the Category Evaluation value. This is converted back to a colour using the same scale above (e.g. 2=Excellent, 1=Good, 0=Intermediate, -1=Issue, -2=Concern)

Goal One: An excellent start to learning

Outcome: *Children are reaching emotional, social, intellectual and physical development milestones and are ready for school.*

- There are no required performance measures for this goal. Schools are encouraged to incorporate early development data available at the local level.

| |
|---|
| <p>Comment on Results (an assessment of progress toward achieving the target) The Brigance Readiness screen is used each fall with all ECS students. This year's class had 65% of the students ready for Kindergarten.</p> |
| <p>Strategies <i>The ECS teacher will meet with the local play school teachers/parents and any other play groups. There will be a sharing of the previous results and ideas on how the teachers/parents can prepare the students for Kindergarten.</i> <i>Open house early in the school year could also be an opportunity to bring the new parents into the conversation.</i></p> |

Goal Two: Success for Every Student

Outcome: *Students demonstrate proficiency in literacy and numeracy.*

| Performance Measure | Results (in percentages) | | | | | Target | Evaluation | | | Targets | | |
|---|--------------------------|------|------|------|------|--------|-------------|-------------|---------|---------|------|------|
| | 2009 | 2010 | 2011 | 2012 | 2013 | 2013 | Achievement | Improvement | Overall | 2014 | 2015 | 2016 |
| Overall percentage of students in Grades 3, 6 and 9 who achieved the acceptable standard on Provincial Achievement Tests (overall cohort results). | 89.1 | 93.3 | 97.6 | 87.0 | 87.9 | 90 | High | Maintained | Good | 90 | 90 | 90 |
| Overall percentage of students in Grades 3, 6 and 9 who achieved the standard of excellence on Provincial Achievement Tests (overall cohort results). | 28.1 | 25.0 | 31.7 | 18.5 | 24.1 | 20 | High | Maintained | Good | 20 | 25 | 25 |

| |
|--|
| <p>Comment on Results <i>Results are at or just above the Provincial average and the long term goal is to maintain this level of Achievement. Standard of excellence is still an area that we are continuing to work on.</i></p> |
| <p>Strategies <i>All staff are engaged in SmartLearning or Inquiry based learning to enhance the instruction in their classrooms. All teachers are working at incorporating additional inquiry based learning into their plans. There is a classroom teacher that is following the Daily 5 strategies that is leading to improved writing and reading. These strategies will be expanded to other classrooms. Technology is readily available in the form of Chrome books and ipads which helps with student engagement. See the PD Plan for further details.</i></p> |

Notes:

1. Aggregated PAT results are based upon a weighted average of percent meeting standards (Acceptable, Excellence). The weights are the number of students enrolled in each course. Courses included: English Language Arts (Grades 3, 6, 9), Science (Grades 6, 9), French Language Arts (Grades 3, 6, 9), Français (Grades 3, 6, 9). The percentages achieving the acceptable standard include the percentages achieving the standard of excellence.
2. Data values have been suppressed where the number of students or respondents is less than 6. Suppression is marked with an asterisk (*).
3. Please note that participation in Grade 9 Provincial Achievement Tests was substantially impacted by the flooding in June 2013. Caution should be used when interpreting trends over time for the province and those school authorities affected by the floods.

Outcome: *Students demonstrate citizenship and entrepreneurship.*

| Performance Measure | Results (in percentages) | | | | | Target | Evaluation | | | Targets | | |
|--|--------------------------|------|------|------|------|--------|-------------|-------------|-----------|---------|------|------|
| | 2009 | 2010 | 2011 | 2012 | 2013 | 2013 | Achievement | Improvement | Overall | 2014 | 2015 | 2016 |
| Percentage of teachers, parents and students who are satisfied that students model the characteristics of active citizenship. | 84.7 | 84.4 | 83.5 | 84.6 | 86.6 | 85 | Very High | Maintained | Excellent | 85 | 85 | 85 |
| Percentage of teachers and parents who agree that students are taught attitudes and behaviours that will make them successful at work when they finish school. | 84.6 | 73.1 | 81.0 | 69.4 | 77.8 | 80 | High | Maintained | Good | 80 | 80 | 80 |

Outcome: *The achievement gap between First Nations, Métis and Inuit (FNMI) students and all other students is eliminated.*

(Results and evaluations for FNMI measures are required for Public/Separate/Francophone School Authorities only)

| Performance Measure | Results (in percentages) | | | | | Target | Evaluation | | | Targets | | |
|--|--------------------------|------|------|------|------|--------|-------------|-------------|---------|---------|------|------|
| | 2009 | 2010 | 2011 | 2012 | 2013 | 2013 | Achievement | Improvement | Overall | 2014 | 2015 | 2016 |
| Overall percentage of self-identified FNMI students in Grades 3, 6 and 9 who achieved the acceptable standard on Provincial Achievement Tests (overall cohort results). | * | * | * | 72.7 | 100 | 80 | * | * | * | 85 | 85 | 85 |
| Overall percentage of self-identified FNMI students in Grades 3, 6 and 9 who achieved the standard of excellence on Provincial Achievement Tests (overall cohort results). | * | * | * | 0.0 | 17 | 15 | * | * | * | 20 | 20 | 20 |

Goal Three: Quality teaching and school leadership

Outcome: *Teacher preparation and professional growth focus on the competencies needed to help students learn. Effective learning and teaching is achieved through collaborative leadership.*

| Performance Measure | Results (in percentages) | | | | | Target | Evaluation | | | Targets | | |
|--|--------------------------|------|------|------|------|--------|-------------|-------------|---------|---------|------|------|
| | 2009 | 2010 | 2011 | 2012 | 2013 | 2013 | Achievement | Improvement | Overall | 2014 | 2015 | 2016 |
| Percentage of teachers, parents and students satisfied with the opportunity for students to receive a broad program of studies including fine arts, career, technology, and health and physical education. | 78.3 | 73.7 | 77.3 | 73.3 | 78.7 | 80 | High | Maintained | Good | 80 | 80 | 80 |

Goal Four: Engaged and effective governance

Outcome: The education system demonstrates collaboration and engagement.

| Performance Measure | Results (in percentages) | | | | | Target 2013 | Evaluation | | | Targets | | |
|--|--------------------------|------|------|------|------|----------------|-------------|-------------|-----------|---------|------|------|
| | 2009 | 2010 | 2011 | 2012 | 2013 | | Achievement | Improvement | Overall | 2014 | 2015 | 2016 |
| Percentage of teachers and parents satisfied with parental involvement in decisions about their child's education. | 91.9 | 81.1 | 75.4 | 82.7 | 87.6 | 80 | Very High | Maintained | Excellent | 85 | 85 | 85 |
| Percentage of teachers, parents and students satisfied with the overall quality of basic education. | 96.1 | 93.7 | 91.2 | 93.7 | 94.7 | 90 | Very High | Maintained | Excellent | 92 | 92 | 92 |

Comment on Results

(an assessment of progress toward achieving the target)

These great results can still be improved to some degree.

Strategies

Improved communication on the many great things that are happening in the school. Increased used of Remind 101, website and Facebook page.

Create more opportunities for parents to be at the parent council meetings.

Note: Data values have been suppressed where the number of students or respondents is less than 6. Suppression is marked with an asterisk (*).

Outcome: Students and communities have access to safe and healthy learning environments.

| Performance Measure | Results (in percentages) | | | | | Target 2013 | Evaluation | | | Targets | | |
|--|--------------------------|------|------|------|------|----------------|-------------|-------------|-----------|---------|------|------|
| | 2009 | 2010 | 2011 | 2012 | 2013 | | Achievement | Improvement | Overall | 2014 | 2015 | 2016 |
| Percentage of teacher, parent and student agreement that: students are safe at school, are learning the importance of caring for others, are learning respect for others and are treated fairly in school. | 89.0 | 87.8 | 86.2 | 89.5 | 89.8 | 90 | Very High | Maintained | Excellent | 90 | 90 | 90 |
| Percentage of teachers, parents and students indicating that their school and schools in their jurisdiction have improved or stayed the same the last three years. | 89.0 | 81.1 | 79.0 | 88.0 | 83.5 | 85 | Very High | Maintained | Excellent | 85 | 85 | 85 |

Provincial Achievement Test Results – Measure Details

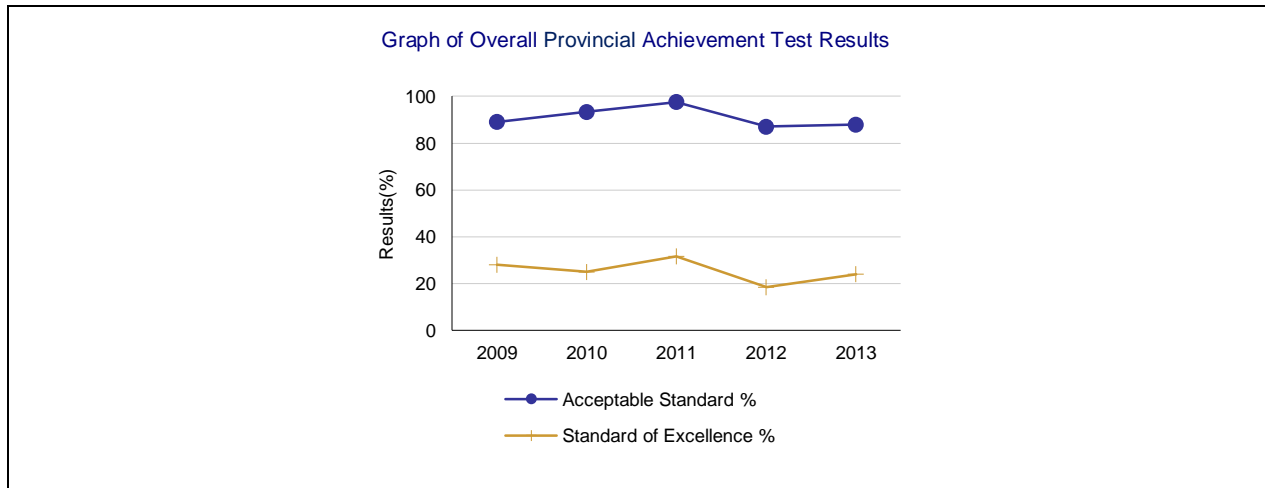
| PAT Course by Course Results by Number Enrolled. | | | | | | | | | | | | | |
|--|-----------|--------------------------|------|-------|------|-------|------|------|------|-------|------|--------|----|
| | | Results (in percentages) | | | | | | | | | | Target | |
| | | 2009 | | 2010 | | 2011 | | 2012 | | 2013 | | 2013 | |
| | | A | E | A | E | A | E | A | E | A | E | A | E |
| English Language Arts 3 | School | 91.7 | 20.8 | 100.0 | 22.2 | 100.0 | 20.0 | 92.9 | 35.7 | 100.0 | 12.5 | 100 | 25 |
| | Authority | 86.4 | 11.2 | 84.2 | 16.9 | 86.2 | 9.8 | 84.9 | 12.6 | 83.3 | 12.6 | | |
| | Province | 81.3 | 18.2 | 81.6 | 19.5 | 81.8 | 17.5 | 81.9 | 20.4 | 81.5 | 17.8 | | |
| Mathematics 3 | School | n/a | n/a | n/a | n/a | 80.0 | 6.7 | 92.9 | 7.1 | 91.7 | 37.5 | 100 | 30 |
| | Authority | n/a | n/a | n/a | n/a | 80.3 | 21.1 | 80.3 | 18.6 | 78.3 | 24.5 | | |
| | Province | n/a | n/a | n/a | n/a | 77.4 | 26.0 | 76.8 | 25.5 | 76.5 | 25.5 | | |
| English Language Arts 6 | School | 90.0 | 35.0 | 95.2 | 28.6 | 92.3 | 38.5 | 90.0 | 10.0 | 76.5 | 23.5 | 100 | 25 |
| | Authority | 88.6 | 17.1 | 83.0 | 13.1 | 83.2 | 9.2 | 85.1 | 9.2 | 86.7 | 11.9 | | |
| | Province | 81.8 | 18.9 | 83.3 | 18.9 | 83.0 | 18.5 | 82.7 | 17.8 | 82.5 | 16.3 | | |

| | | | | | | | | | | | | | |
|------------------|-----------|------|------|------|------|-------|------|------|------|------|------|----|----|
| Mathematics 6 | School | n/a | n/a | n/a | n/a | 100.0 | 38.5 | 80.0 | 10.0 | 70.6 | 29.4 | 90 | 20 |
| | Authority | n/a | n/a | n/a | n/a | 73.3 | 12.3 | 70.7 | 9.2 | 69.5 | 10.0 | | |
| | Province | n/a | n/a | n/a | n/a | 73.7 | 17.8 | 74.7 | 16.6 | 73.0 | 16.4 | | |
| Science 6 | School | 85.0 | 30.0 | 85.7 | 23.8 | 100.0 | 38.5 | 80.0 | 15.0 | 82.4 | 41.2 | 85 | 15 |
| | Authority | 80.4 | 25.9 | 79.4 | 22.5 | 77.4 | 23.4 | 79.9 | 21.3 | 77.0 | 17.7 | | |
| | Province | 76.5 | 24.8 | 76.8 | 26.4 | 76.2 | 25.0 | 77.8 | 28.2 | 77.5 | 25.9 | | |
| Social Studies 6 | School | n/a | n/a | 66.7 | 9.5 | 100.0 | 23.1 | 65.0 | 15.0 | 64.7 | 11.8 | 85 | 15 |
| | Authority | n/a | n/a | 71.3 | 13.1 | 71.5 | 11.0 | 71.8 | 11.5 | 72.6 | 11.4 | | |
| | Province | n/a | n/a | 71.0 | 16.4 | 71.1 | 18.5 | 73.2 | 19.5 | 72.7 | 19.0 | | |

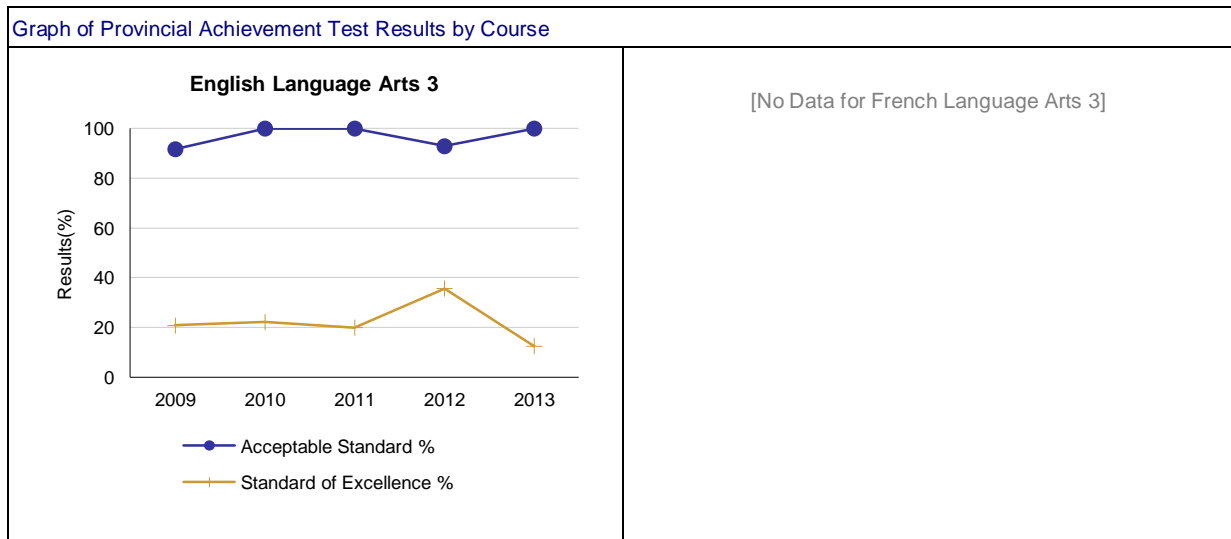
Note: Data values have been suppressed where the number of students or respondents is less than 6. Suppression is marked with an asterisk (*).

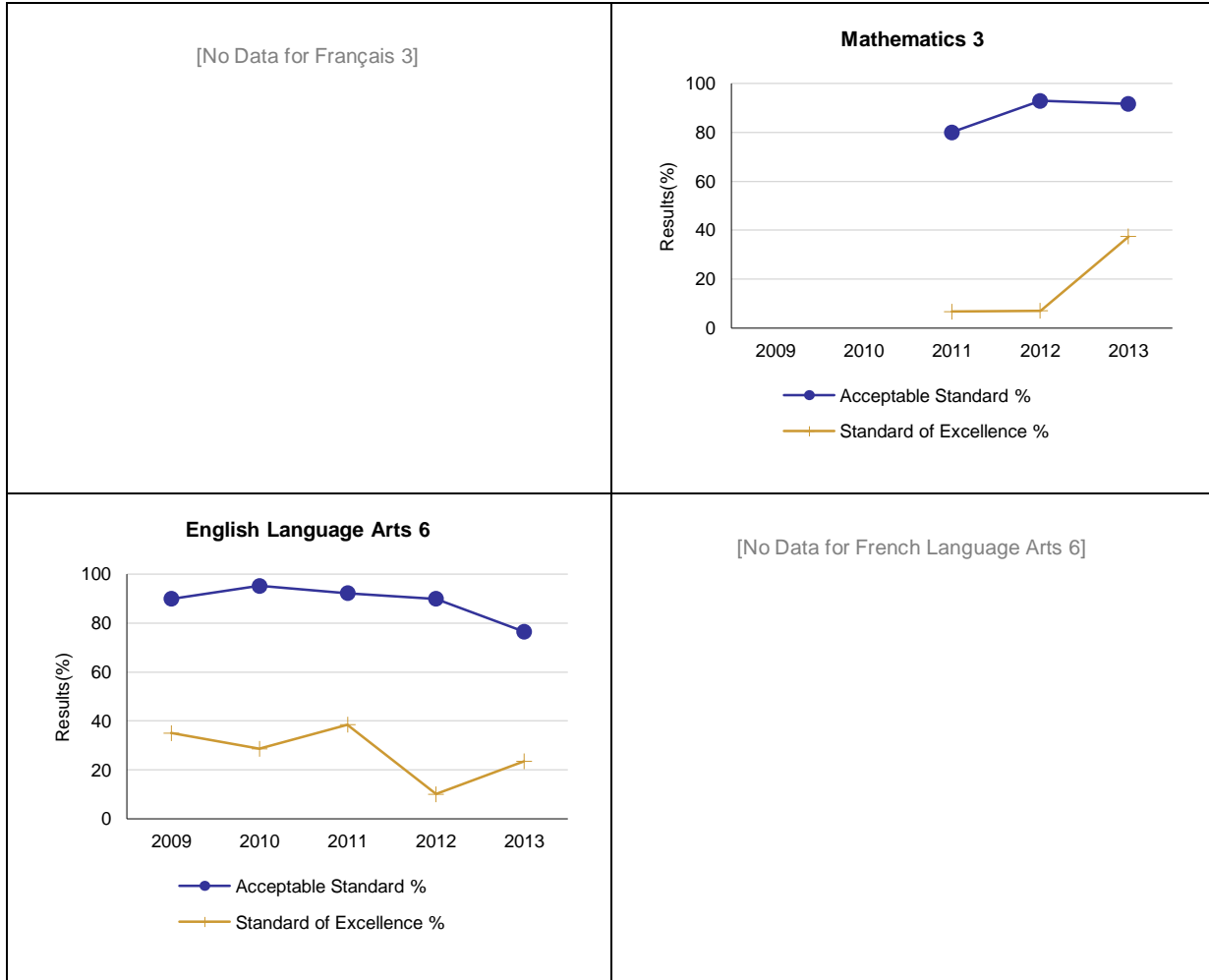
"A" = Acceptable; "E" = Excellence — the percentages achieving the acceptable standard include the percentages achieving the standard of excellence.

Please note that participation in Grade 9 Provincial Achievement Tests was substantially impacted by the flooding in June 2013. Caution should be used when interpreting trends over time for the province and those school authorities affected by the floods.

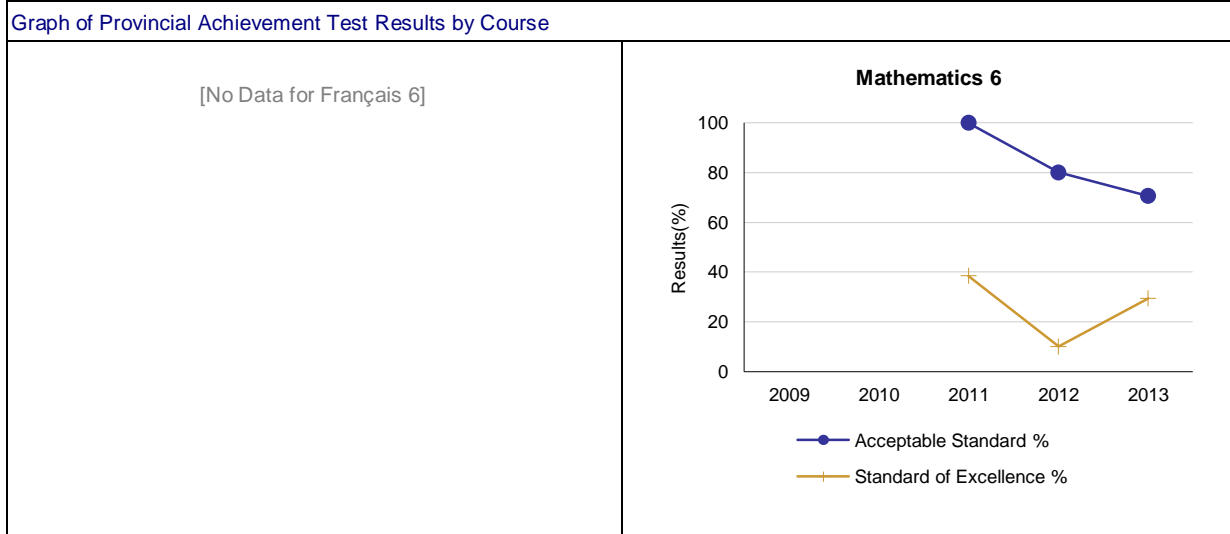


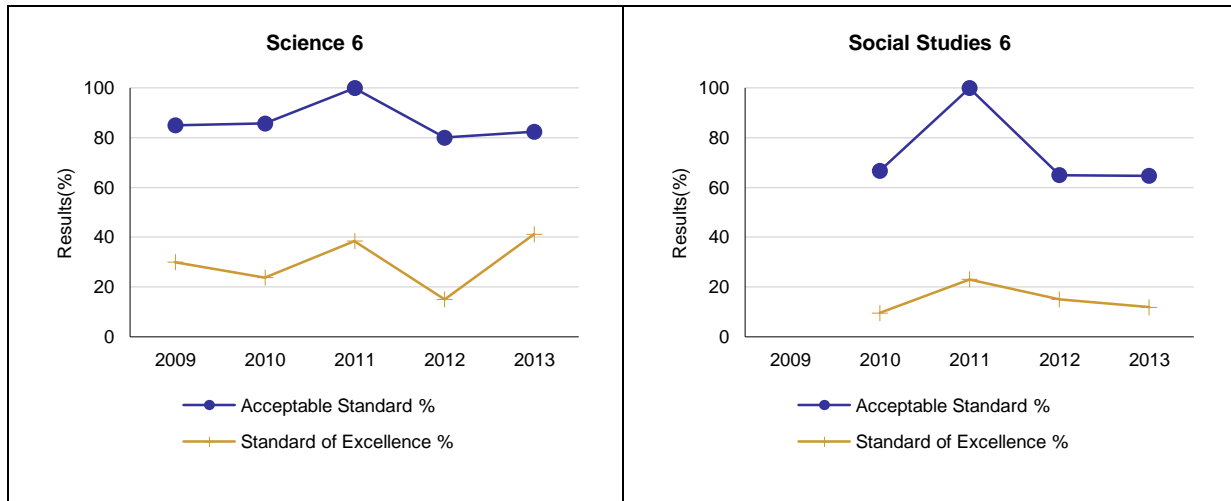
Note: Please note that participation in Grade 9 Provincial Achievement Tests was substantially impacted by the flooding in June 2013. Caution should be used when interpreting trends over time for the province and those school authorities affected by the floods.





Note: Data values have been suppressed where the number of students or respondents is less than 6. Suppression is marked with an asterisk (*).
 Please note that participation in Grade 9 Provincial Achievement Tests was substantially impacted by the flooding in June 2013. Caution should be used when interpreting trends over time for the province and those school authorities affected by the floods.





Note: Data values have been suppressed where the number of students or respondents is less than 6. Suppression is marked with an asterisk (*).

Please note that participation in Grade 9 Provincial Achievement Tests was substantially impacted by the flooding in June 2013. Caution should be used when interpreting trends over time for the province and those school authorities affected by the floods.

PAT Results Course By Course Summary By Enrolled With Measure Evaluation

| Course | Measure | Leslieville Elementary School | | | | | | Alberta | | | | |
|-------------------------|------------------------|-------------------------------|------------------------|------------|------|-------|---------------|---------|--------|------|---------------|------|
| | | Achievement | Improvement | Overall | 2013 | | Prev 3 Yr Avg | | 2013 | | Prev 3 Yr Avg | |
| | | | | | N | % | N | % | N | % | N | % |
| English Language Arts 3 | Acceptable Standard | Very High | Maintained | Excellent | 24 | 100.0 | 16 | 97.6 | 46,095 | 81.5 | 43,231 | 81.8 |
| | Standard of Excellence | Intermediate | Declined | Issue | 24 | 12.5 | 16 | 26.0 | 46,095 | 17.8 | 43,231 | 19.2 |
| Mathematics 3 | Acceptable Standard | n/a | Maintained | n/a | 24 | 91.7 | 15 | 86.4 | 46,041 | 76.5 | 43,823 | 77.1 |
| | Standard of Excellence | n/a | Improved Significantly | n/a | 24 | 37.5 | 15 | 6.9 | 46,041 | 25.5 | 43,823 | 25.8 |
| English Language Arts 6 | Acceptable Standard | Low | Declined | Issue | 17 | 76.5 | 18 | 92.5 | 44,141 | 82.5 | 43,401 | 83.0 |
| | Standard of Excellence | Very High | Maintained | Excellent | 17 | 23.5 | 18 | 25.7 | 44,141 | 16.3 | 43,401 | 18.4 |
| Mathematics 6 | Acceptable Standard | n/a | Declined | n/a | 17 | 70.6 | 17 | 90.0 | 44,089 | 73.0 | 43,355 | 74.2 |
| | Standard of Excellence | n/a | Maintained | n/a | 17 | 29.4 | 17 | 24.2 | 44,089 | 16.4 | 43,355 | 17.2 |
| Science 6 | Acceptable Standard | Intermediate | Maintained | Acceptable | 17 | 82.4 | 18 | 88.6 | 44,138 | 77.5 | 43,341 | 76.9 |
| | Standard of Excellence | Very High | Maintained | Excellent | 17 | 41.2 | 18 | 25.8 | 44,138 | 25.9 | 43,341 | 26.5 |
| Social Studies 6 | Acceptable Standard | Low | Maintained | Issue | 17 | 64.7 | 18 | 77.2 | 43,914 | 72.7 | 43,436 | 71.8 |
| | Standard of Excellence | Low | Maintained | Issue | 17 | 11.8 | 18 | 15.9 | 43,914 | 19.0 | 43,436 | 18.1 |

Note: Data values have been suppressed where the number of students or respondents is less than 6. Suppression is marked with an asterisk (*).

Achievement Evaluation is not calculated for courses that do not have sufficient data available, either due to too few jurisdictions offering the course or because of changes in tests.

Please note that participation in Grade 9 Provincial Achievement Tests was substantially impacted by the flooding in June 2013. Caution should be used when interpreting trends over time for the province and those school authorities affected by the floods.

Measure Evaluation Reference - Achievement Evaluation

Achievement evaluation is based upon a comparison of Current Year data to a set of standards which remain consistent over time. The Standards are calculated by taking the 3 year average of baseline data for each measure across all school jurisdictions and calculating the 5th, 25th, 75th, and 95th percentiles. Once calculated, these standards remain in place from year to year to allow for consistent planning and evaluation.

The table below shows the range of values defining the 5 achievement evaluation levels for each measure.

| Course | Measure | Very Low | Low | Intermediate | High | Very High |
|-------------------------|------------------------|--------------|---------------|---------------|---------------|----------------|
| English Language Arts 3 | Acceptable Standard | 0.00 - 72.53 | 72.53 - 80.49 | 80.49 - 89.12 | 89.12 - 93.04 | 93.04 - 100.00 |
| | Standard of Excellence | 0.00 - 6.06 | 6.06 - 11.35 | 11.35 - 16.93 | 16.93 - 20.27 | 20.27 - 100.00 |
| French Language Arts 3 | Acceptable Standard | 0.00 - 60.68 | 60.68 - 77.74 | 77.74 - 88.22 | 88.22 - 94.87 | 94.87 - 100.00 |

| | | | | | | |
|-------------------------|------------------------|--------------|---------------|---------------|---------------|----------------|
| | Standard of Excellence | 0.00 - 3.31 | 3.31 - 8.38 | 8.38 - 17.31 | 17.31 - 25.31 | 25.31 - 100.00 |
| English Language Arts 6 | Acceptable Standard | 0.00 - 67.95 | 67.95 - 78.40 | 78.40 - 86.09 | 86.09 - 91.37 | 91.37 - 100.00 |
| | Standard of Excellence | 0.00 - 6.83 | 6.83 - 11.65 | 11.65 - 17.36 | 17.36 - 22.46 | 22.46 - 100.00 |
| French Language Arts 6 | Acceptable Standard | 0.00 - 41.69 | 41.69 - 73.54 | 73.54 - 92.32 | 92.32 - 97.93 | 97.93 - 100.00 |
| | Standard of Excellence | 0.00 - 2.72 | 2.72 - 8.13 | 8.13 - 15.29 | 15.29 - 23.86 | 23.86 - 100.00 |
| Science 6 | Acceptable Standard | 0.00 - 60.36 | 60.36 - 78.51 | 78.51 - 86.46 | 86.46 - 90.64 | 90.64 - 100.00 |
| | Standard of Excellence | 0.00 - 11.74 | 11.74 - 17.42 | 17.42 - 25.34 | 25.34 - 34.31 | 34.31 - 100.00 |
| Social Studies 6 | Acceptable Standard | 0.00 - 58.97 | 58.97 - 68.15 | 68.15 - 76.62 | 76.62 - 83.55 | 83.55 - 100.00 |
| | Standard of Excellence | 0.00 - 7.30 | 7.30 - 12.45 | 12.45 - 19.08 | 19.08 - 30.09 | 30.09 - 100.00 |
| English Language Arts 9 | Acceptable Standard | 0.00 - 63.55 | 63.55 - 75.66 | 75.66 - 83.70 | 83.70 - 90.27 | 90.27 - 100.00 |
| | Standard of Excellence | 0.00 - 5.96 | 5.96 - 9.43 | 9.43 - 14.72 | 14.72 - 20.46 | 20.46 - 100.00 |
| English Lang Arts 9 KAE | Acceptable Standard | 0.00 - 29.97 | 29.97 - 53.86 | 53.86 - 76.19 | 76.19 - 91.85 | 91.85 - 100.00 |
| | Standard of Excellence | 0.00 - 0.00 | 0.00 - 0.30 | 0.30 - 10.00 | 10.00 - 20.31 | 20.31 - 100.00 |
| French Language Arts 9 | Acceptable Standard | 0.00 - 67.59 | 67.59 - 81.33 | 81.33 - 92.06 | 92.06 - 97.26 | 97.26 - 100.00 |
| | Standard of Excellence | 0.00 - 1.67 | 1.67 - 6.81 | 6.81 - 17.11 | 17.11 - 28.68 | 28.68 - 100.00 |
| Mathematics 9 KAE | Acceptable Standard | 0.00 - 28.14 | 28.14 - 53.85 | 53.85 - 75.83 | 75.83 - 94.44 | 94.44 - 100.00 |
| | Standard of Excellence | 0.00 - 0.00 | 0.00 - 6.07 | 6.07 - 20.43 | 20.43 - 31.67 | 31.67 - 100.00 |
| Science 9 | Acceptable Standard | 0.00 - 50.57 | 50.57 - 60.14 | 60.14 - 72.50 | 72.50 - 76.89 | 76.89 - 100.00 |
| | Standard of Excellence | 0.00 - 3.39 | 3.39 - 6.71 | 6.71 - 11.81 | 11.81 - 15.85 | 15.85 - 100.00 |
| Science 9 KAE | Acceptable Standard | 0.00 - 38.75 | 38.75 - 59.30 | 59.30 - 78.33 | 78.33 - 87.58 | 87.58 - 100.00 |
| | Standard of Excellence | 0.00 - 0.00 | 0.00 - 7.47 | 7.47 - 21.41 | 21.41 - 40.82 | 40.82 - 100.00 |
| Social Studies 9 | Acceptable Standard | 0.00 - 56.26 | 56.26 - 62.27 | 62.27 - 74.04 | 74.04 - 79.85 | 79.85 - 100.00 |
| | Standard of Excellence | 0.00 - 10.03 | 10.03 - 12.78 | 12.78 - 19.76 | 19.76 - 24.03 | 24.03 - 100.00 |
| Social Studies 9 KAE | Acceptable Standard | 0.00 - 38.79 | 38.79 - 53.82 | 53.82 - 72.42 | 72.42 - 84.88 | 84.88 - 100.00 |
| | Standard of Excellence | 0.00 - 0.00 | 0.00 - 5.71 | 5.71 - 17.19 | 17.19 - 36.26 | 36.26 - 100.00 |

Notes:

The range of values at each evaluation level is interpreted as greater than or equal to the lower value, and less than the higher value. For the Very High evaluation level, values range from greater than or equal to the lower value to 100%.

Achievement Evaluation is not calculated for courses that do not have sufficient data available, either due to too few jurisdictions offering the course or because of changes in tests.

Improvement Table

For each jurisdiction, improvement evaluation consists of comparing the Current Year result for each measure with the previous three-year average. A chi-square statistical test is used to determine the significance of the improvement. This test takes into account the size of the jurisdiction in the calculation to make improvement evaluation fair across jurisdictions of different sizes.

The table below shows the definition of the 5 improvement evaluation levels based upon the chi-square result.

| Evaluation Category | Chi-Square Range |
|------------------------|---|
| Declined Significantly | 3.84 + (current < previous 3-year average) |
| Declined | 1.00 - 3.83 (current < previous 3-year average) |
| Maintained | less than 1.00 |
| Improved | 1.00 - 3.83 (current > previous 3-year average) |
| Improved Significantly | 3.84 + (current > previous 3-year average) |

Overall Evaluation Table

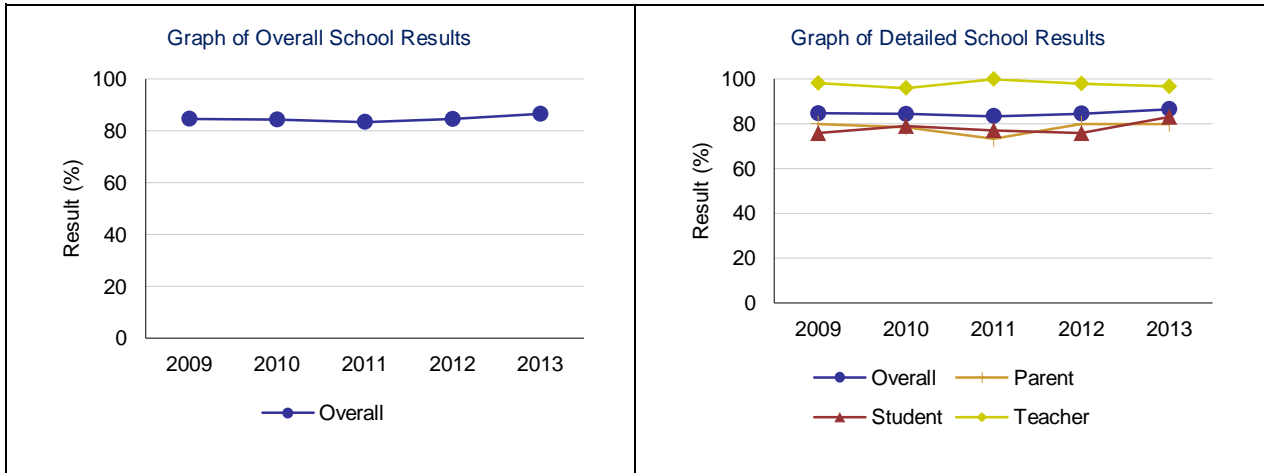
The overall evaluation combines the Achievement Evaluation and the Improvement Evaluation. The table below illustrates how the Achievement and Improvement evaluations are combined to get the overall evaluation.

| | Achievement | | | | |
|------------------------|-------------|------------|--------------|------------|------------|
| | Very High | High | Intermediate | Low | Very Low |
| Improved Significantly | Excellent | Good | Good | Good | Acceptable |
| Improved | Excellent | Good | Good | Acceptable | Issue |
| Maintained | Excellent | Good | Acceptable | Issue | Concern |
| Declined | Good | Acceptable | Issue | Issue | Concern |
| Declined Significantly | Acceptable | Issue | Issue | Concern | Concern |

Citizenship – Measure Details

Percentage of teachers, parents and students who are satisfied that students model the characteristics of active citizenship.

| | School | | | | | Authority | | | | | Province | | | | |
|---------|--------|------|-------|------|------|-----------|------|------|------|------|----------|------|------|------|------|
| | 2009 | 2010 | 2011 | 2012 | 2013 | 2009 | 2010 | 2011 | 2012 | 2013 | 2009 | 2010 | 2011 | 2012 | 2013 |
| Overall | 84.7 | 84.4 | 83.5 | 84.6 | 86.6 | 75.1 | 75.1 | 73.8 | 73.8 | 73.0 | 80.3 | 81.4 | 81.9 | 82.5 | 83.4 |
| Teacher | 98.2 | 96.0 | 100.0 | 98.0 | 96.7 | 88.6 | 91.4 | 87.2 | 86.6 | 83.3 | 91.8 | 93.0 | 92.7 | 93.1 | 93.6 |
| Parent | 80.0 | 78.4 | 73.3 | 80.0 | 80.0 | 66.6 | 68.4 | 69.0 | 69.2 | 70.1 | 77.4 | 78.5 | 78.6 | 79.4 | 80.3 |
| Student | 75.8 | 79.0 | 77.1 | 75.8 | 83.1 | 70.0 | 65.4 | 65.4 | 65.7 | 65.8 | 71.8 | 72.7 | 74.5 | 75.0 | 76.2 |

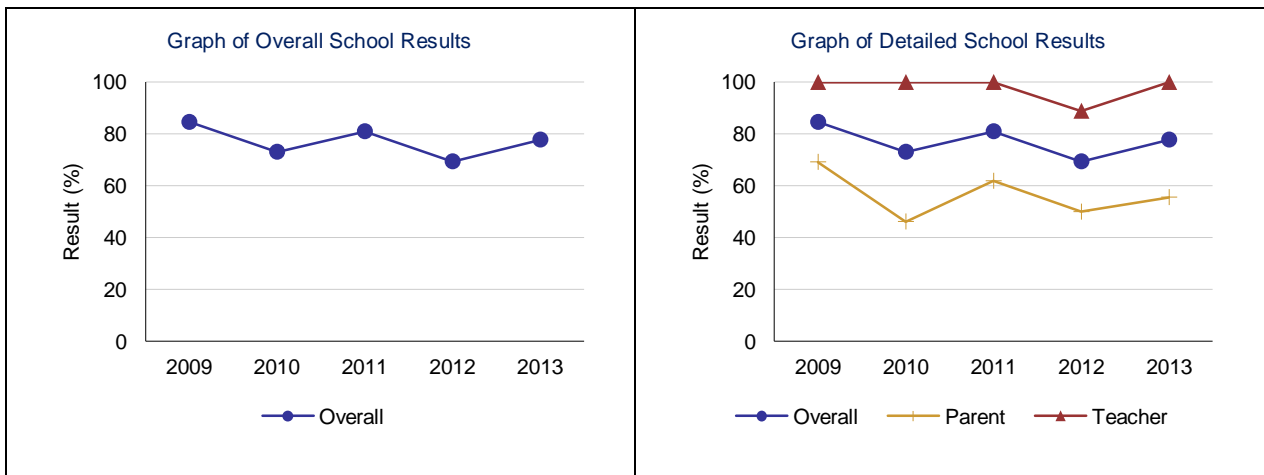


Note: Data values have been suppressed where the number of students or respondents is less than 6. Suppression is marked with an asterisk (*).

Work Preparation – Measure Details

Percentage of teachers and parents who agree that students are taught attitudes and behaviours that will make them successful at work when they finish school.

| | School | | | | | Authority | | | | | Province | | | | |
|---------|--------|-------|-------|------|-------|-----------|------|------|------|------|----------|------|------|------|------|
| | 2009 | 2010 | 2011 | 2012 | 2013 | 2009 | 2010 | 2011 | 2012 | 2013 | 2009 | 2010 | 2011 | 2012 | 2013 |
| Overall | 84.6 | 73.1 | 81.0 | 69.4 | 77.8 | 76.2 | 72.9 | 73.8 | 69.3 | 69.7 | 79.6 | 79.9 | 80.1 | 79.7 | 80.3 |
| Teacher | 100.0 | 100.0 | 100.0 | 88.9 | 100.0 | 91.0 | 90.0 | 82.2 | 84.0 | 80.5 | 88.9 | 90.0 | 89.6 | 89.5 | 89.4 |
| Parent | 69.2 | 46.2 | 61.9 | 50.0 | 55.6 | 61.5 | 55.9 | 65.5 | 54.6 | 59.0 | 70.2 | 69.8 | 70.6 | 69.9 | 71.1 |

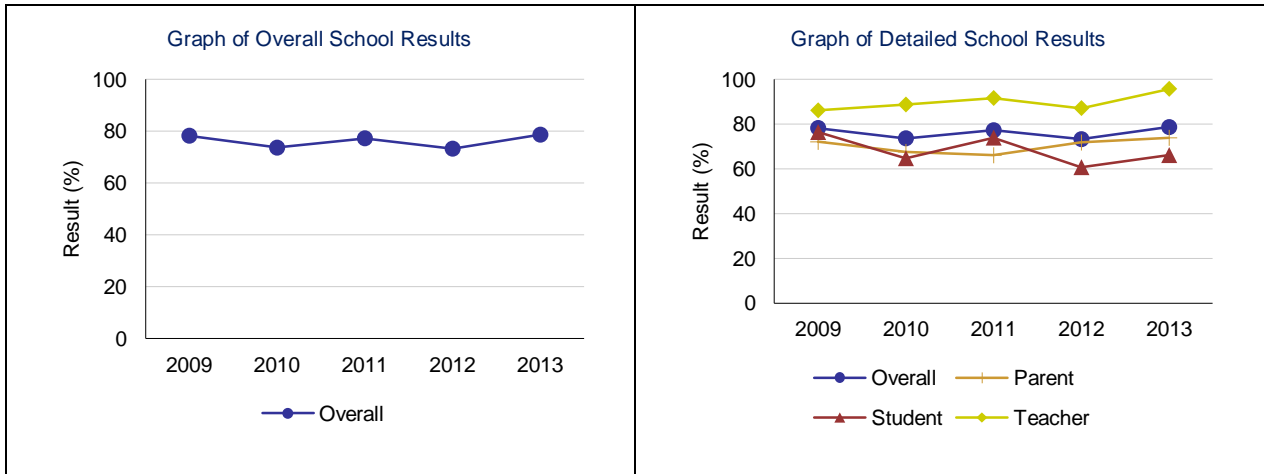


Note: Data values have been suppressed where the number of students or respondents is less than 6. Suppression is marked with an asterisk (*).

Program of Studies – Measure Details

Percentage of teachers, parents and students satisfied with the opportunity for students to receive a broad program of studies including fine arts, career, technology, and health and physical education.

| | School | | | | | Authority | | | | | Province | | | | |
|---------|--------|------|------|------|------|-----------|------|------|------|------|----------|------|------|------|------|
| | 2009 | 2010 | 2011 | 2012 | 2013 | 2009 | 2010 | 2011 | 2012 | 2013 | 2009 | 2010 | 2011 | 2012 | 2013 |
| Overall | 78.3 | 73.7 | 77.3 | 73.3 | 78.7 | 74.5 | 71.9 | 75.2 | 71.9 | 72.9 | 80.3 | 80.5 | 80.9 | 80.7 | 81.5 |
| Teacher | 86.2 | 88.8 | 91.7 | 87.2 | 95.8 | 80.9 | 79.0 | 82.0 | 79.9 | 80.9 | 86.8 | 87.7 | 87.6 | 87.3 | 87.9 |
| Parent | 72.1 | 67.6 | 66.1 | 71.8 | 73.9 | 69.9 | 69.6 | 72.8 | 69.5 | 71.3 | 78.7 | 78.0 | 78.3 | 78.1 | 78.9 |
| Student | 76.5 | 64.8 | 74.0 | 60.8 | 66.2 | 72.8 | 67.1 | 70.8 | 66.1 | 66.4 | 75.3 | 75.9 | 76.9 | 76.9 | 77.8 |

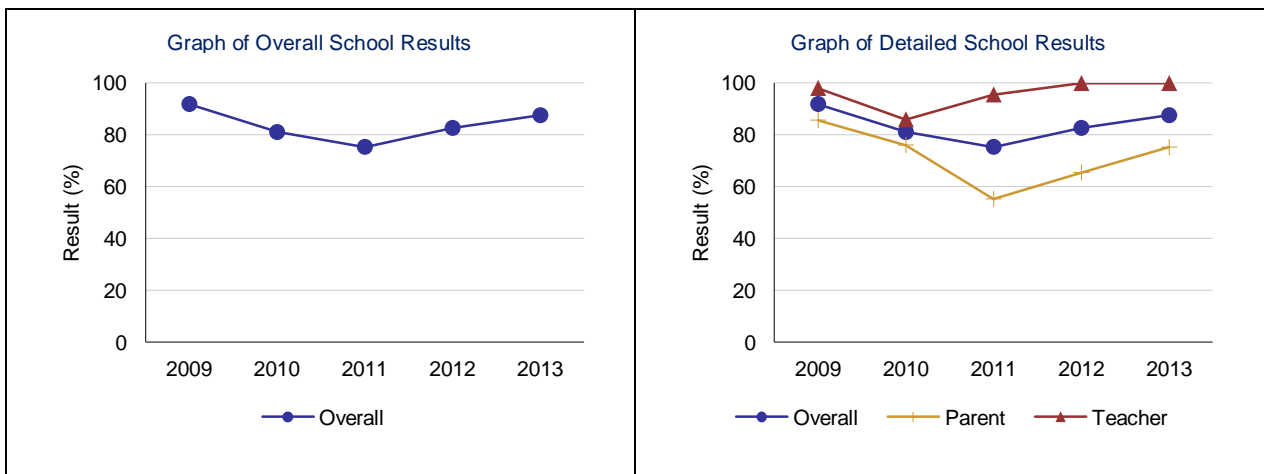


Note: Data values have been suppressed where the number of students or respondents is less than 6. Suppression is marked with an asterisk (*).

Parental Involvement – Measure Details

Percentage of teachers and parents satisfied with parental involvement in decisions about their child's education.

| | School | | | | | Authority | | | | | Province | | | | |
|---------|--------|------|------|-------|-------|-----------|------|------|------|------|----------|------|------|------|------|
| | 2009 | 2010 | 2011 | 2012 | 2013 | 2009 | 2010 | 2011 | 2012 | 2013 | 2009 | 2010 | 2011 | 2012 | 2013 |
| Overall | 91.9 | 81.1 | 75.4 | 82.7 | 87.6 | 79.4 | 76.8 | 74.8 | 73.9 | 76.0 | 80.1 | 80.0 | 79.9 | 79.7 | 80.3 |
| Teacher | 98.1 | 86.0 | 95.6 | 100.0 | 100.0 | 90.0 | 88.6 | 86.3 | 85.5 | 85.0 | 88.0 | 88.6 | 88.1 | 88.0 | 88.5 |
| Parent | 85.7 | 76.1 | 55.3 | 65.5 | 75.3 | 68.8 | 65.0 | 63.2 | 62.3 | 66.9 | 72.2 | 71.3 | 71.7 | 71.4 | 72.2 |

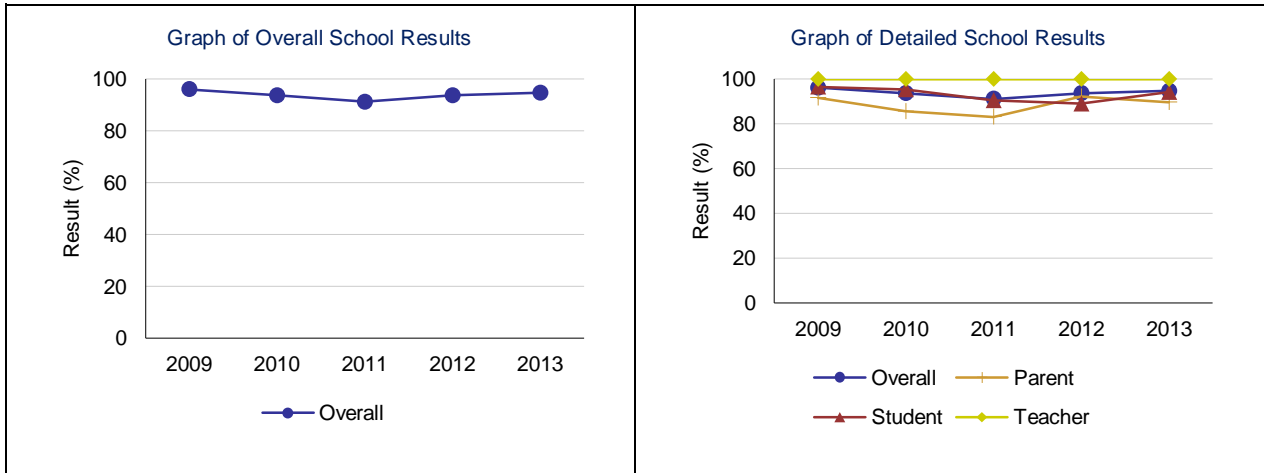


Note: Data values have been suppressed where the number of students or respondents is less than 6. Suppression is marked with an asterisk (*).

Education Quality – Measure Details

Percentage of teachers, parents and students satisfied with the overall quality of basic education.

| | School | | | | | Authority | | | | | Province | | | | |
|---------|--------|-------|-------|-------|-------|-----------|------|------|------|------|----------|------|------|------|------|
| | 2009 | 2010 | 2011 | 2012 | 2013 | 2009 | 2010 | 2011 | 2012 | 2013 | 2009 | 2010 | 2011 | 2012 | 2013 |
| Overall | 96.1 | 93.7 | 91.2 | 93.7 | 94.7 | 87.4 | 86.2 | 85.1 | 84.9 | 83.4 | 89.3 | 89.2 | 89.4 | 89.4 | 89.8 |
| Teacher | 100.0 | 100.0 | 100.0 | 100.0 | 100.0 | 94.8 | 95.1 | 93.7 | 93.2 | 90.9 | 95.3 | 95.6 | 95.5 | 95.4 | 95.7 |
| Parent | 91.7 | 85.6 | 83.2 | 92.2 | 89.7 | 78.7 | 78.9 | 78.5 | 77.7 | 77.5 | 84.4 | 83.9 | 84.2 | 84.2 | 84.9 |
| Student | 96.6 | 95.4 | 90.5 | 89.0 | 94.2 | 88.9 | 84.5 | 83.0 | 83.8 | 81.8 | 88.3 | 88.2 | 88.5 | 88.6 | 88.7 |

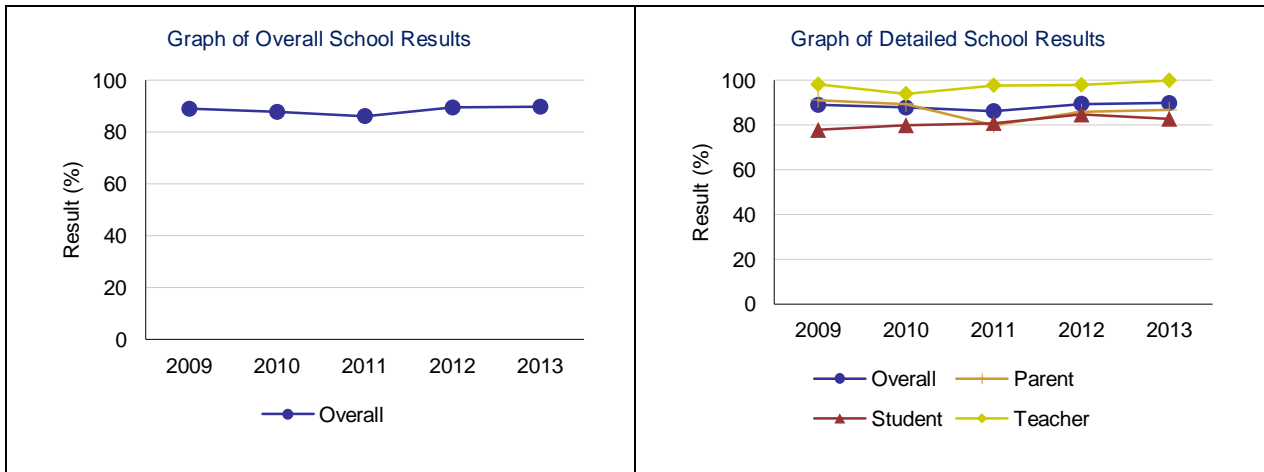


Note: Data values have been suppressed where the number of students or respondents is less than 6. Suppression is marked with an asterisk (*).

Safe and Caring – Measure Details

Percentage of teacher, parent and student agreement that: students are safe at school, are learning the importance of caring for others, are learning respect for others and are treated fairly in school.

| | School | | | | | Authority | | | | | Province | | | | |
|---------|--------|------|------|------|-------|-----------|------|------|------|------|----------|------|------|------|------|
| | 2009 | 2010 | 2011 | 2012 | 2013 | 2009 | 2010 | 2011 | 2012 | 2013 | 2009 | 2010 | 2011 | 2012 | 2013 |
| Overall | 89.0 | 87.8 | 86.2 | 89.5 | 89.8 | 83.8 | 83.2 | 83.1 | 82.6 | 82.1 | 86.9 | 87.6 | 88.1 | 88.6 | 89.0 |
| Teacher | 98.2 | 94.0 | 97.8 | 98.0 | 100.0 | 92.9 | 92.1 | 91.5 | 90.4 | 90.0 | 93.8 | 94.4 | 94.5 | 94.8 | 95.0 |
| Parent | 91.2 | 89.5 | 80.0 | 85.9 | 86.7 | 78.2 | 80.6 | 80.2 | 80.4 | 79.8 | 85.3 | 86.1 | 86.6 | 87.4 | 87.8 |
| Student | 77.8 | 79.9 | 80.9 | 84.7 | 82.8 | 80.4 | 76.8 | 77.7 | 77.0 | 76.4 | 81.7 | 82.2 | 83.3 | 83.7 | 84.2 |

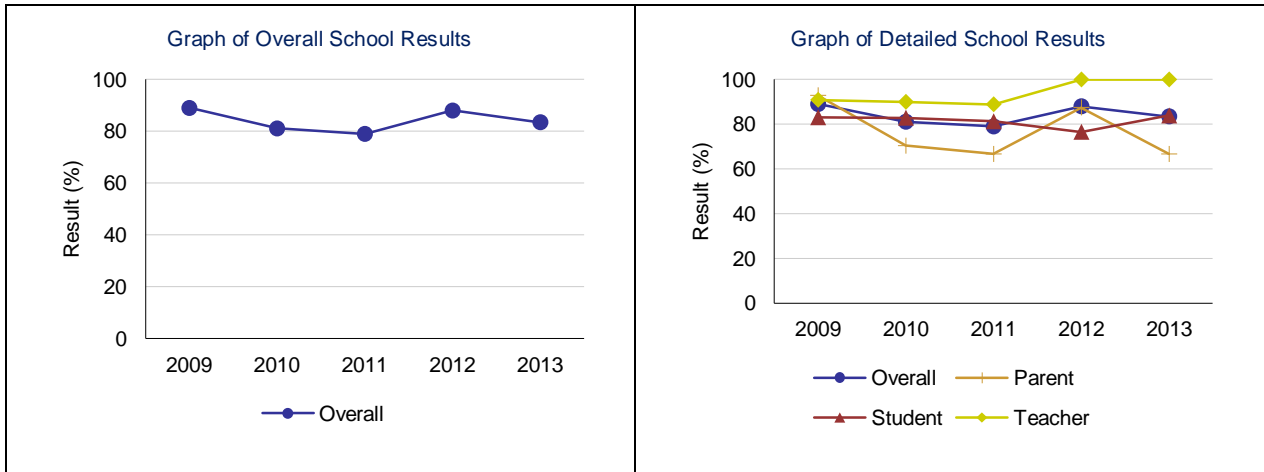


Note: Data values have been suppressed where the number of students or respondents is less than 6. Suppression is marked with an asterisk (*).

School Improvement – Measure Details

Percentage of teachers, parents and students indicating that their school and schools in their jurisdiction have improved or stayed the same the last three years.

| | School | | | | | Authority | | | | | Province | | | | |
|---------|--------|------|------|-------|-------|-----------|------|------|------|------|----------|------|------|------|------|
| | 2009 | 2010 | 2011 | 2012 | 2013 | 2009 | 2010 | 2011 | 2012 | 2013 | 2009 | 2010 | 2011 | 2012 | 2013 |
| Overall | 89.0 | 81.1 | 79.0 | 88.0 | 83.5 | 79.0 | 76.5 | 75.9 | 73.1 | 68.8 | 79.4 | 79.9 | 80.1 | 80.0 | 80.6 |
| Teacher | 90.9 | 90.0 | 88.9 | 100.0 | 100.0 | 83.2 | 77.2 | 76.4 | 77.1 | 68.8 | 78.2 | 80.8 | 80.1 | 81.1 | 80.9 |
| Parent | 92.9 | 70.4 | 66.7 | 87.5 | 66.7 | 71.9 | 74.7 | 73.6 | 68.5 | 69.3 | 78.1 | 77.0 | 77.3 | 76.2 | 77.9 |
| Student | 83.1 | 82.9 | 81.3 | 76.6 | 83.9 | 81.7 | 77.6 | 77.5 | 73.8 | 68.4 | 81.8 | 81.8 | 82.9 | 82.7 | 82.9 |



Note: Data values have been suppressed where the number of students or respondents is less than 6. Suppression is marked with an asterisk (*).